

RoHS

| REV. | EC# | DESCRIPTION | DATE | DRAWING | CHECKED | APPROVED |
|------|-----|-------------|----------|---------|---------|----------|
| A0 | | NEW RELEASE | 04/12'21 | FR | / | MOON |

A

B

C

D

E

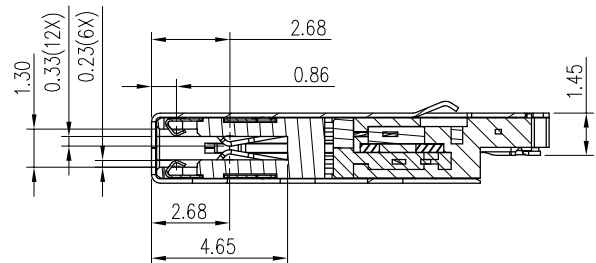
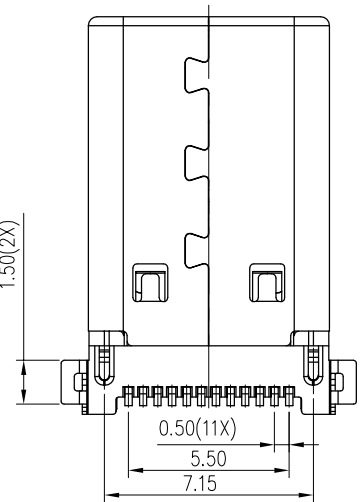
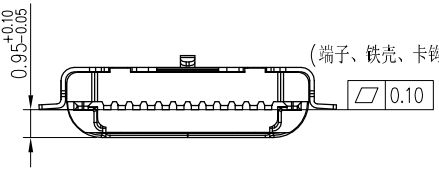
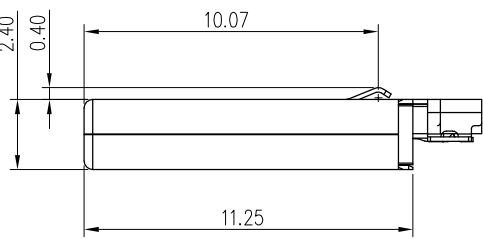
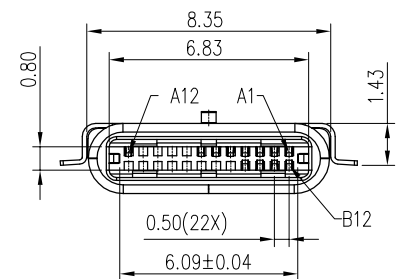
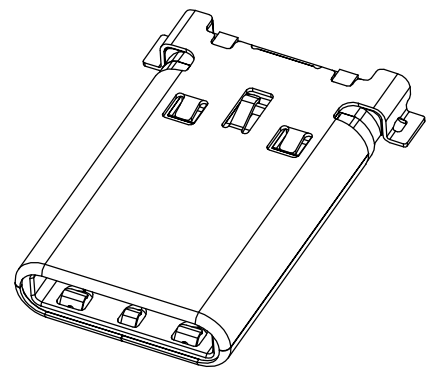
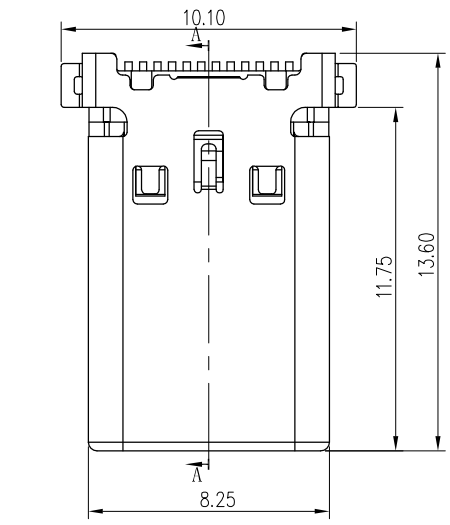
A

B

C

D

E



SECTION:A-A
SCALE 1:1

NOTE:
 1.MATERIAL SPECIFICATION:
 1.HOUSING:HIGH TEMPERATURE RESISTANT PLASTIC,UL94 V-0.
 2.CONTACTS:COPPER ALLOY
 3.MID PLATE: STAINLESS STEEL
 4.FRONT SHELL: STAINLESS STEEL
 5.EMI PLATE: STAINLESS STEEL
 2.PLATING SPECIFICATION:
 2-1.CONTACTS:
 Ni 50u" MIN. UNDER PLATED OVER ALL.
 Au PLATED ON THE FUNCTIONAL AREA OF CONTACT.
 (GOLD PLATING THICKNESS FOLLOW THE P/N)
 80u" MIN TIN PLATED ON SOLDER AREA.
 2-2.FRONT SHELL:
 Ni 30u" MIN. UNDER PLATED OVER ALL.
 2-3.MID PLATE:
 Ni 50u" MIN. UNDER PLATED OVER ALL.
 2-4.EMI PLATE:
 CLEAR ONLY
 3.MECHANICAL PERFORMANCE,
 3-1.INSERTION FORCE: 0.5~2.0kgf.
 3-2.REMOVAL FORCE: 0.8kgf~2.0kgf.
 3-3.DURABILITY: 10000 CYCLES.
 4.ELECTRICAL PERFORMANCE,
 4-1. CURRENT RATING: 5.0A
 VOLTAGE RATING: 5.0V
 4-2. LLCR:
 VBUS & GND PINS AND OTHER PINS: 40mΩ/PIN MAX.
 SHIELD: 50mΩ/MAX.
 LLCR MAX. CHANGE OF ALL PINS: 10mΩ
 4-3.INSULATION RESISTANCE: 100MΩ MIN
 4-4.DIELECTRIC WITHSTAND VOLTAGE,AC 100V FOR 1 MINUTE.
 5. ENVIRONMENTAL PERFORMANCE:
 OPERATING TEMPERATURE: -25°C~+85°C.
 6.IR REFLOW:
 THE PEAK TEMPERATURE ON THE BOARD SHALL
 BE MAINTAINED FOR 10 SECONDS AT 260°C.

| MILLIMETERS | INCH | UNITS | MM |
|-------------|---------------|-----------|----|
| X° ± 2° | X° ± 2° | MAT'L | |
| .X ± 0.38 | .XX ± 0.015 | SEE NOTES | |
| .XX ± 0.25 | .XXX ± 0.010 | FINISH | |
| .XXX ± 0.15 | .XXXX ± 0.006 | SEE NOTES | |
| | | QTY | |
| | | SEE NOTES | |

XBG 东莞市溪榜电子有限公司
 DONG GUAN XI BANG ELECTRONICS CO., LTD.

PART NUMBER: XB-104014412
 TITLE: TYPE CM 12PIN 沉板H0.95mm SMT外壳带弹

APPD: DWG NO.: C-104014412-00

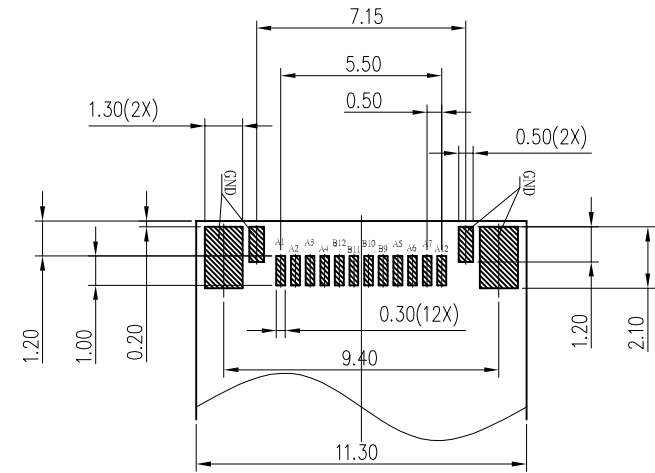
CHKD: SCALE 1:1
 DR: SHEET 1/3
 REV. A0

RoHS

| REV. | EC# | DESCRIPTION | DATE | DRAWING | CHECKED | APPROVED |
|------|-----|-------------|----------|---------|---------|----------|
| A0 | | NEW RELEASE | 04/12'21 | FR | / | MOON |
| | | | | | | |

USB TYPE-C PIN ASSIGNMENTS

| PIN NUMBER | SIGNAL NAME | PIN NUMBER | SIGNAL NAME |
|------------|-------------|------------|-------------|
| A1 | GND | B12 | GND |
| A2 | SSTXp1 | B11 | SSRXp1 |
| A3 | SSTXn1 | B10 | SSRXn1 |
| A4 | Vbus | B9 | VBus |
| A5 | CC1 | B8 | |
| A6 | Dp1 | B7 | |
| A7 | Dn1 | B6 | |
| A8 | | B5 | |
| A9 | | B4 | |
| A10 | | B3 | |
| A11 | | B2 | |
| A12 | GND | B1 | |



RECOMMENDED PCB LAYOUT(TOP VIEW)

TOLERANCE: ±0.05

PART No.:

104014412

USB SERIES
PLATING:
01:G/F+TIN

PAKING:
2: REEL

SERIAL NO.

| MILLIMETERS | INCH | UNITS | MM | 东莞市溪榜电子有限公司 DONG GUAN XI BANG ELECTRONICS CO., LTD. | | |
|-------------|---------------|-----------|----|--|--|---|
| X° ± 2° | X° ± 2° | MAT'L | | PART NUMBER: XB-104014412 | | TITLE: TYPE CM 12PIN 沉板H0.95mm SMT外壳带弹 |
| .X ± 0.38 | .XX ± 0.015 | SEE NOTES | | APPD: | | DWG NO.: |
| .XX ± 0.25 | .XXX ± 0.010 | FINISH | | CHKD: | | C-104014412-00 |
| .XXX ± 0.15 | .XXXX ± 0.006 | SEE NOTES | | DR: | | SCALE SHEET REV. |
| | | QTY | | | | 1:1 2/3 A0 |
| | | SEE NOTES | | | | |

RoHS

1 2 3 4 5

A

B

C

D

E

A

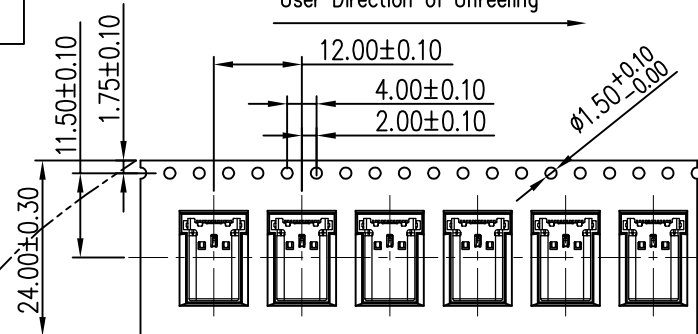
B

C

D

E

User Direction of Unreeling

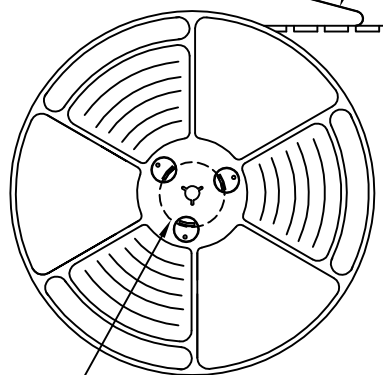


COVER TAPE PEELING ANGLE: $165^{\circ} \sim 180^{\circ}$

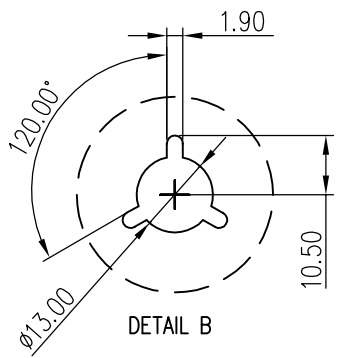
PEELING FORCE: 20~130g

CARRIER TAPE

User Direction of Unreeling

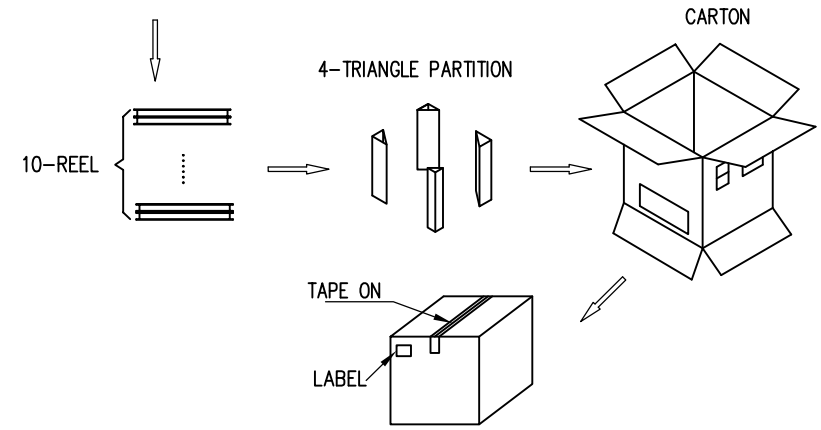


DETAIL B



NOTES

- NUMBER OF CONNECTORS: 1800PCS/REEL
- LEAD TAPE LENGTH
- QUANTITY: 1800PCS/CARTON



| MILLIMETERS | INCH | UNITS | MM | XG 东莞市溪榜电子有限公司 DONG GUAN XI BANG ELECTRONICS CO., LTD. | | | | | | | | |
|---------------------------|---------------------------|-----------|----|---|--|---|-------|-------|------|-----|-----|----|
| $X^{\circ} \pm 2^{\circ}$ | $X^{\circ} \pm 2^{\circ}$ | MAT'L | | PART NUMBER: XB-104014412 | | TITLE: TYPE CM 12PIN 沉板H0.95mm SMT外壳带弹 | | | | | | |
| $.X \pm 0.38$ | $.XX \pm 0.015$ | SEE NOTES | | APPD: | | DWG NO.: C-104014412-00 | | | | | | |
| $.XX \pm 0.25$ | $.XXX \pm 0.010$ | FINISH | | CHKD: | | <table border="1"> <tr> <th>SCALE</th> <th>SHEET</th> <th>REV.</th> </tr> <tr> <td>1:1</td> <td>3/3</td> <td>A0</td> </tr> </table> | SCALE | SHEET | REV. | 1:1 | 3/3 | A0 |
| SCALE | SHEET | REV. | | | | | | | | | | |
| 1:1 | 3/3 | A0 | | | | | | | | | | |
| $.XXX \pm 0.15$ | $.XXXX \pm 0.006$ | SEE NOTES | | DR: | | | | | | | | |
| | | QTY | | | | | | | | | | |
| | | SEE NOTES | | | | | | | | | | |

1 2 3 4 5