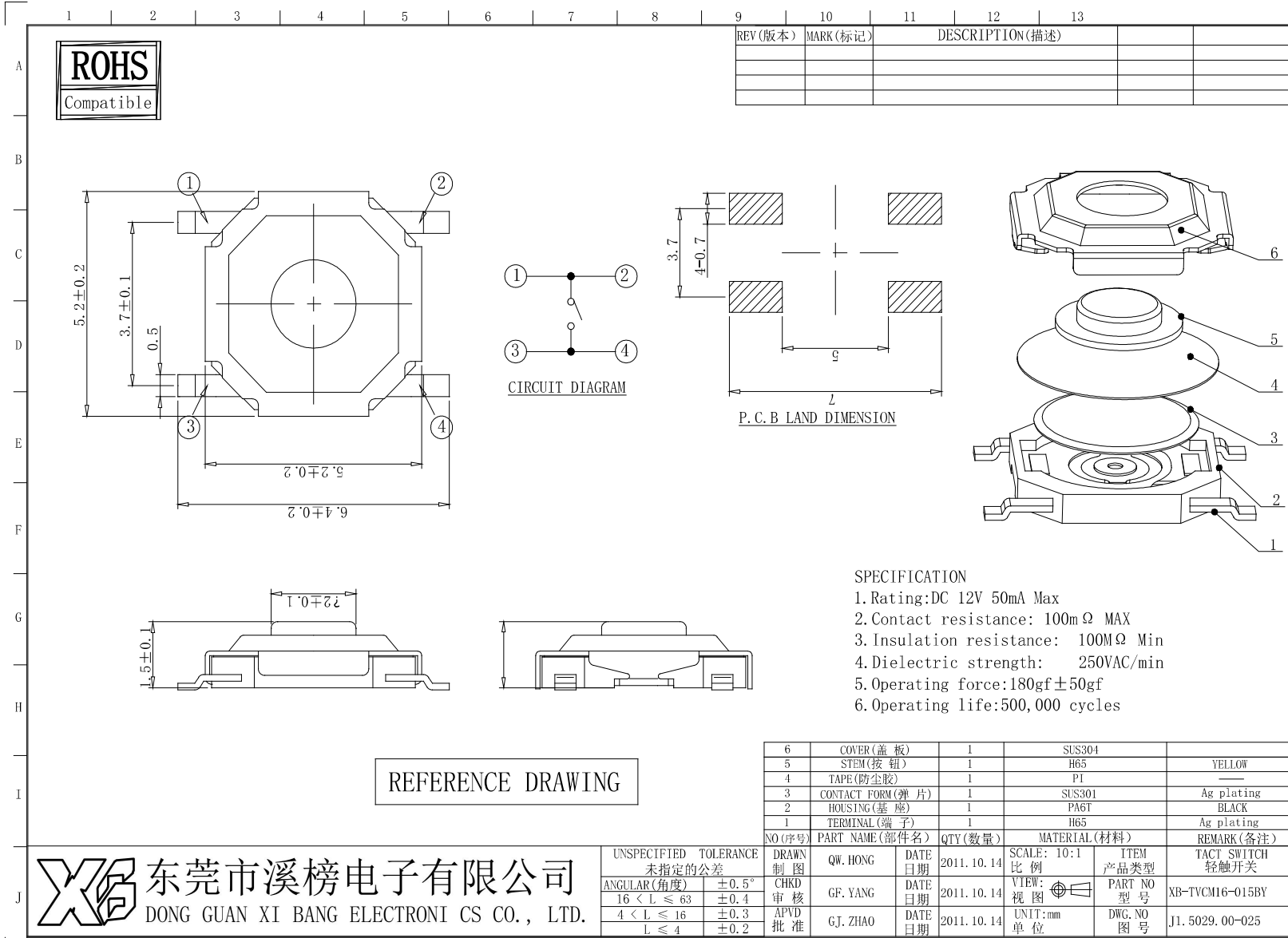
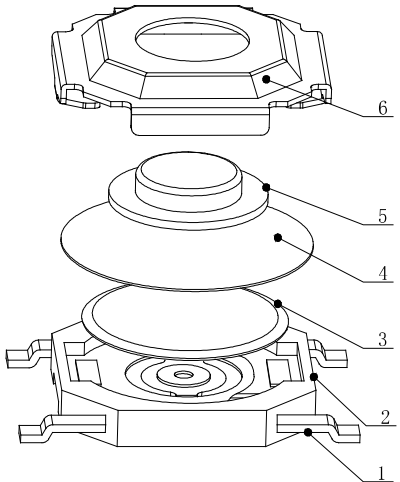
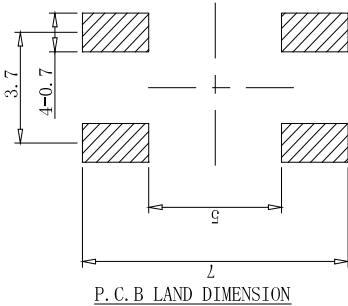
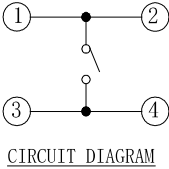


5. 外形、结构:

5.1 外形图:



REV (版本)	MARK (标记)	DESCRIPTION (描述)



- SPECIFICATION
1. Rating: DC 12V 50mA Max
 2. Contact resistance: 100mΩ MAX
 3. Insulation resistance: 100MΩ Min
 4. Dielectric strength: 250VAC/min
 5. Operating force: 180gf ± 50gf
 6. Operating life: 500,000 cycles

REFERENCE DRAWING

NO (序号)	PART NAME (部件名)	QTY (数量)	MATERIAL (材料)	REMARK (备注)
6	COVER (盖板)	1	SUS304	
5	STEM (按钮)	1	H65	YELLOW
4	TAPE (防尘胶)	1	PI	
3	CONTACT FORM (弹片)	1	SUS301	Ag plating
2	HOUSING (底座)	1	PA6T	BLACK
1	TERMINAL (端子)	1	H65	Ag plating

UNSPECIFIED TOLERANCE 未指定的公差	DRAWN 制图	DATE 日期	SCALE: 10:1 比例	ITEM 产品类型	TACT SWITCH 轻触开关
ANGULAR (角度) ±0.5°	QW. HONG	2011. 10. 14	VIEW: 视图	PART NO 型号	XB-TVCM16-015BY
16 < L ≤ 63 ±0.4	CHKD 审核	2011. 10. 14	UNIT: mm 单位	DWG. NO 图号	J1. 5029. 00-025
4 < L ≤ 16 ±0.3	APVD 批准	2011. 10. 14			
L ≤ 4 ±0.2					

XGB 东莞市溪榜电子有限公司
DONG GUAN XI BANG ELECTRONICS CO., LTD.