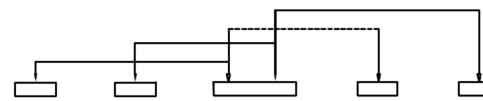
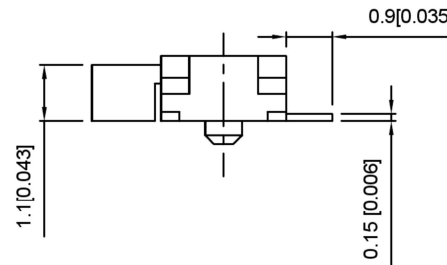
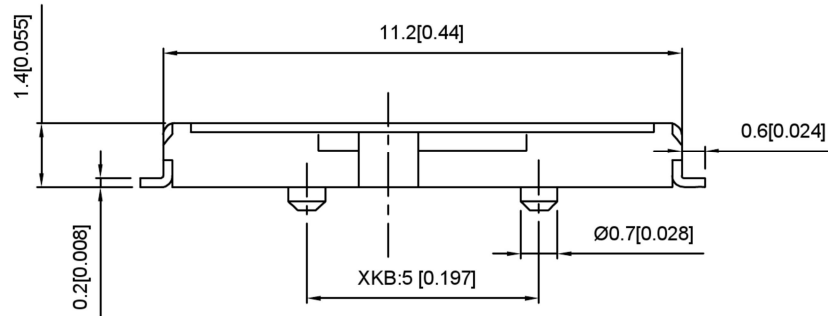


PCB LAYOUT



SCHEMATIC

NOTE:
Rating: DC 12V 50mA
Operating Force: 200±100gf
Lifetime: 10,000 Cycles



PAPT NO	L
SK-1500-L1	1.5
SK-1500-L2	2.0
SK-1500-L3	2.5

5	Terminal	—	6	Brass (0.30t)	ag Plated
4	Contact spring	—	1	Phosphor branze	ag Plated
3	Base	—	1	Lcp	Black
2	Cover	—	1	Sus	Natural
1	Keystake	—	1	Pa46	Black
ITEM	PAPT NAME	TER.NO	QTY	MATERIAL	FINISHING

				ANGLAR	±5°
				L ≤ 4	±0.2
				4 < L ≤ 16	±0.3
				16 < L ≤ 63	±0.4
				L > 63	±0.5
	DATE	REVISED	APPROVED	UNSPECIFIED TOLERANCES	



DSND		SCALE: N/A	MODEL TYPE: SLIDE SWITCH		
DWN		VIEW:	PART NO.: SK-1500-X		
CHKD		UNIT: mm/in	DWG NO.:		
APPD		SIZE: A4	WEIGHT	SHEET	REVISI
				1/1	A0