

■ Specifications :

- Voltage rating: 125V AC / DC
- Current rating: 1A AC / DC
- Withstanding voltage: 250V AC/minute
- Temperature range: -25°C~+85°C
- Insulation resistance: ≥100MΩ
- Contact resistance: ≤20mΩ
- After environmental testing : ≤40mΩ

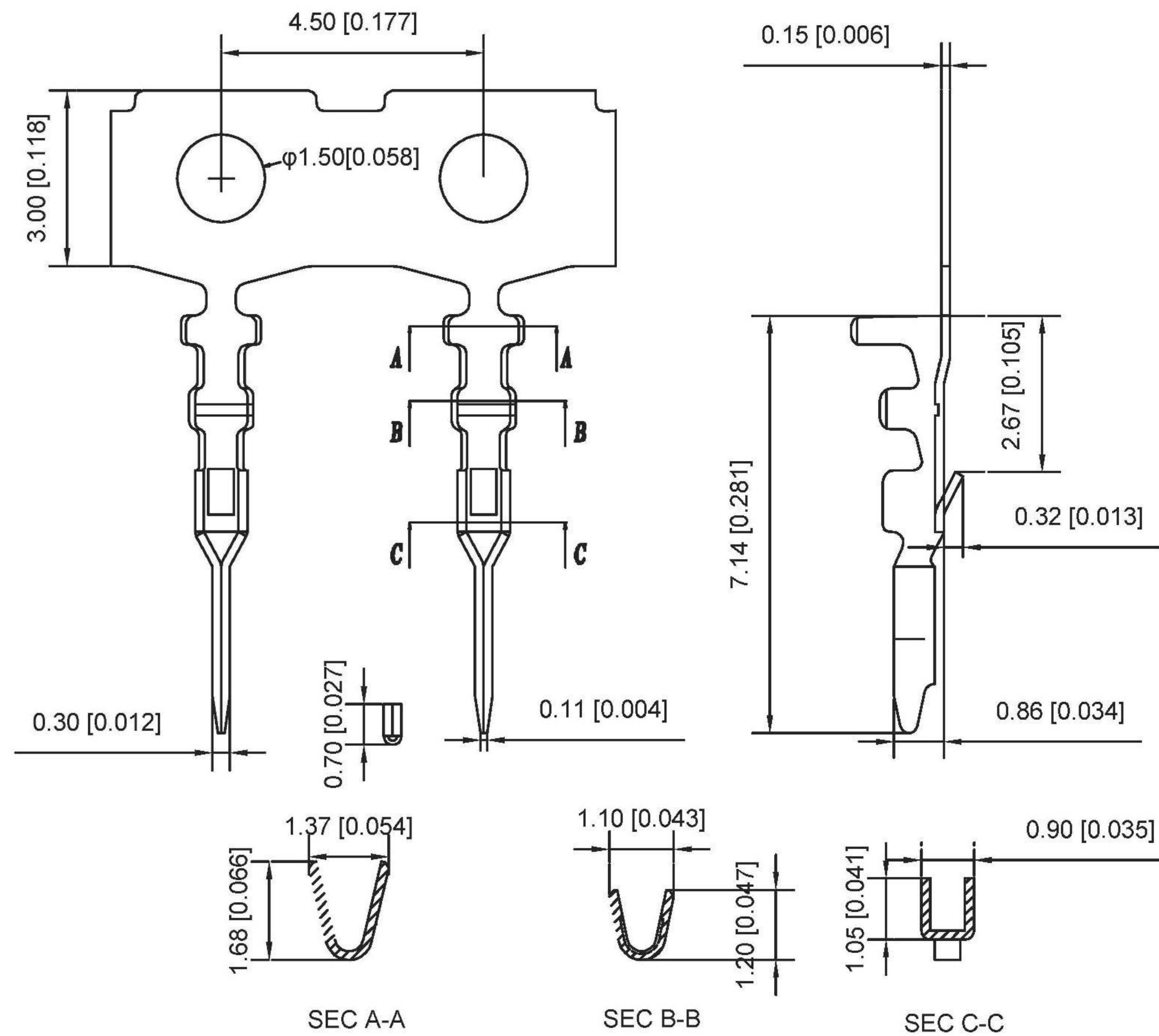
X9821 H F -XX -XX HF
 ① ② ③ ④ ⑤ ⑥

- ① Series No.
- ② Category : H-HSG
- ③ Welding Board Angle : F-Fmale HSG
- ④ Row No.-Pin No.: XX-02P~16P
- ⑤ Material : N0-PA66 94V-0 ;PT-PBT 94V-0
- ⑥ HF-Halogen free

Poles	Dimensions(mm)				Poles	Dimensions(mm)			
	A	B	C	D		A	B	C	D
02	1.25	4.25	3.15	2.95	10	11.25	14.25	13.15	12.95
03	2.50	5.50	4.40	4.20	11	12.50	15.50	14.40	14.20
04	3.75	6.75	5.65	5.45	12	13.75	16.75	15.65	15.45
05	5.00	8.00	6.90	6.70	13	15.00	18.00	16.90	16.70
06	6.25	9.25	8.15	7.95	14	16.25	19.25	18.15	17.95
07	7.50	10.50	9.40	9.20	15	17.50	20.50	19.40	19.20
08	8.75	11.75	10.65	10.45	16	18.75	21.75	20.65	20.45
09	10.00	13.00	11.90	11.70					

X9821HF-XX-PT	PBT UL 94V-0	X9821TM	X9821H		
X9821HF-XX-N0HF	Nylon 66 UL 94V-0 Halogen-Free				
X9821HF-XX-N0	Nylon 66 UL 94V-0				
PART NO	Material	Suitable	Terminal	Suitable	Terminal

REVISIONS				ANGLAR	±5°		DSND	SCALE: N/A	MODEL TYPE:	
				L ≤ 4	±0.2		DWN	VIEW:	BOARD TO BOARD CONNECTOR	
				4 < L ≤ 16	±0.3		CHKD	UNIT: mm/in	PART NO.:	
				16 < L ≤ 63	±0.4		APPD	SIZE: A4	DWG NO.:	
DATE	REVISED	APPROVED		L > 63	±0.5	DONG GUAN XI BANG ELECTRONIC CO., LTD			WEIGHT	
				UNSPECIFIED TOLERANCES						SHEET
www.alpsr.com www.gdxjdz.com www.xbswitch.com										1/1
										REVISION
										A0



■ Specifications :

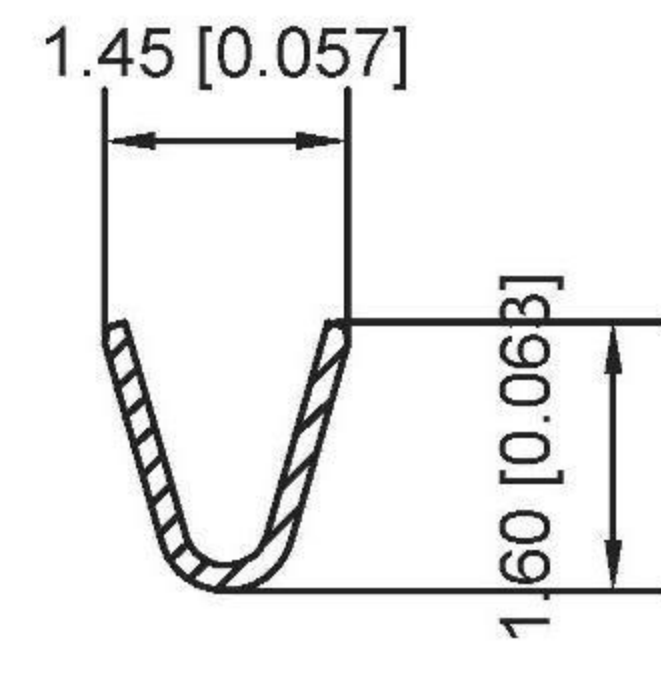
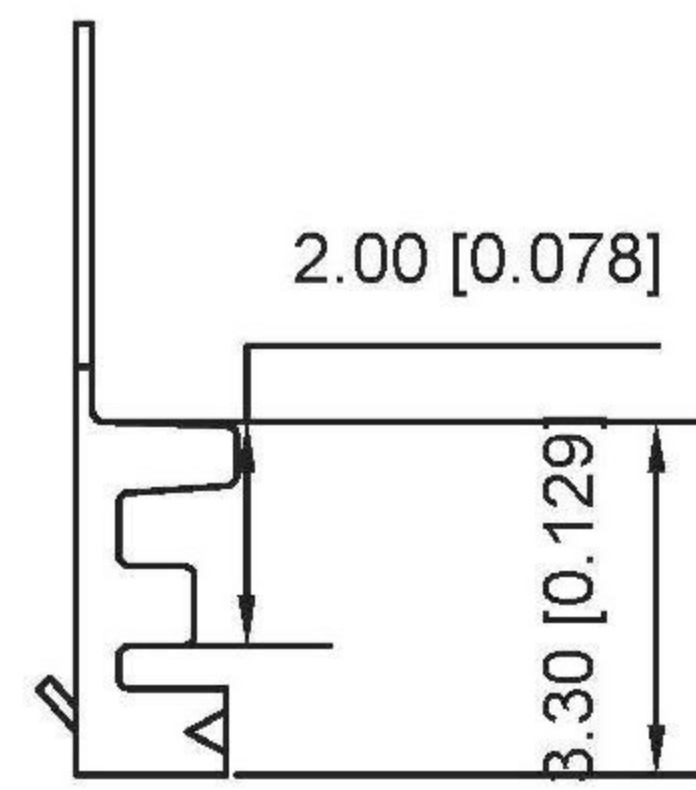
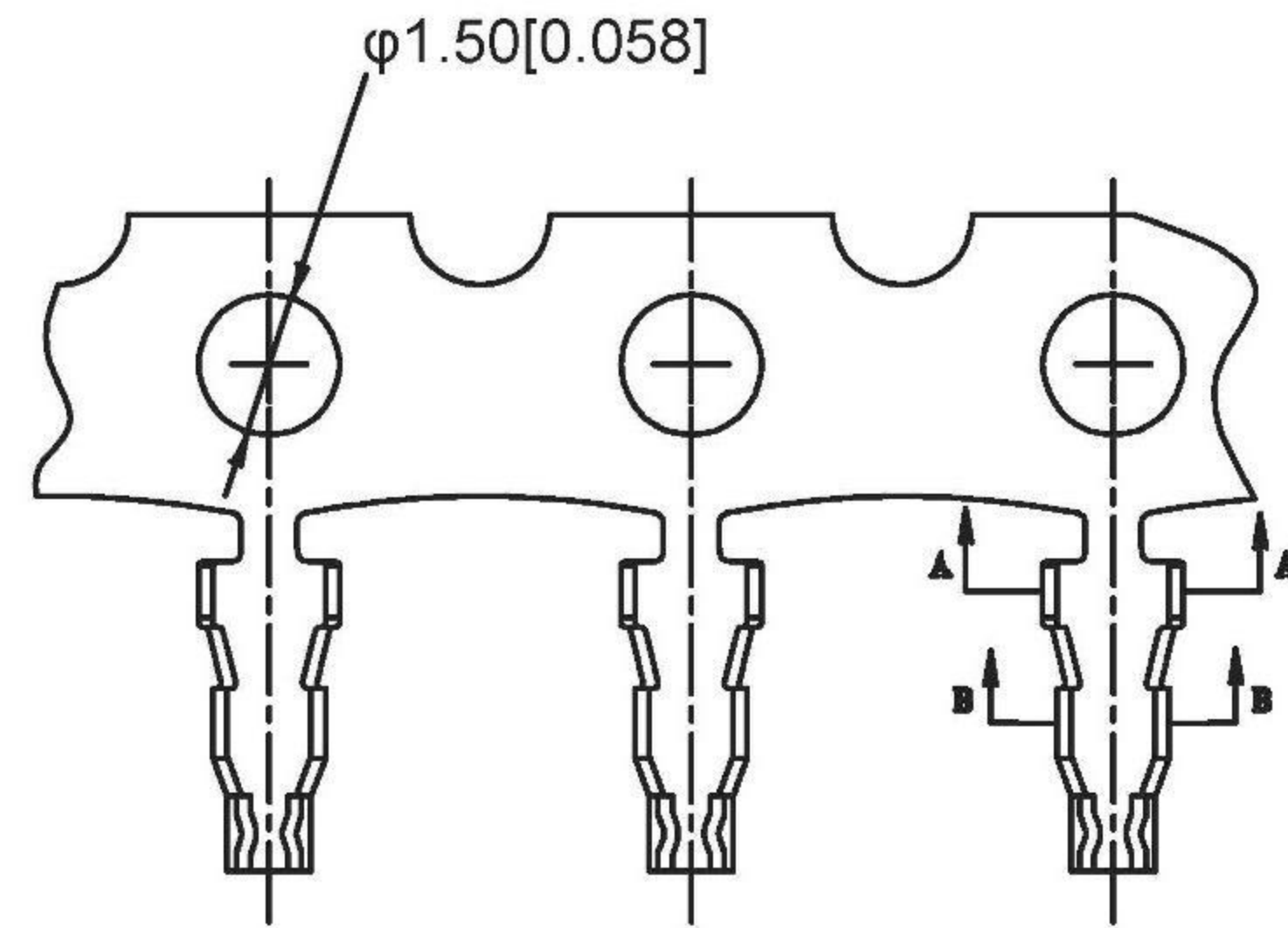
- Voltage rating: 125V AC / DC
- Current rating: 1A AC / DC
- Withstanding voltage: 250V AC/minute
- Temperature range: -25°C~+85°C
- Insulation resistance: $\geq 100M\Omega$
- Contact resistance: $\leq 20m\Omega$
- After environmental testing : $\leq 40m\Omega$

X9821 T M -P -XX
① ② ③ ④ ⑤

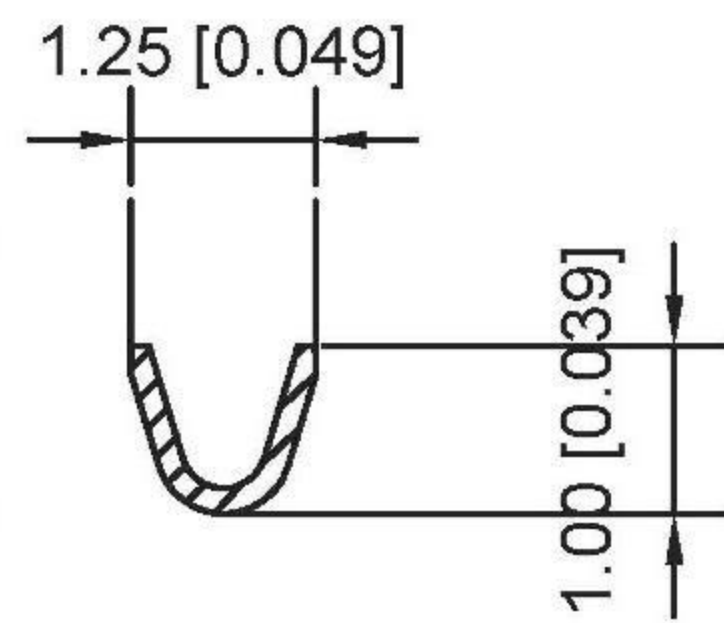
- ① Series Number
- ② Category : T-terminal
- ③ Welding Board Angle : M-Male
- ④ Material:P-Phosphor bronze
- ⑤ Plating style:V01-Gold Flash;SN-Bright tin plating
SN2-Bright Tin Plating 120u"Min

X9821TM-PN2				Stamping Before Plating:50u" Min Ni;120u"Sn Min	
X9821TM-PV01	Phosphor Bronze	AWG#28-32	1.0mm(Max)	Stamping Before Plating:30u" Min Ni;Whole Gold:Gold Flash	X9821HF-PSN
X9821TM-PSN				Stamping Before Plating:30u" Min Ni;70u"Sn Min	
PART NO	Material	Wire Range	Insulation O.D	Finish	Suitable

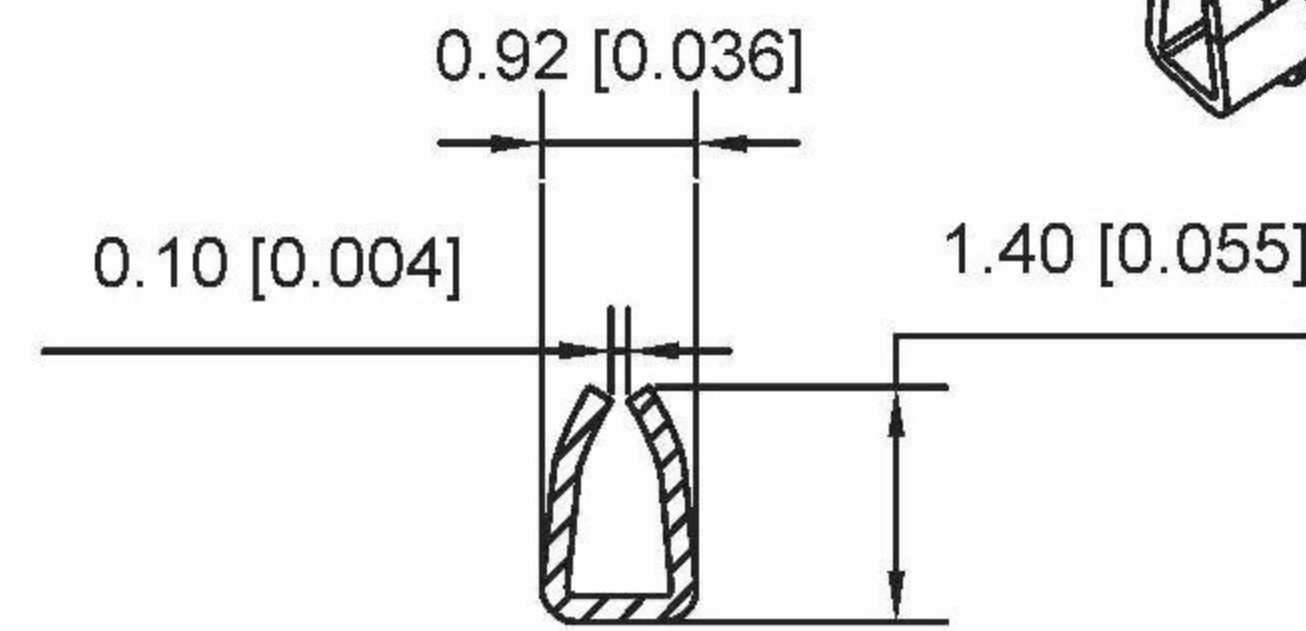
				ANGULAR	$\pm 5^\circ$		DSND		SCALE: N/A	MODEL TYPE: BOARD TO BOARD CONNECTOR		
				$L \leq 4$	± 0.2		DWN		VIEW:	PART NO.:		
				$4 < L \leq 16$	± 0.3		CHKD		UNIT: mm/in	DWG NO.:		
				$16 < L \leq 63$	± 0.4		APPD		SIZE: A4			
				$L > 63$	± 0.5	DONG GUAN XI BANG ELECTRONIC CO., LTD				WEIGHT	SHEET	REVISION
REVISIONS				UNSPECIFIED TOLERANCES							1/1	A0
www.alpsr.com www.gdxjdz.com www.xbswitch.com												



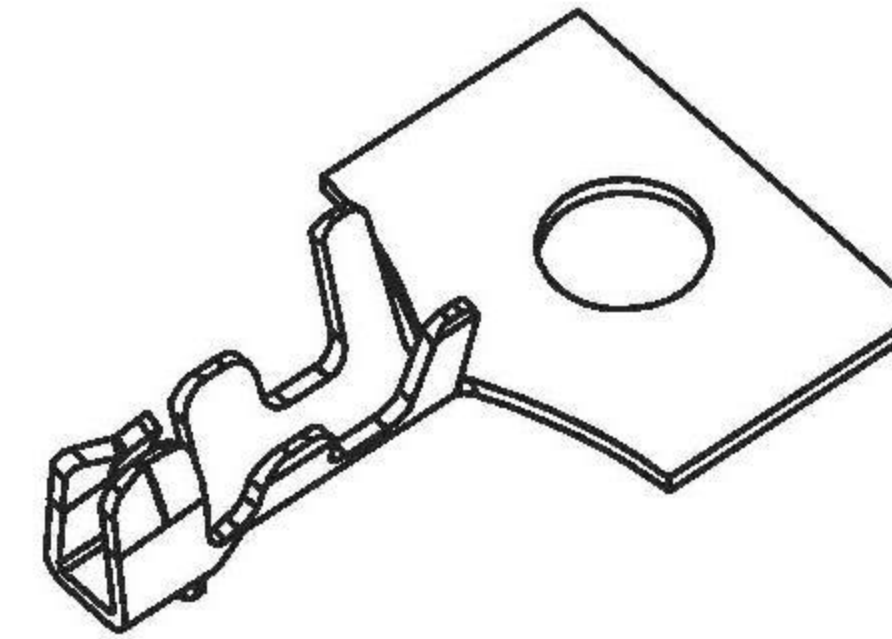
SECTION:A-A
SCALE:1:1



SECTION:B-B
SCALE:1:1



SECTION:C-C
SCALE:1:1



■ Specifications :

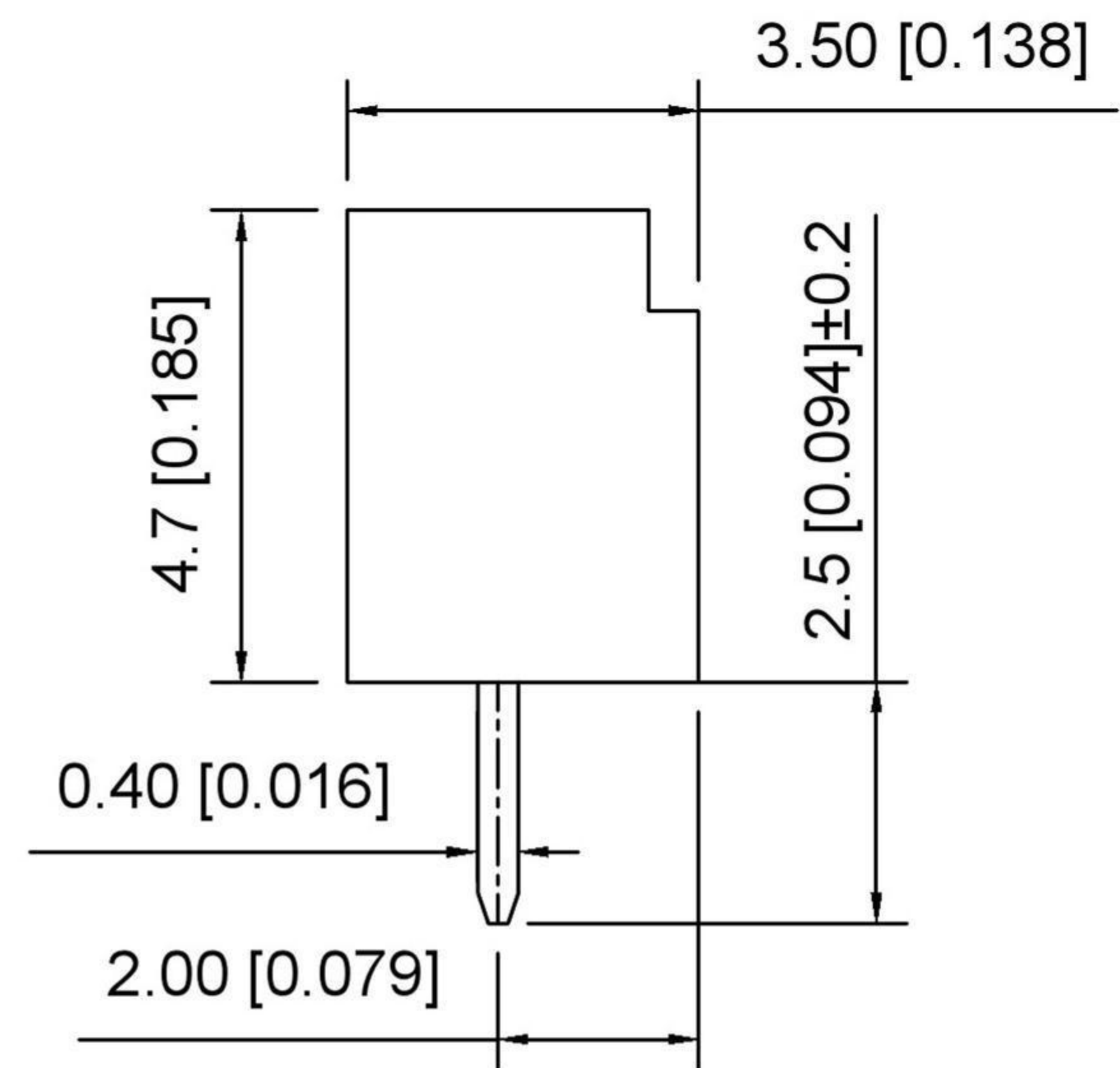
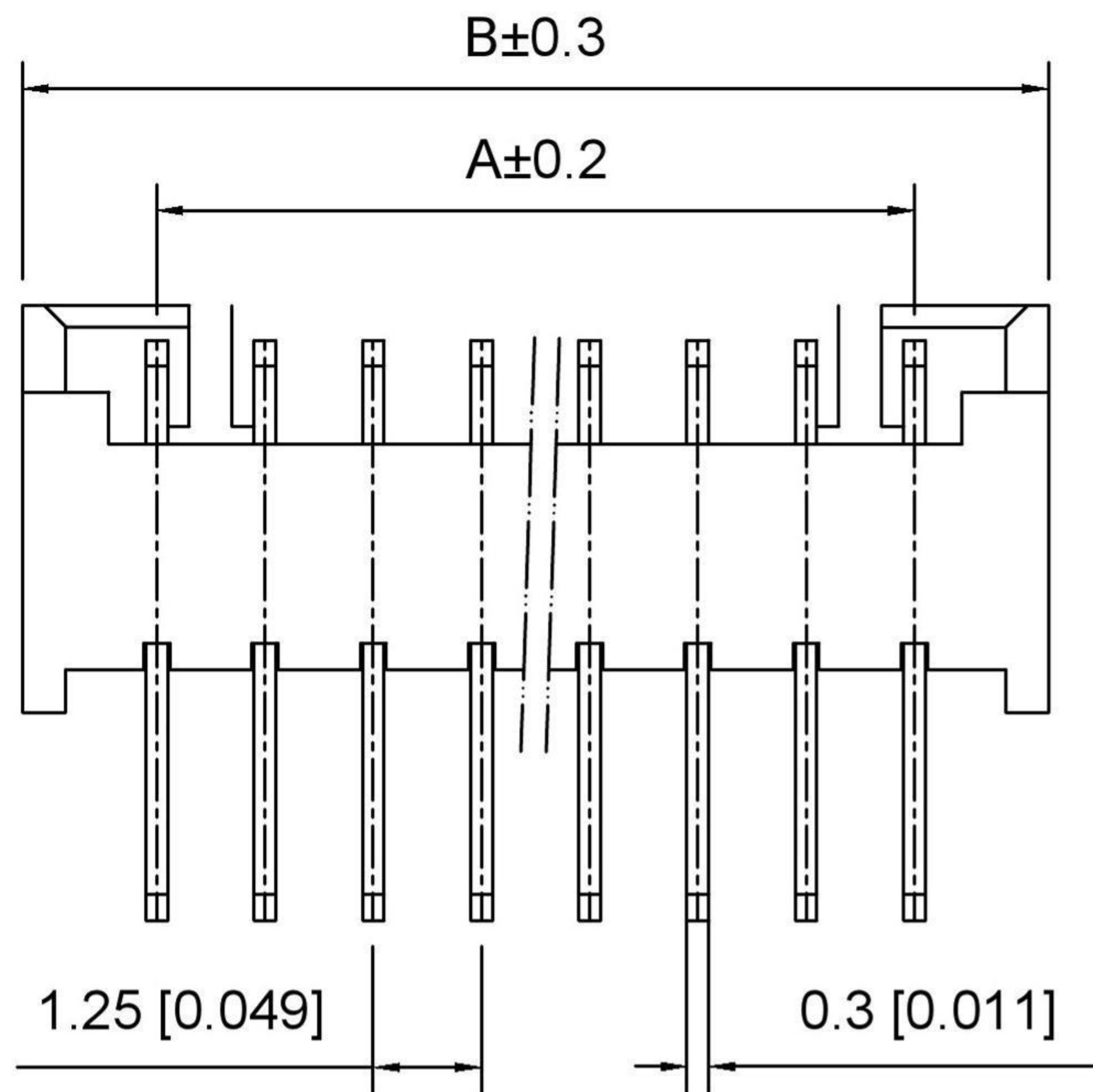
- Voltage rating: 125V AC / DC
- Current rating: 1A AC / DC
- Withstanding voltage: 250V AC/minute
- Temperature range: -25°C~+85°C
- Insulation resistance: ≥100MΩ
- Contact resistance: ≤20mΩ
- After environmental testing : ≤40mΩ

X9821TF-P-XX
① ② ③ ④ ⑤

- ① Series Number
- ② Category : T-terminal
- ③ Welding Board Angle : F-Fmale
- ④ Material:P-Phosphor bronze
- ⑤ Plating style:V01-Gold Flash;SN-Bright tin plating
SN2-Bright Tin Plating 120u"Min

X9821TF-XX-SN2				Stamping Before Plating:50u" Min Ni;120u"Sn Min	
X9821TF-PV01	Phosphor Bronze	AWG#28-32	1.0mm(Max)	Stamping Before Plating:30u" Min Ni;Whole Gold:Gold Flash	X9821HM-PSN
X9821TF-PSN				Stamping Before Plating:30u" Min Ni;70u"Sn Min	
PART NO	Material	Wire Range	Insulation O.D	Finish	Suitable

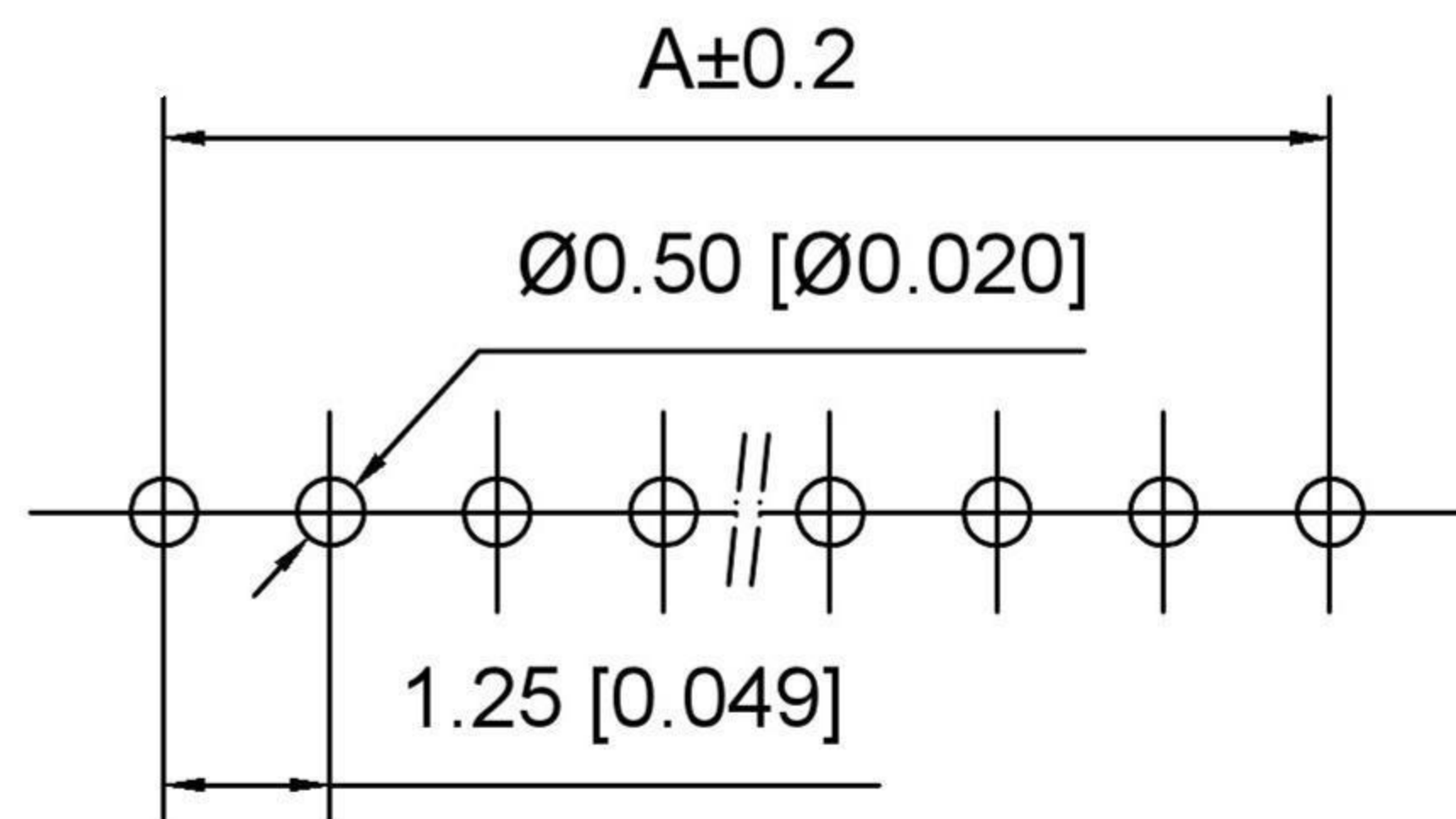
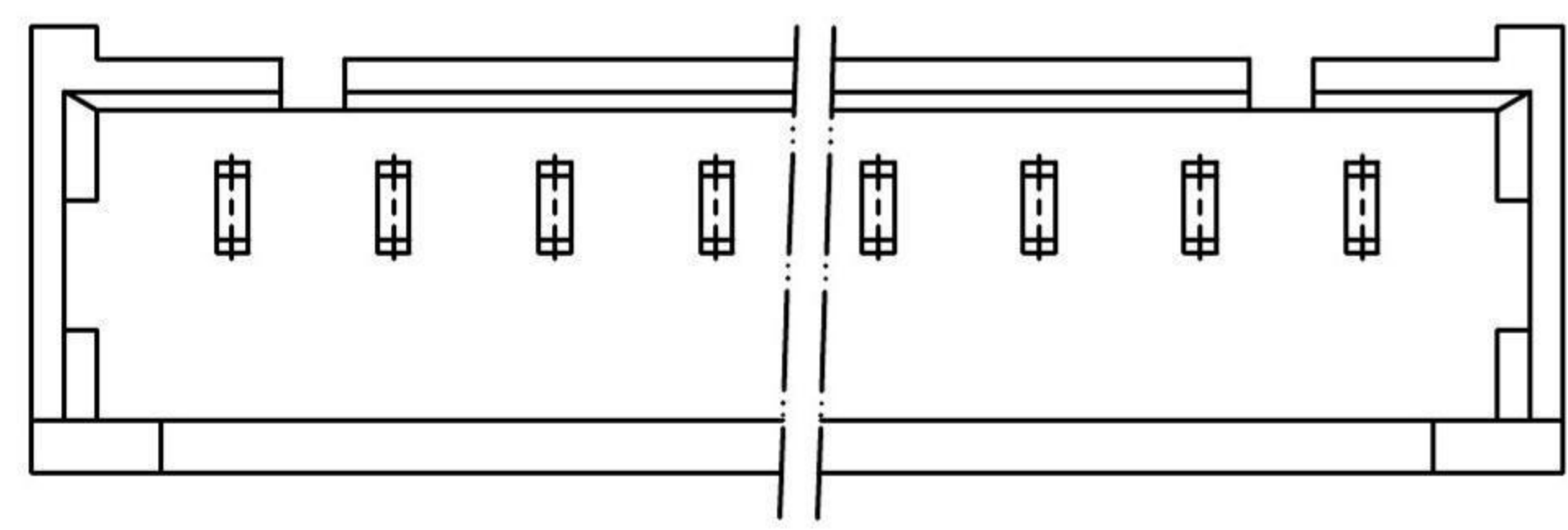
				ANGULAR	±5°		DSND		SCALE: N/A	MODEL TYPE: BOARD TO BOARD CONNECTOR		
				L ≤ 4	±0.2		DWN		VIEW:	PART NO.:		
				4 < L ≤ 16	±0.3		CHKD		UNIT: mm/in	DWG NO.:		
				16 < L ≤ 63	±0.4		APPD		SIZE: A4			
				L > 63	±0.5	DONG GUAN XI BANG ELECTRONIC CO., LTD				WEIGHT	SHEET	REVISION
REVISIONS				UNSPECIFIED TOLERANCES							1/1	A0
www.alpsr.com www.gdxjdz.com www.xbswitch.com												



Specifications:
 规格:
 Voltage rating:125V AC/DC
 额定电压: 125V AC/DC
 Current rating:1A AC/DC
 额定电流: 1A AC/DC
 Withstanding voltage:250V AC/minute
 耐受电压: 250V AC/分钟
 Temperature range:-25℃~+85℃
 温度范围: -25℃~+85℃
 Insulation resistance:100MΩ min
 绝缘电阻: 100MΩ Min
 Contact resistance:20mΩ Max
 接触电阻: 20mΩ Max

X9821 W V - XX - N0 SN
 ① ② ③ ④ ⑤ ⑥



1. Series No
2. Category:W-Wafer
3. Welding Board Angle:V-Straight 180°
4. Row No.Pin No:XX-02~12P
5. Material:N0-PA66 ; 46-PA46 UL94V-0
6. Plating:SN-Tin Plated

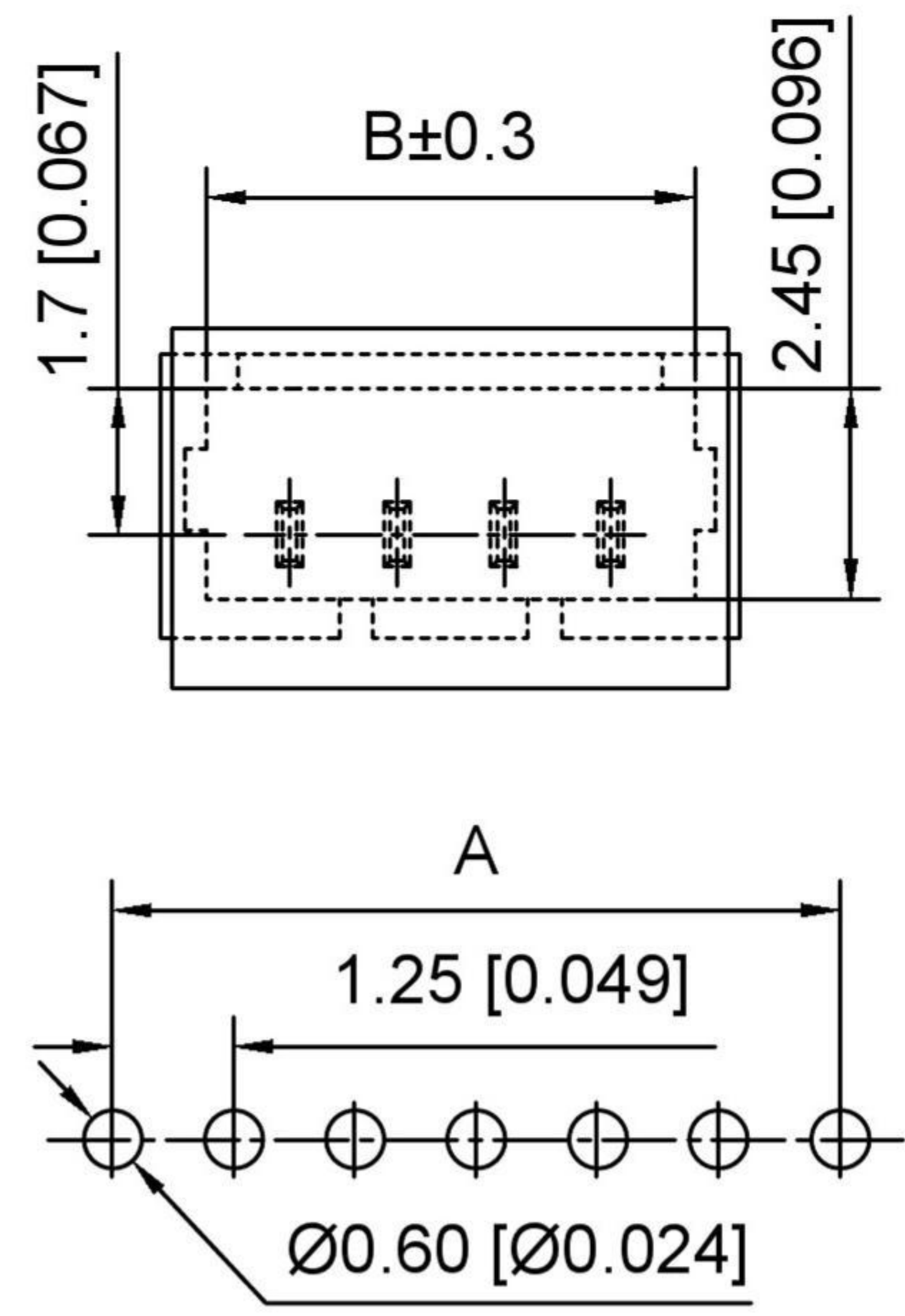
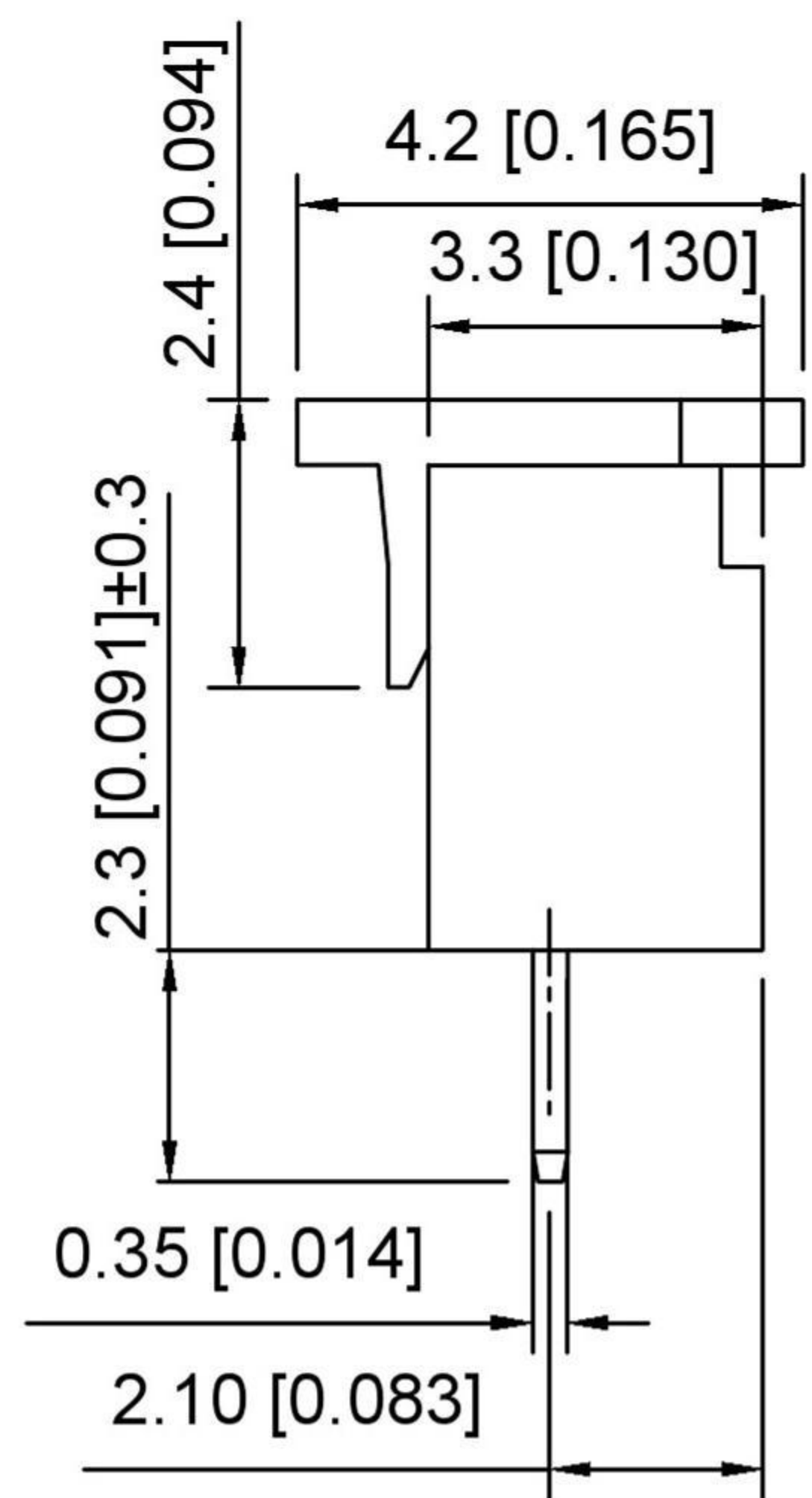
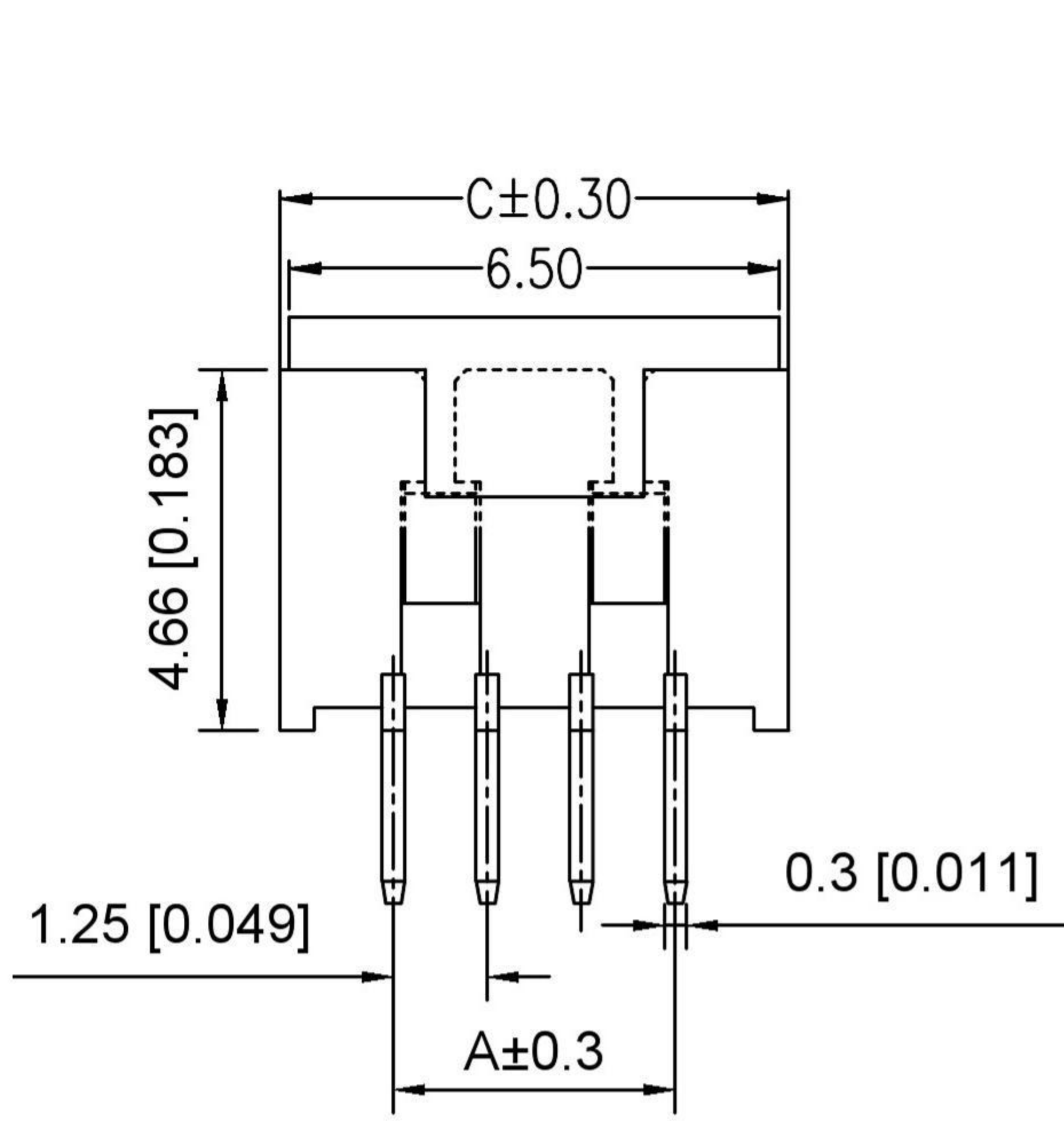


PCB Layout

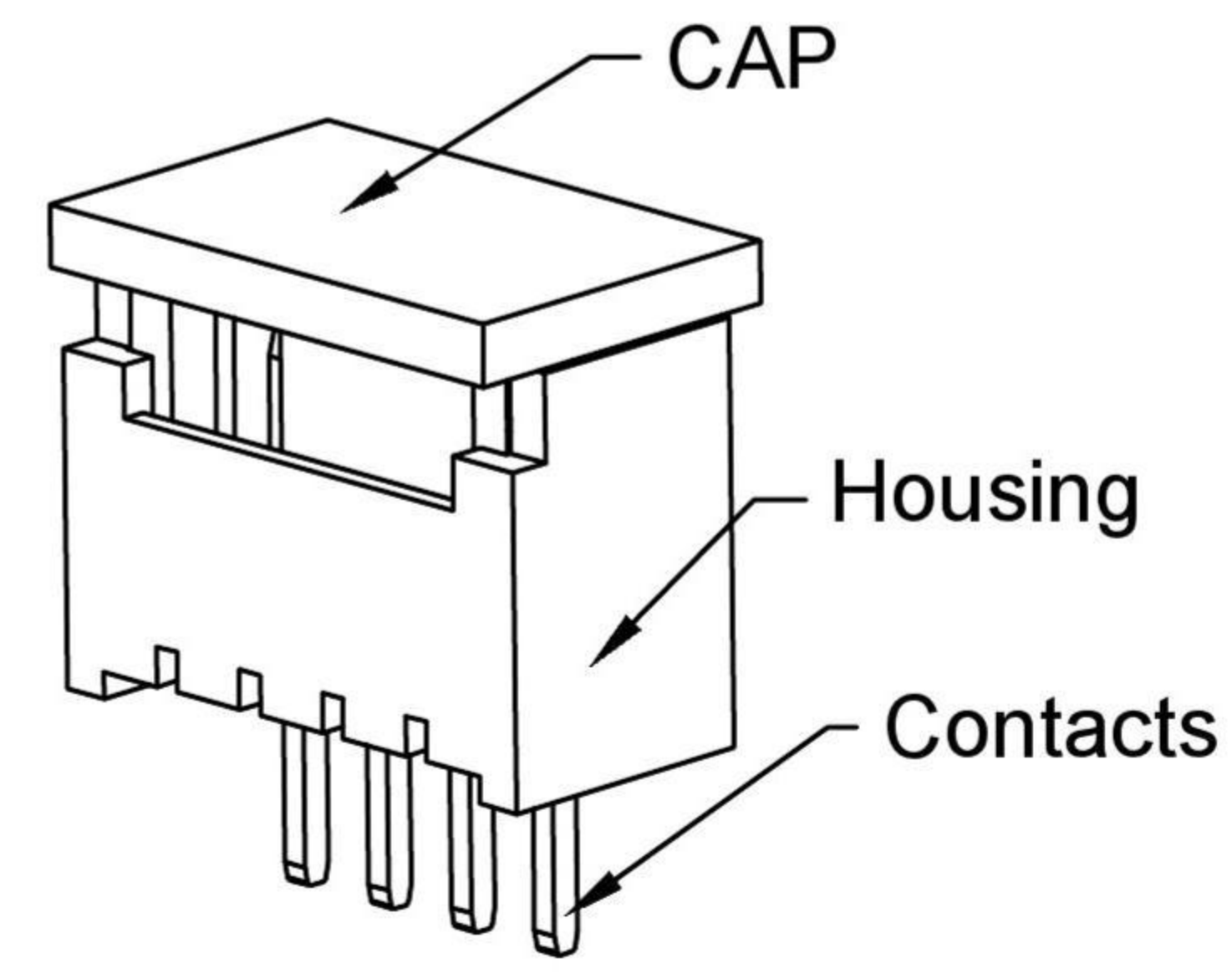
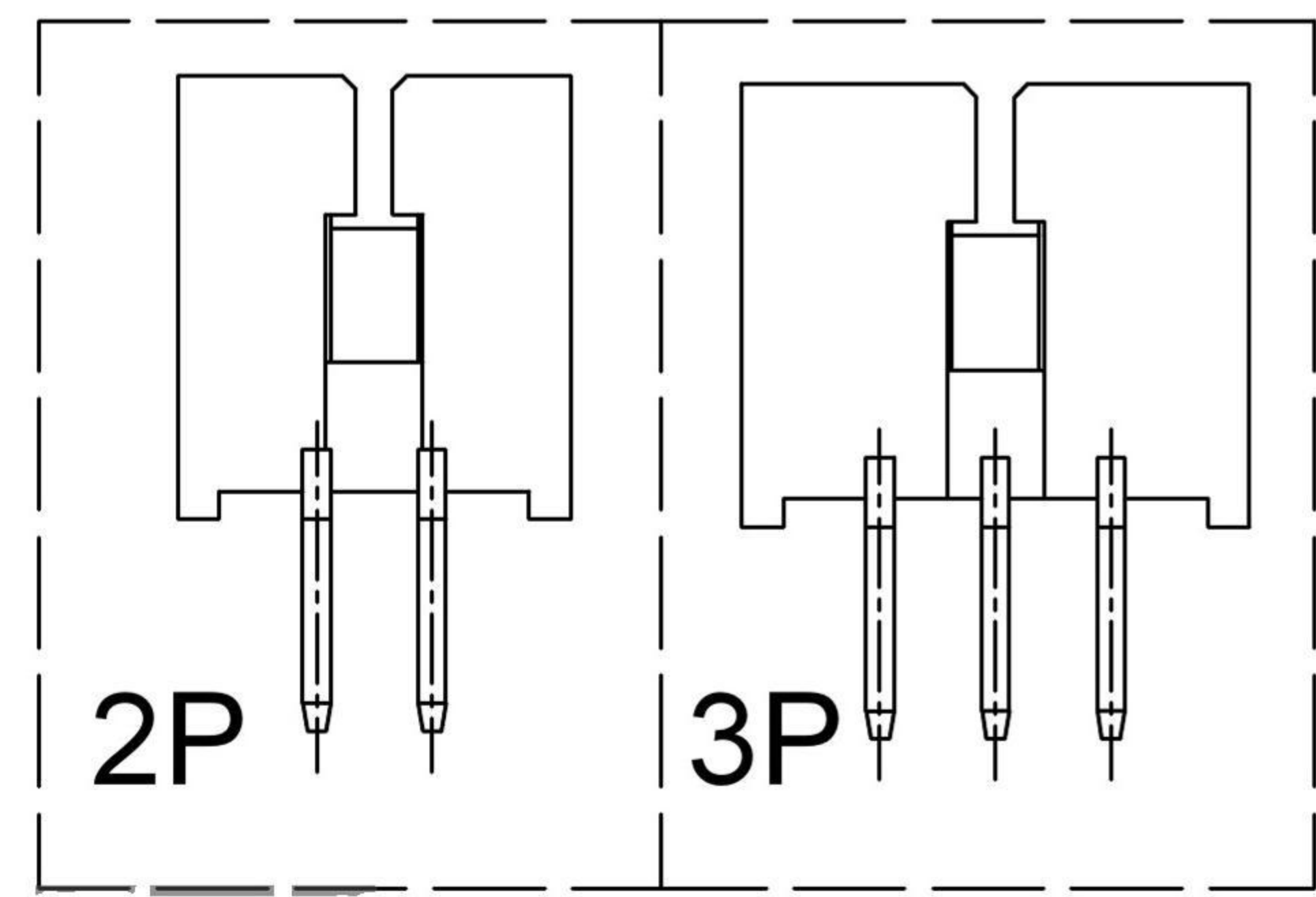
Poles	Dimensions(mm)		Poles	Dimensions(mm)	
	A	B		A	B
02	1.25	4.35	08	8.75	11.85
03	2.50	5.60	09	10.00	13.10
04	3.75	6.85	10	11.25	14.35
05	5.00	8.10	11	12.50	15.60
06	6.25	9.35	12	13.75	16.85
07	7.50	10.60	/		

X9821WV-XX-N0SN	PA66	Phosphor Bronze	X9821H
PART NO	Material	Material(Pin)	Suitable Housing

REVISIONS				ANGULAR	±5°		DSND	SCALE: N/A	MODEL TYPE: BOARD TO BOARD CONNECTOR
DATE				L ≤ 4	±0.2		DWN	VIEW: 	PART NO.:
REVISED				4 < L ≤ 16	±0.3		CHKD	UNIT: mm/in	DWG NO.:
APPROVED				16 < L ≤ 63	±0.4		APPD	SIZE: A4	
				L > 63	±0.5	DONG GUAN XI BANG ELECTRONIC CO., LTD			
				UNSPECIFIED TOLERANCES			WEIGHT	SHEET	REVISION
www.alpsr.com www.gdxjdz.com www.xbswitch.com								1/1	A0



Recommended PCB Layout(Top view)
Tolerance:±0.05mm



Specifications:
规格:
Voltage rating:125V AC/DC
额定电压: 125V AC/DC
Current rating:1A AC/DC
额定电流: 1A AC/DC
Withstanding voltage:500V AC/minute
耐受电压: 500V AC/分钟
Temperature range:-25°C-+105°C
温度范围: -25°C-+105°C
Insulation resistance:≥100MΩ
绝缘电阻: ≥100MΩ
Contact resistance:≤20mΩ
接触电阻: ≤20mΩ

X9821 W V - XX R - LP SN
① ② ③ ④ ⑤ ⑥ ⑦

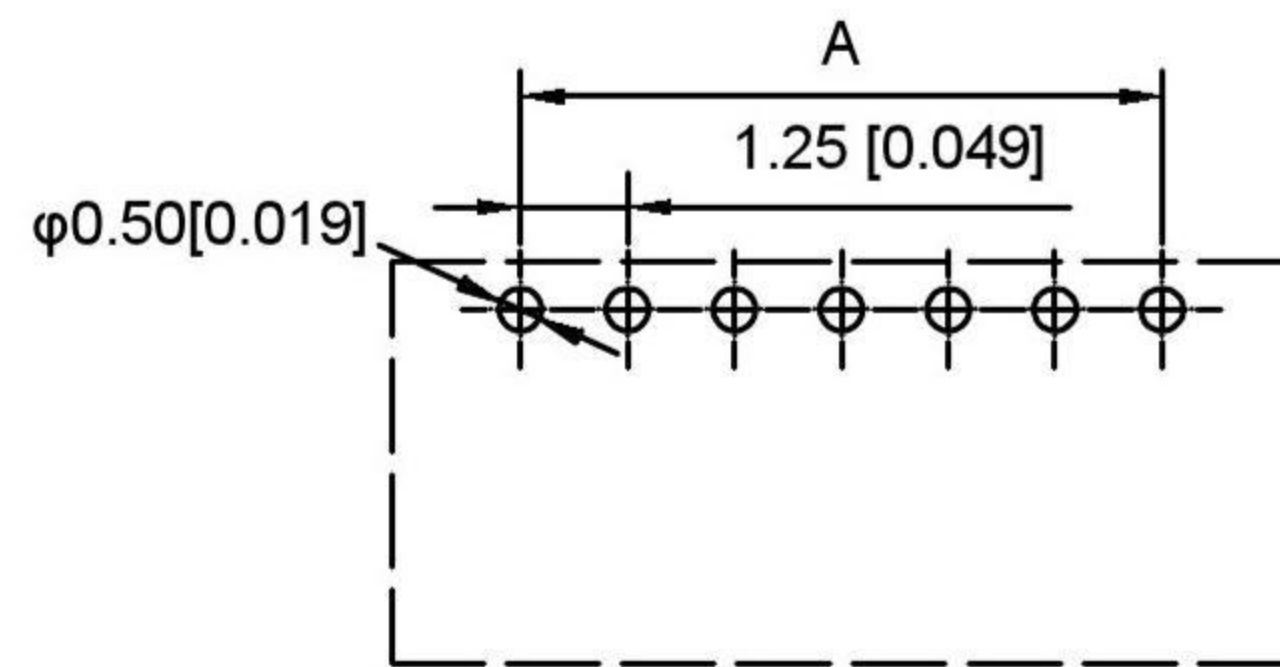
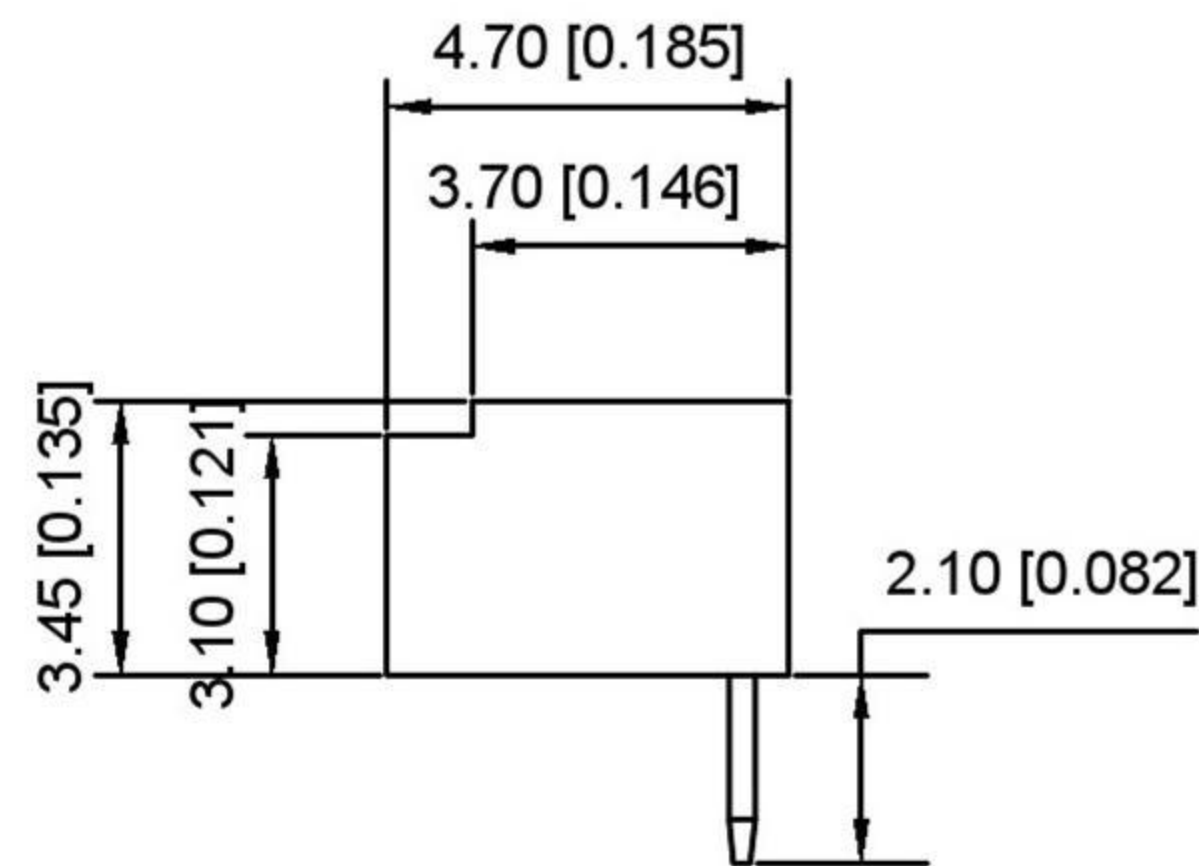
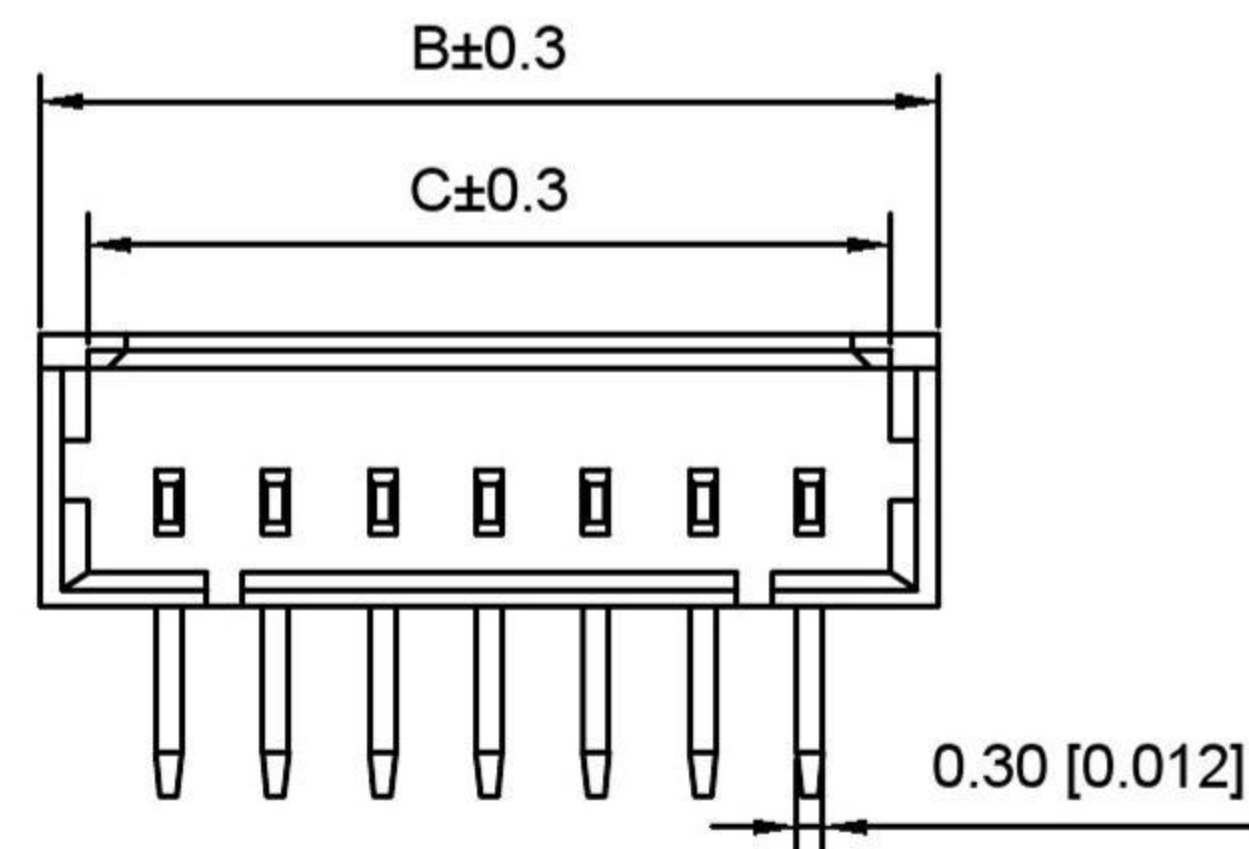
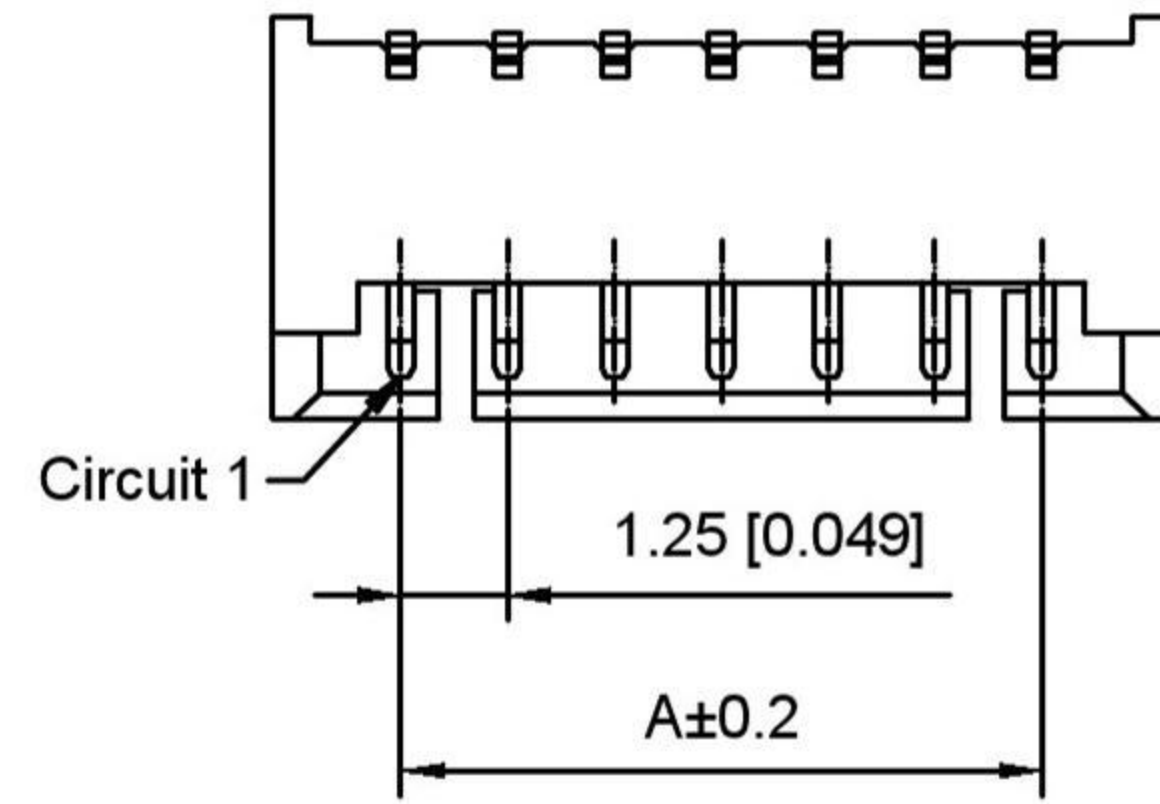
- 1.Series No
- 2.Category:W-Wafer
- 3.Welding Board Angle:V-Stright 180°
- 4.Row No.Pin No:XX-02~16Pin
- 5.Special No:R-DIP 2.3mm
- 6.Material:LP-LCP UL94V-0 ,Natural
CAP:LCP UL94V-0 ,Natural
- 7.Plating:SN- Tin Plated

Poles	Dimensions (mm)			Poles	Dimensions (mm)		
	A	B	C		A	B	C
02	1.25	3.20	4.25	10	11.25	13.20	14.25
03	2.50	4.45	5.50	11	12.50	14.45	15.50
04	3.75	5.70	6.75	12	13.75	15.70	16.75
05	5.00	6.95	8.00	13	15.00	16.95	18.00
06	6.25	8.20	9.25	14	16.25	18.20	19.25
07	7.50	9.45	10.50	15	17.50	19.45	20.50
08	8.75	10.70	11.75	16	18.75	20.70	21.75
09	10.00	11.95	13.00				

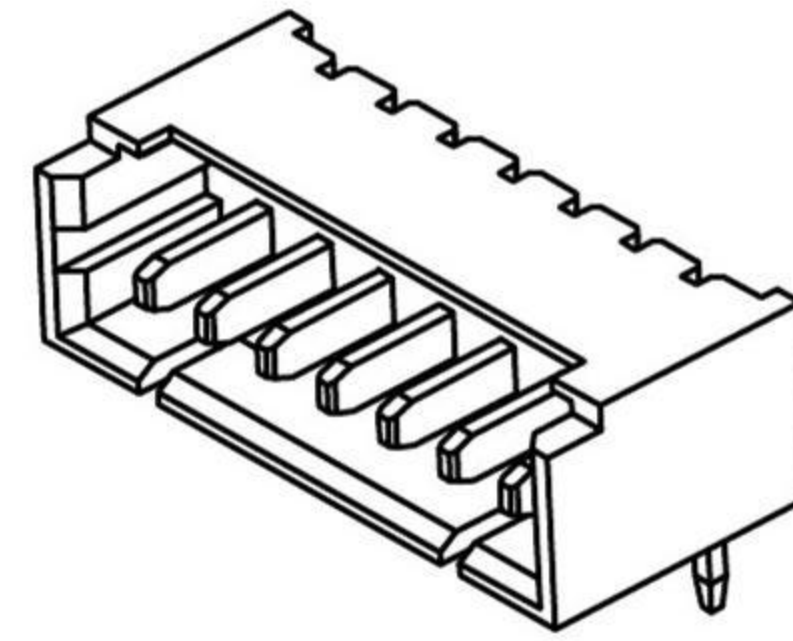
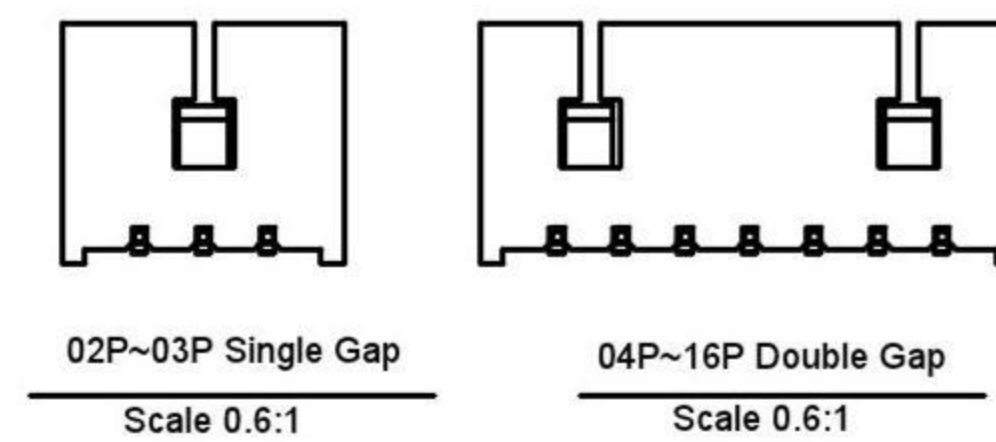
X9821WW-XXR-LPSN	LCP	Brass	X9821HM
PART NO	Material	Material(Pin)	Suitable Housing

REVISIONS				ANGULAR	±5°
				L ≤ 4	±0.2
				4 < L ≤ 16	±0.3
				16 < L ≤ 63	±0.4
				L > 63	±0.5
	DATE	REVISED	APPROVED	UNSPECIFIED TOLERANCES	

DSND		SCALE: N/A	MODEL TYPE: BOARD TO BOARD CONNECTOR		
DWN		VIEW:	PART NO.:		
CHKD		UNIT: mm/in	DWG NO.:		
APPD		SIZE: A4	WEIGHT	SHEET	REVISION
DONG GUAN XI BANG ELECTRONIC CO., LTD				1/1	A0



Recommended P.C.B Layout
General Tolerance±0.05



■ Specifications :

- Voltage rating: 125V AC / DC
- Current rating: 1A AC / DC
- Withstanding voltage: 800V AC/minute
- Temperature range: -25°C~+85°C
- Insulation resistance: ≥1000M Ω
- Contact resistance: ≤10mΩ
- After environmental testing : ≤20mΩ

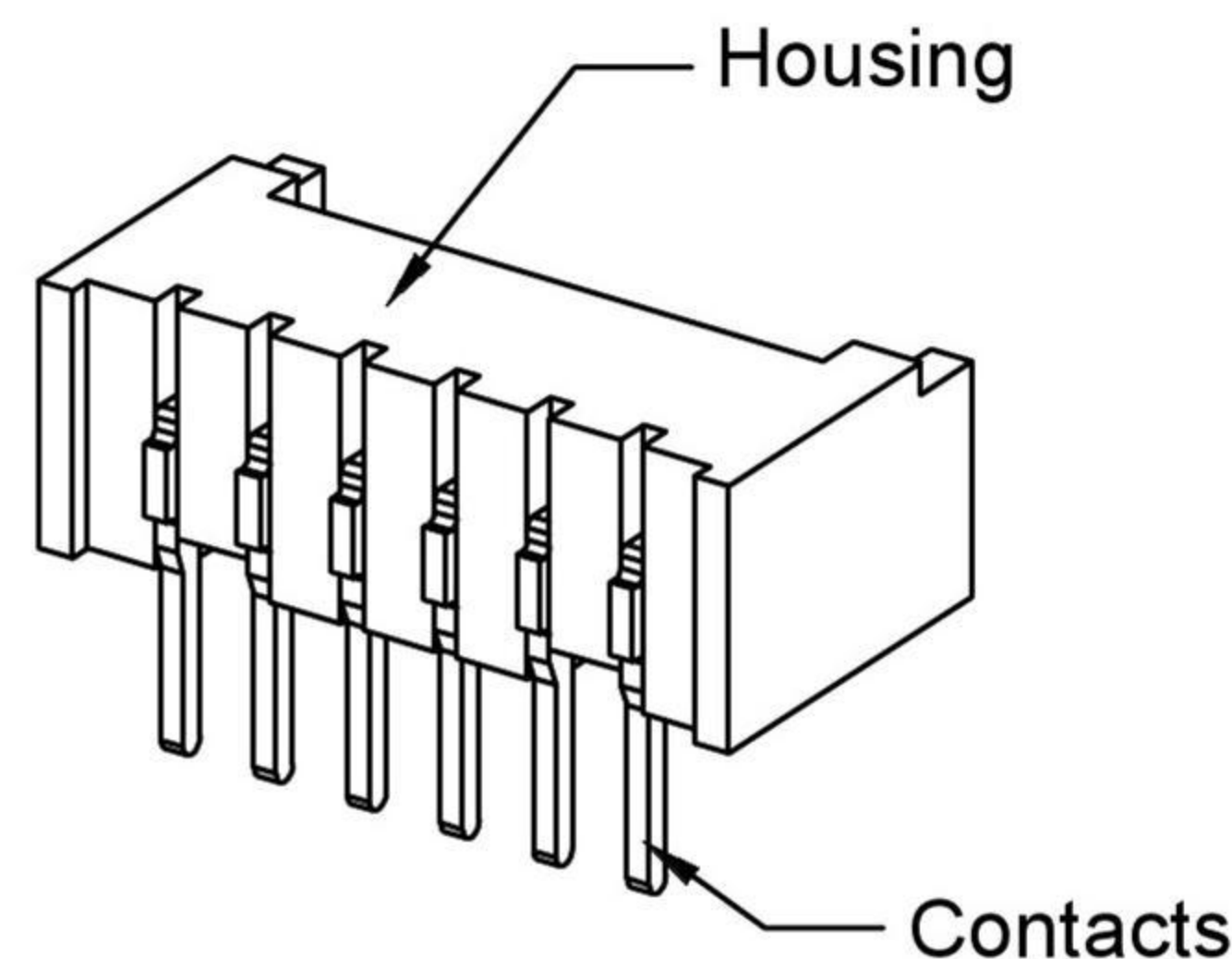
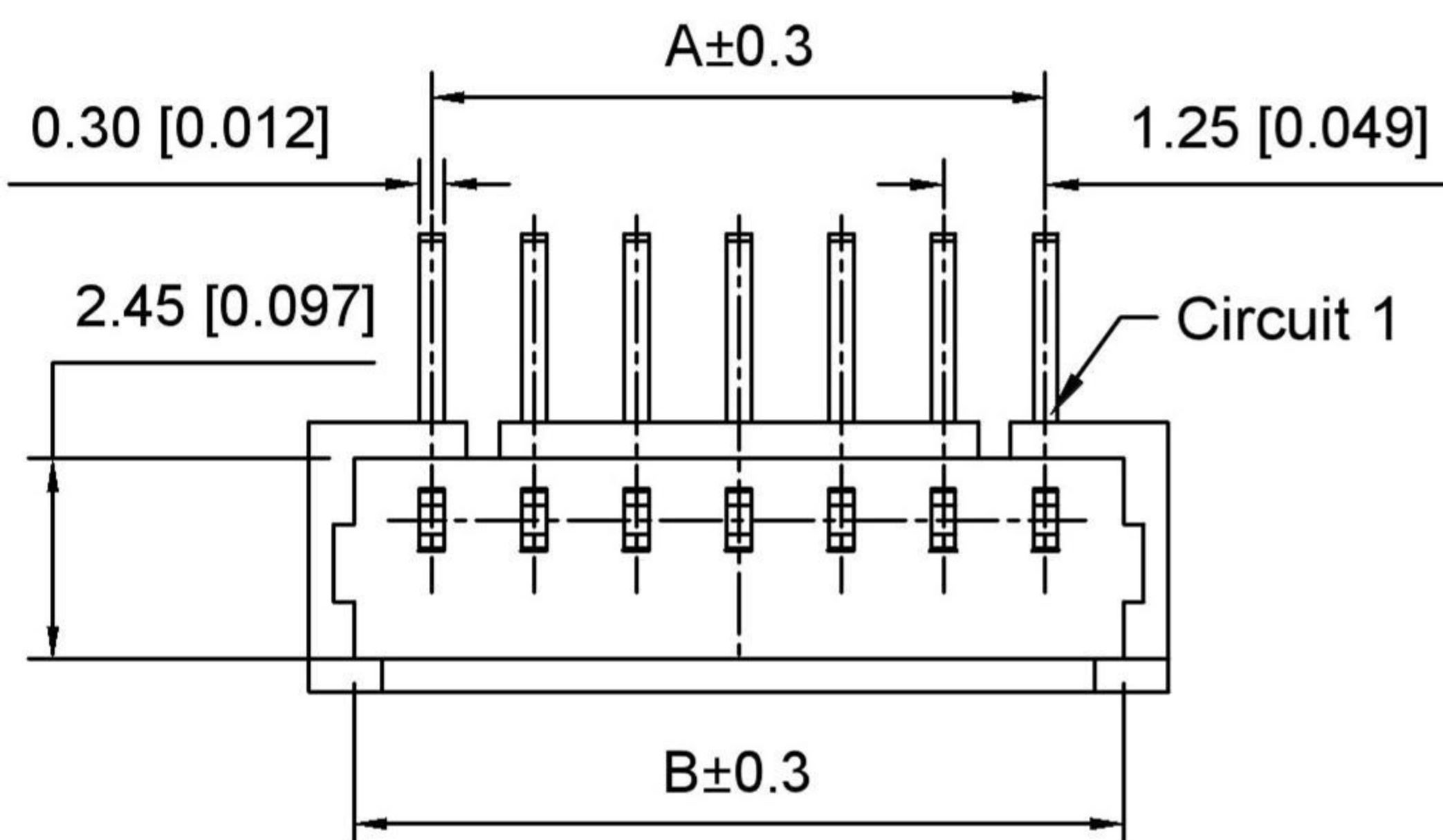
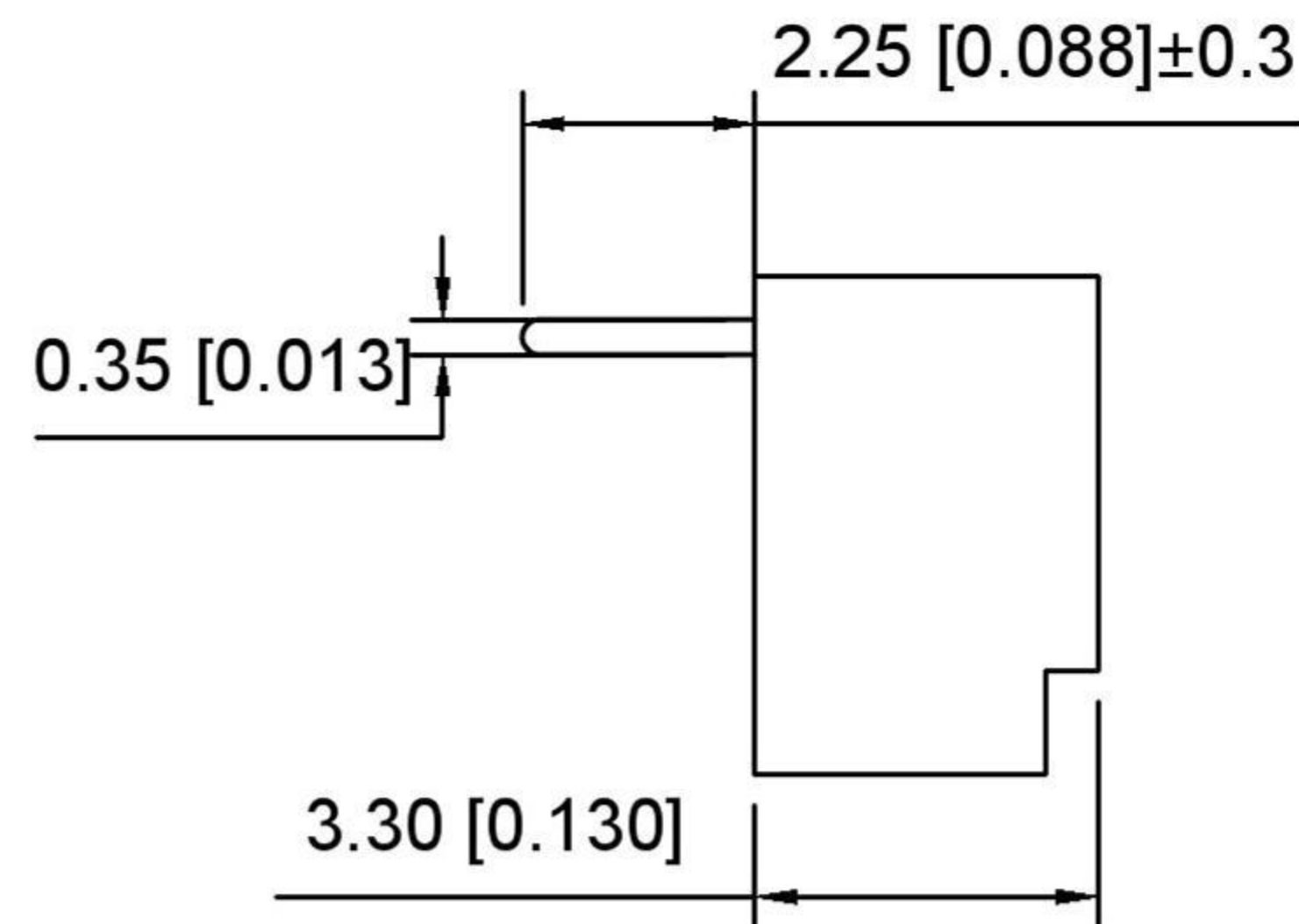
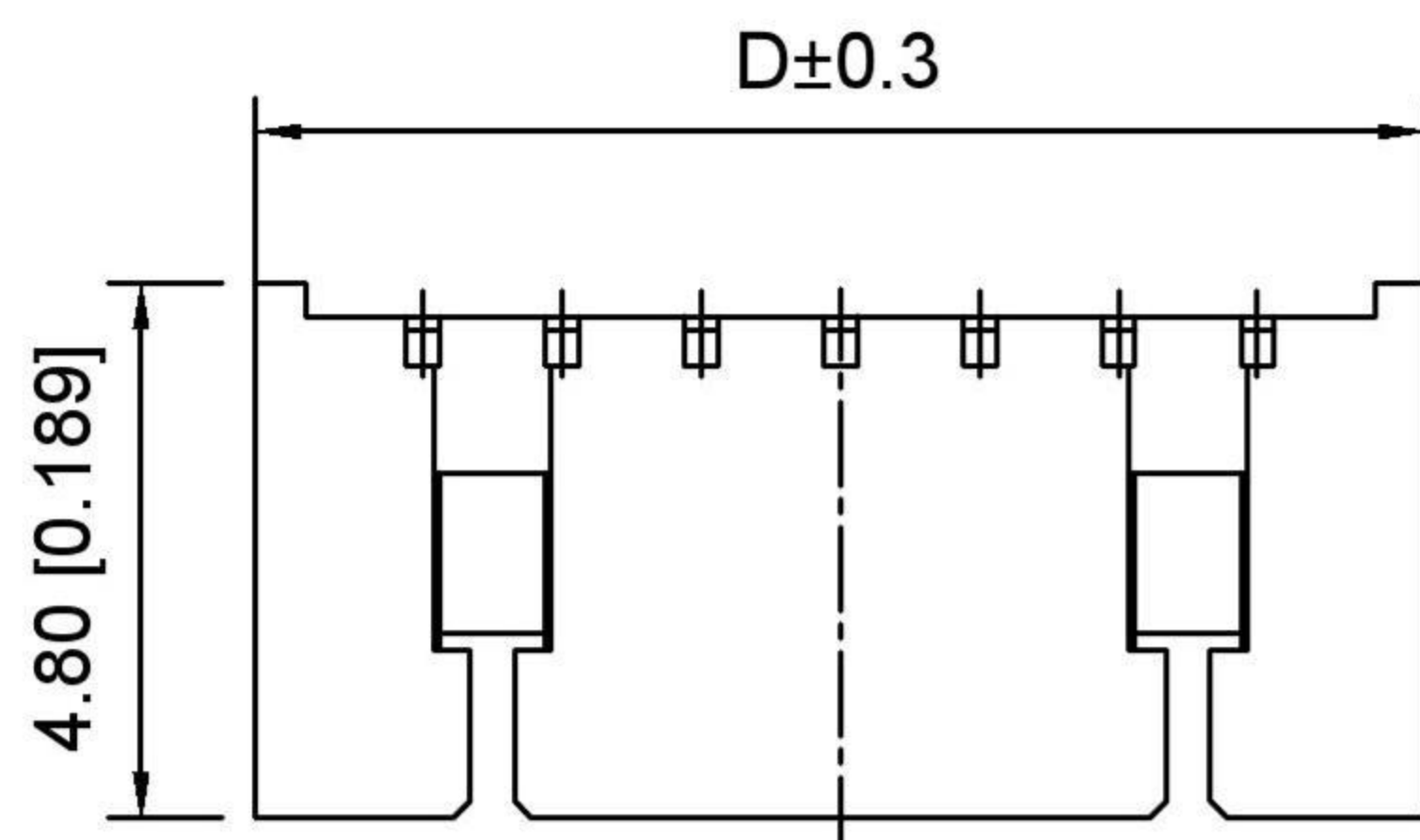
X9821 W R-XX- N0 SN
① ② ③ ④ ⑤ ⑥

- ① Series No.
- ② Category : W-WAFER
- ③ Wedding Board Angle : R-Stright 90°
- ④ Row No.-Pin No.: XX-02P~16P
- ⑤ Material : N0-PA66 94V-0
- ⑥ Plating Category: Sn-Bright Tin Plating

Poles	Dimensions(mm)			Poles	Dimensions(mm)		
	A	B	C		A	B	C
02	1.25	4.25	3.15	10	11.25	14.25	13.15
03	2.50	5.50	4.40	11	12.50	15.50	14.40
04	3.75	6.75	5.65	12	13.75	16.75	15.65
05	5.00	8.00	6.90	13	15.00	18.00	16.90
06	6.25	9.25	8.15	14	16.25	19.25	18.15
07	7.50	10.50	9.40	15	17.50	20.50	19.40
08	8.75	11.75	10.65	16	18.75	21.75	20.65
09	10.00	13.00	11.90				

X9821WR-XX-N0SN	Nyoln 66 UL 94V-0	Brass	Tin-Plated	X9821H
PART NO	Material	Material(pin)	Finish(pin)	Suitable Terminal

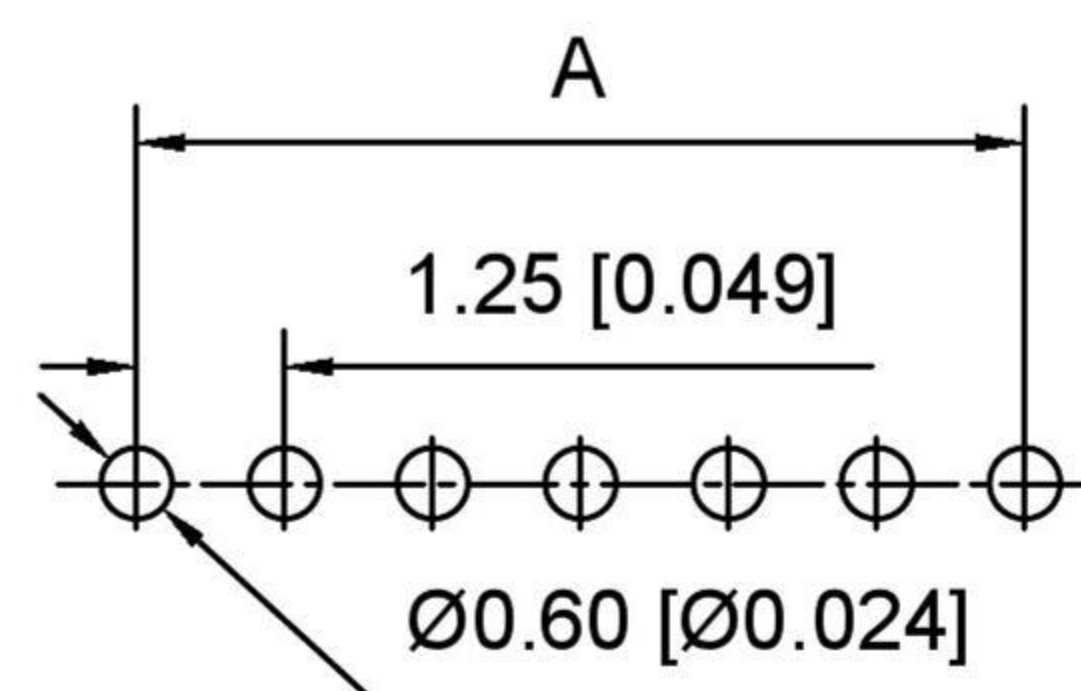
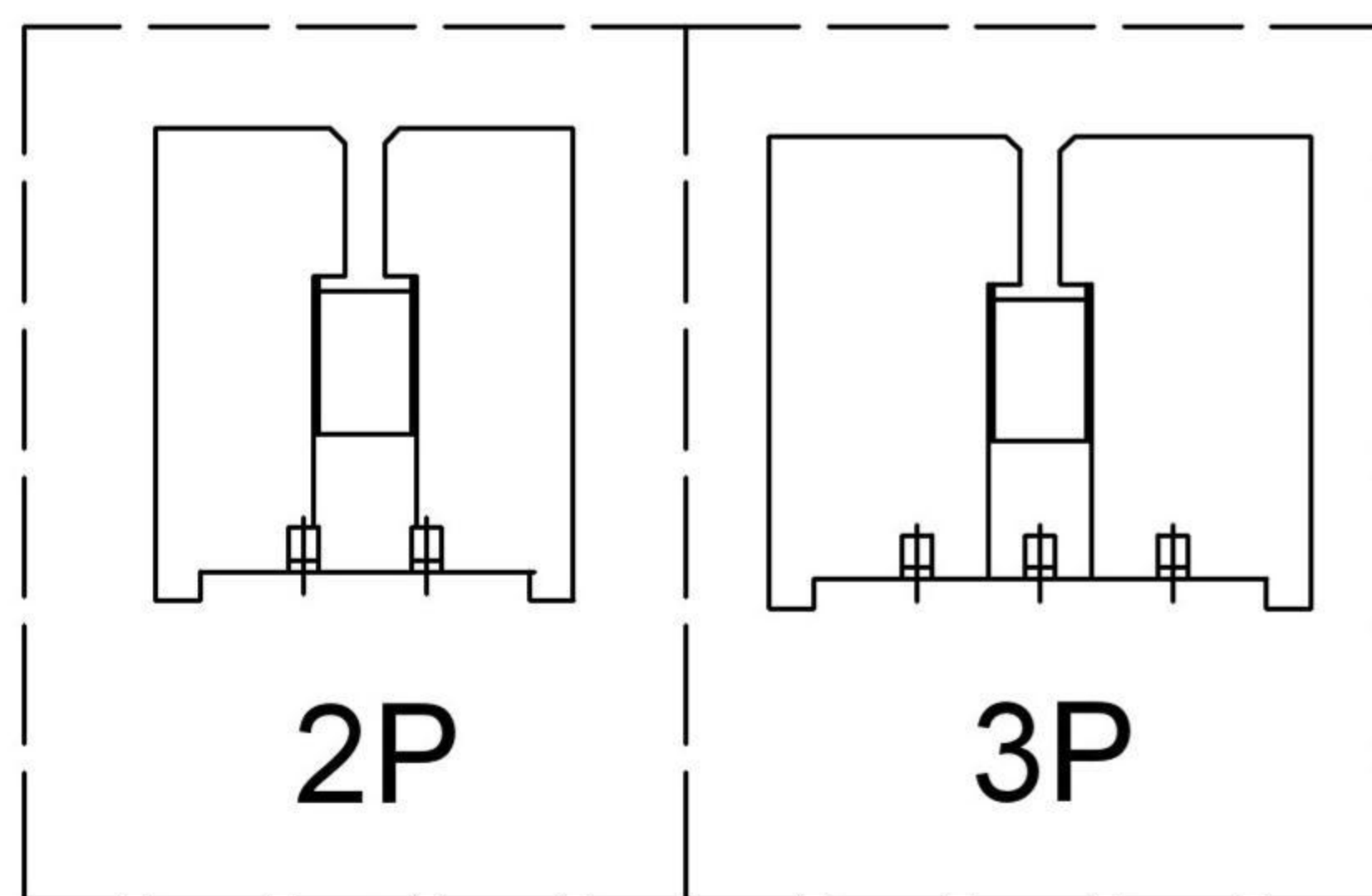
				ANGLAR	±5°		DSND		SCALE: N/A	MODEL TYPE: BOARD TO BOARD CONNECTOR		
				L ≤ 4	±0.2		DWN		VIEW:	PART NO.:		
				4 < L ≤ 16	±0.3		CHKD		UNIT: mm/in	DWG NO.:		
				16 < L ≤ 63	±0.4		APPD		SIZE: A4			
				L > 63	±0.5							
REVISIONS				UNSPECIFIED TOLERANCES		DONG GUAN XI BANG ELECTRONIC CO., LTD				WEIGHT	SHEET	REVISION
www.alpsr.com www.gdxjdz.com www.xbswitch.com											1/1	A0



Specifications:
 规格:
 Voltage rating:125V AC/DC
 额定电压: 125V AC/DC
 Current rating:1A AC/DC
 额定电流: 1A AC/DC
 Withstanding voltage:500V AC/minute
 耐受电压: 500V AC/分钟
 Temperature range:-25°C-+105°C
 温度范围: -25°C-+105°C
 Insulation resistance:≥100MΩ
 绝缘电阻: ≥100MΩ
 Contact resistance:≤20mΩ
 接触电阻: ≤20mΩ

X9821 W R - XX R - LP SN
 ① ② ③ ④ ⑤ ⑥ ⑦

- 1.Series No
- 2.Category:W-Wafer
- 3.Welding Board Angle:R-Stright 90°
- 4.Row No.Pin No:XX-02~16Pin
- 5.Special No:R-DIP 2.25mm
- 6.Material:LP-LCP UL94V-0 ,Natural
- 7.Plating:SN- Tin Plated



Recommended PCB Layout(Top view)
 Tolerance:±0.05mm

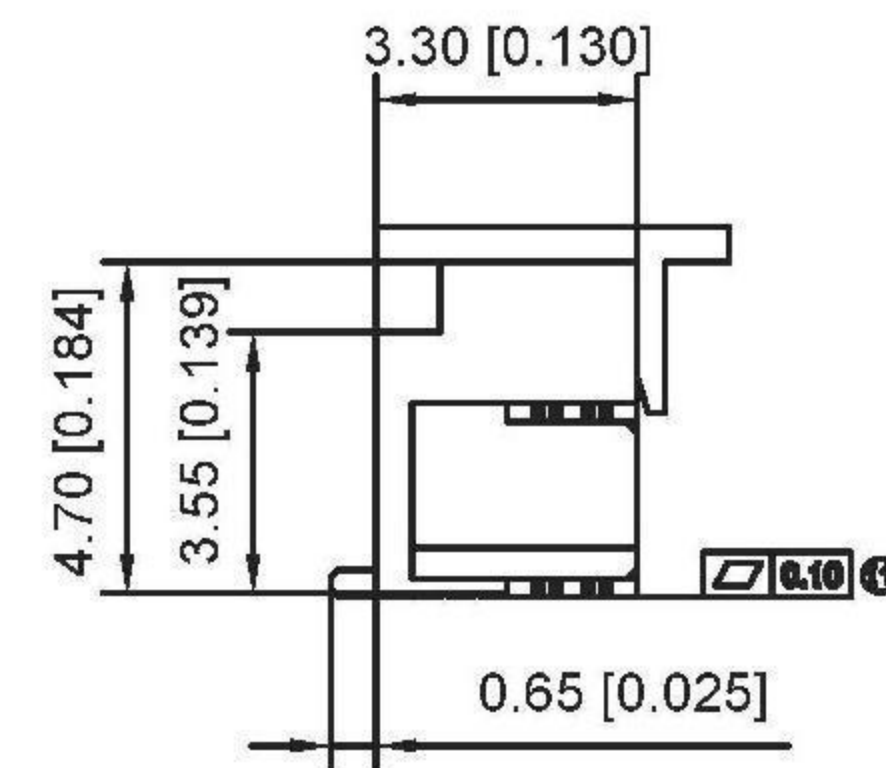
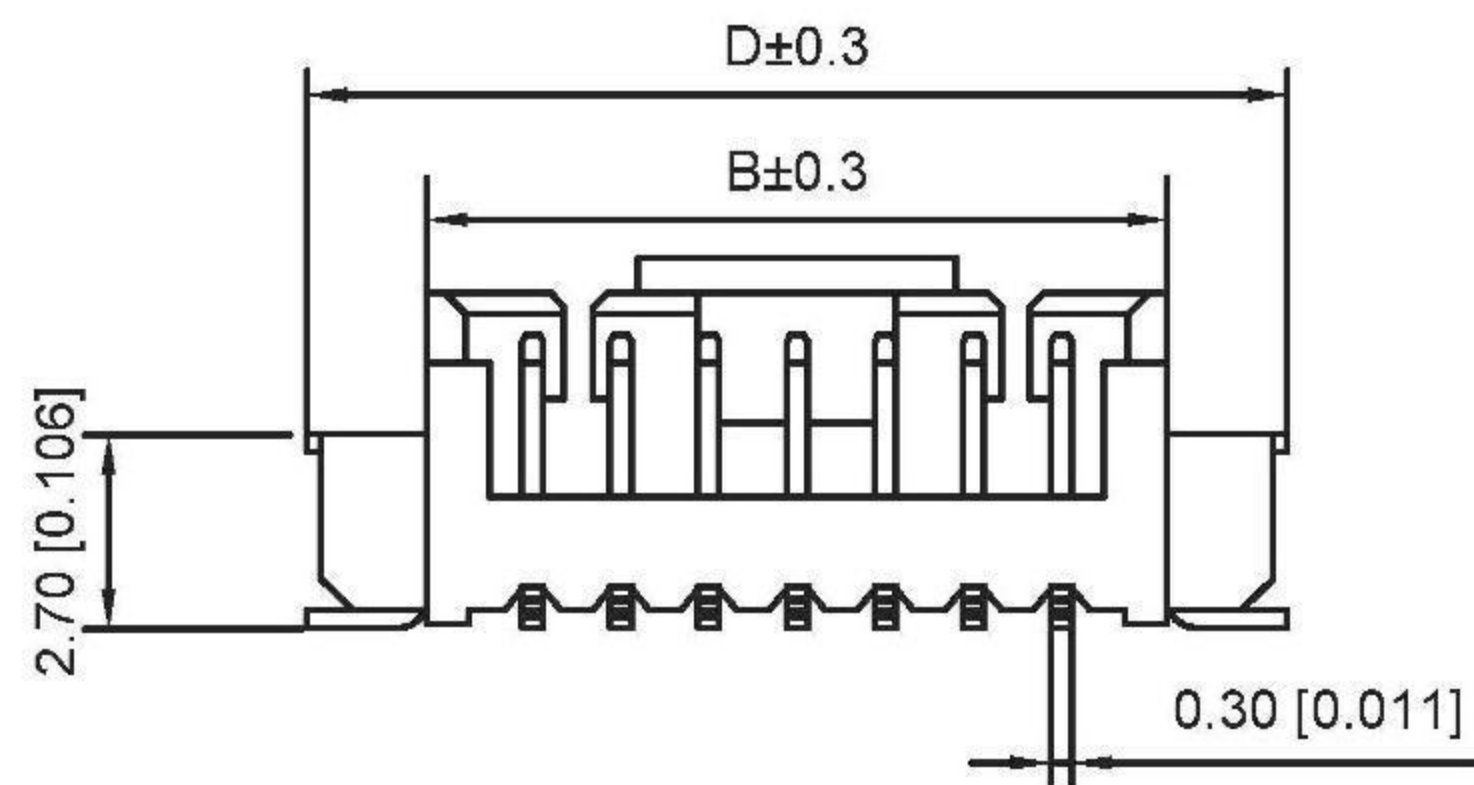
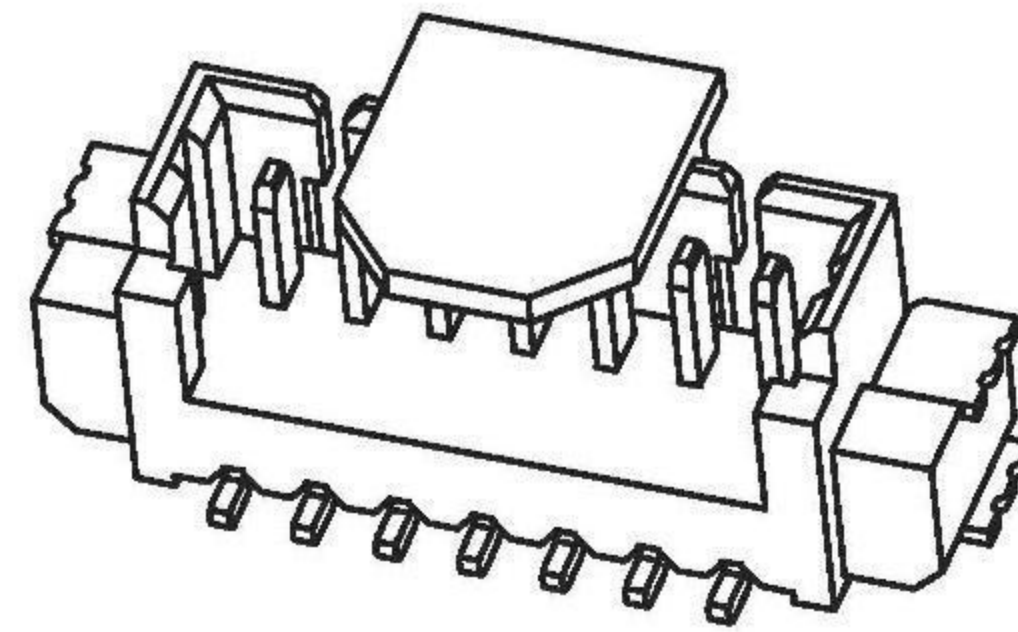
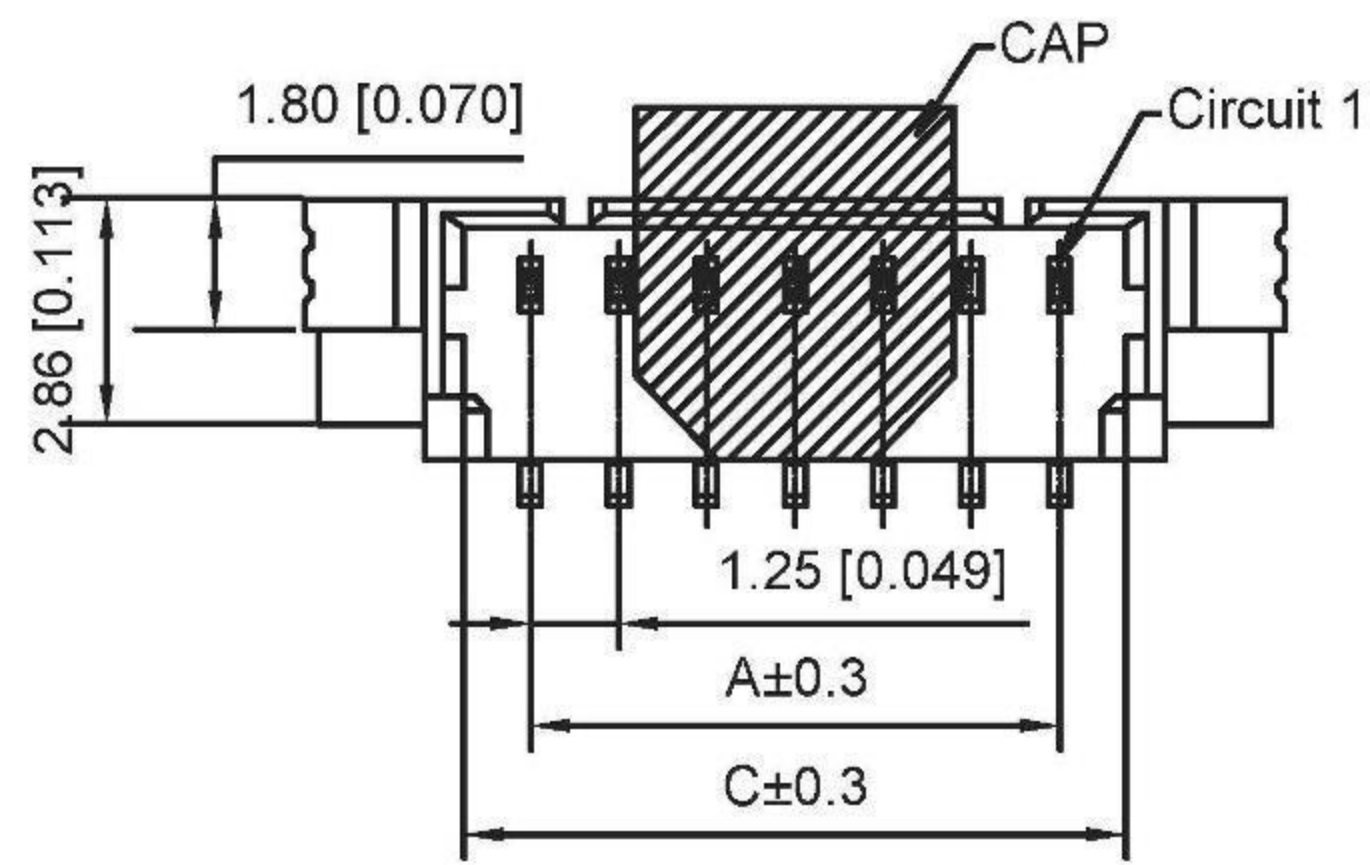
Poles	Dimensions (mm)			Poles	Dimensions (mm)		
	A	B	C		A	B	C
02	1.25	3.20	4.25	10	11.25	13.20	14.25
03	2.50	4.45	5.50	11	12.50	14.45	15.50
04	3.75	5.70	6.75	12	13.75	15.70	16.75
05	5.00	6.95	8.00	13	15.00	16.95	18.00
06	6.25	8.20	9.25	14	16.25	18.20	19.25
07	7.50	9.45	10.50	15	17.50	19.45	20.50
08	8.75	10.70	11.75	16	18.75	20.70	21.75
09	10.00	11.95	13.00				

X9821WR-XXR-LPSN	LCP	Brass	X9821HM
PART NO	Material	Material(Pin)	Suitable Housing

REVISIONS	DATE	REVISED	APPROVED	UNSPECIFIED TOLERANCES
				ANGULAR ±5°
				L ≤ 4 ±0.2
				4 < L ≤ 16 ±0.3
				16 < L ≤ 63 ±0.4
				L > 63 ±0.5



DSND	SCALE: N/A	MODEL TYPE: BOARD TO BOARD CONNECTOR
DWN	VIEW:	PART NO.:
CHKD	UNIT: mm/in	DWG NO.:
APPD	SIZE: A4	WEIGHT
DONG GUAN XI BANG ELECTRONIC CO., LTD		SHEET
		1/1
		REVISION
		A0



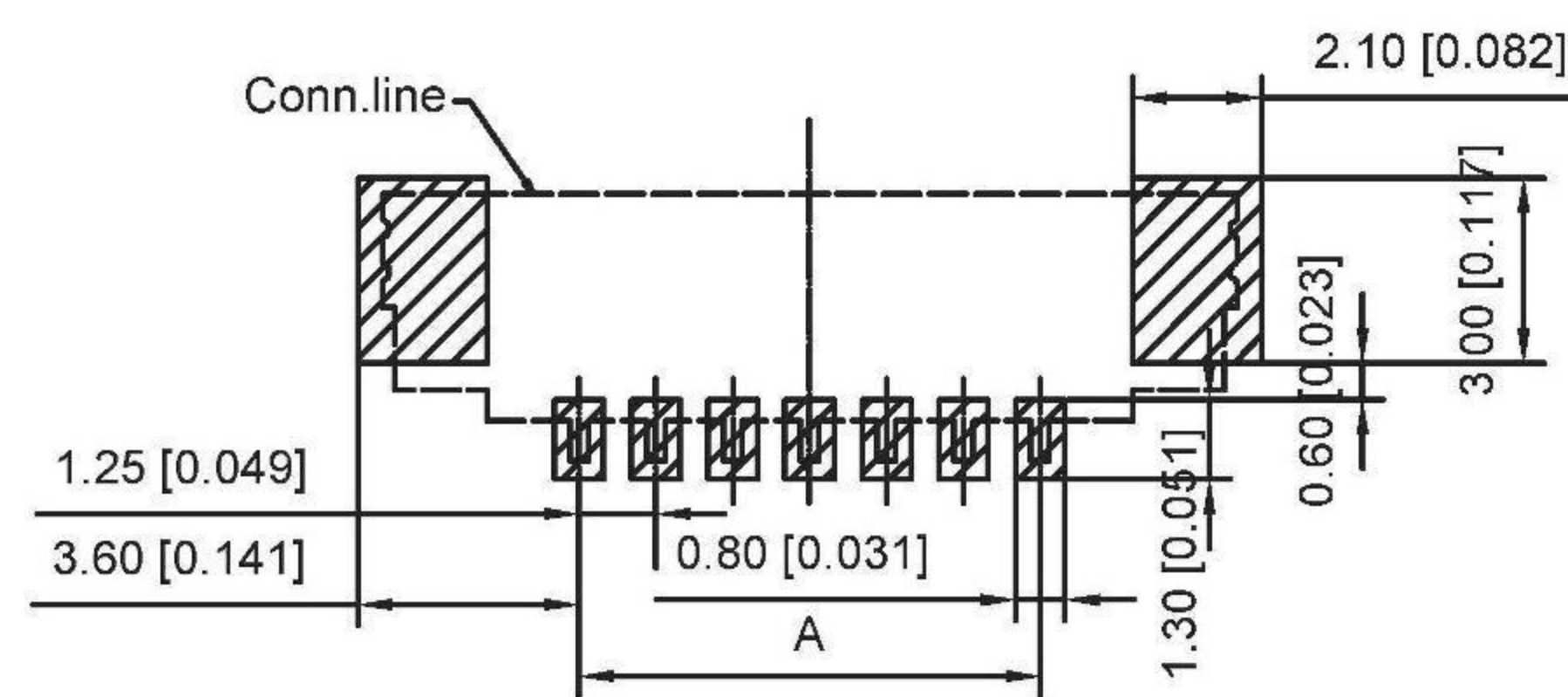
■ Specifications :

- Voltage rating: 125V AC / DC
- Current rating: 1A AC / DC
- Withstanding voltage: 250V AC/minute
- Temperature range: -25°C~+85°C
- Insulation resistance: ≥100MΩ
- Contact resistance: ≤20mΩ
- After environmental testing : ≤40mΩ

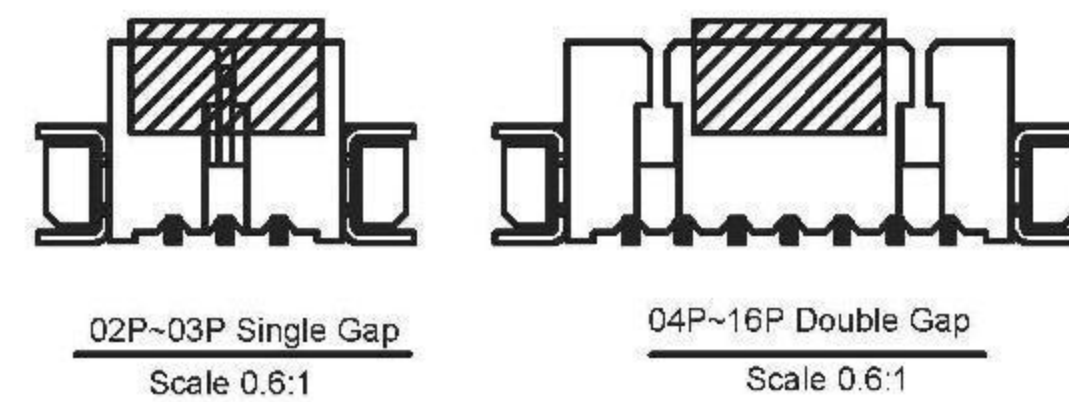
X9821 W V S-XX-9T SN
① ② ③ ④ ⑤ ⑥ ⑦

- ① Series No.
- ② Category : W-WAFER
- ③ Welding Board Angle : V-Straight 90°
- ④ Welding Way:S-SMT
- ⑤ Row No.-Pin No.: XX-02P~16P
- ⑥ Material : 9T-PA9T 94V-0
- ⑦ Plating Category: Sn-Bright Tin Plating

Poles	Dimensions(mm)				Poles	Dimensions(mm)			
	A	B	C	D		A	B	C	D
02	1.25	4.25	3.15	7.65	10	11.25	14.25	13.15	17.65
03	2.50	5.50	4.40	8.90	11	12.50	15.50	14.40	18.90
04	3.75	6.75	5.65	10.15	12	13.75	16.75	15.65	20.15
05	5.00	8.00	6.90	11.40	13	15.00	18.00	16.90	21.40
06	6.25	9.25	8.15	12.65	14	16.25	19.25	18.15	22.65
07	7.50	10.50	9.40	13.90	15	17.50	20.50	19.40	23.90
08	8.75	11.75	10.65	15.15	16	18.75	21.75	20.65	25.15
09	10.00	13.00	11.90	16.40					



Recommended P.C.B Layout
General Tolerance ± 0.05



X9821WVS-XX-9TSN	PA9T UL 94V-0	Brass	Tin-Plated	X9821H
PART NO	Material	Material(pin)	Finish(pin)	Suitable Terminal

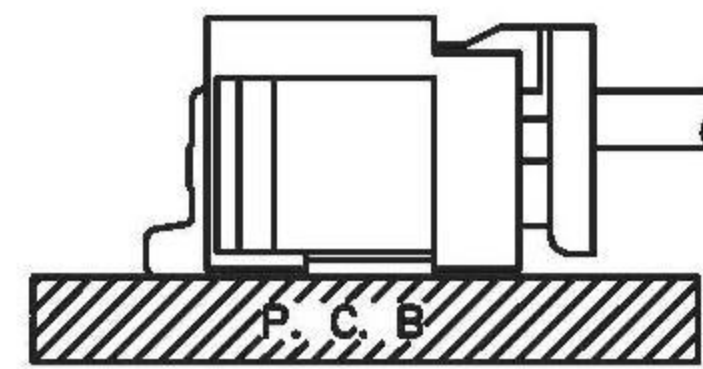
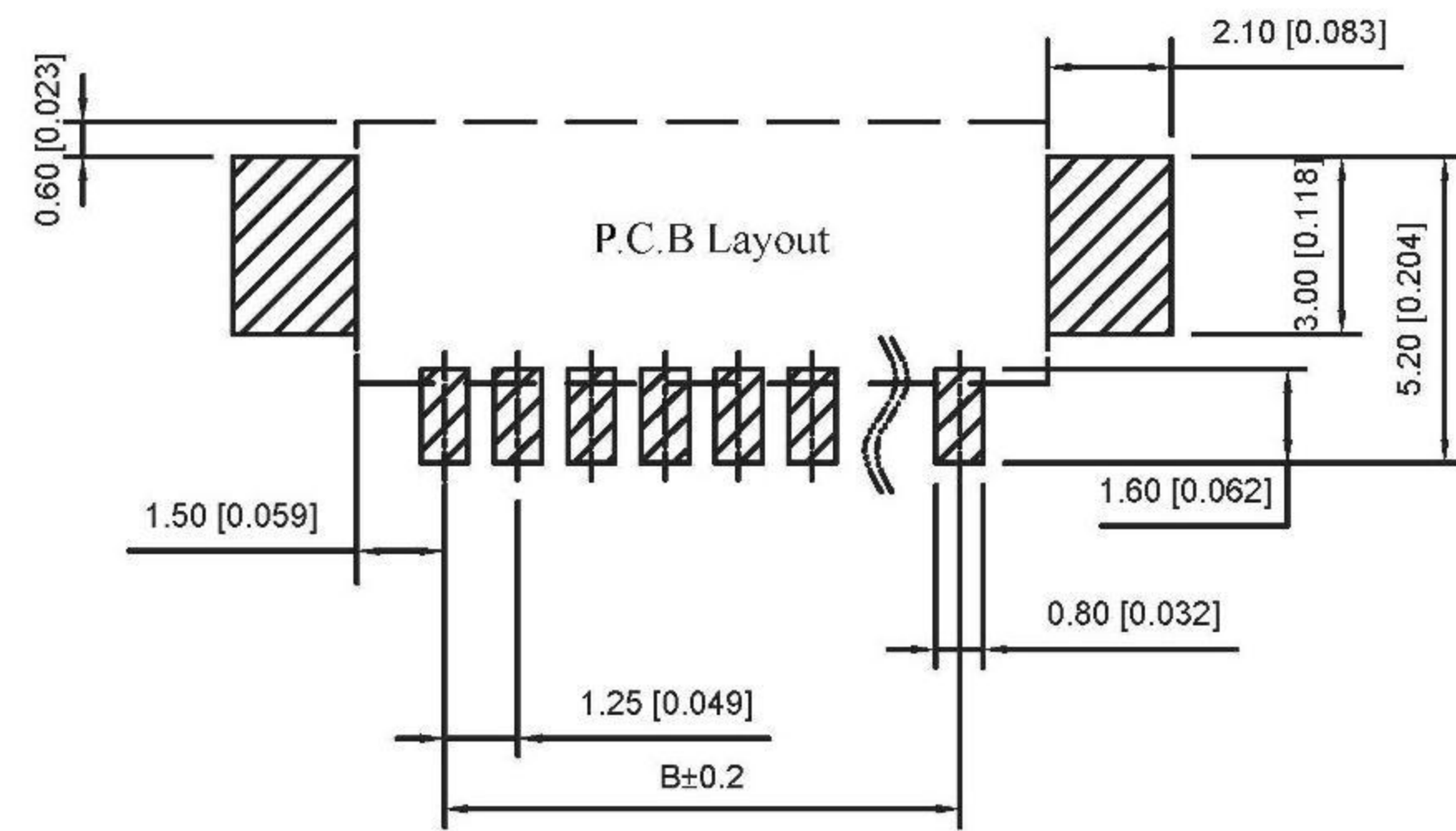
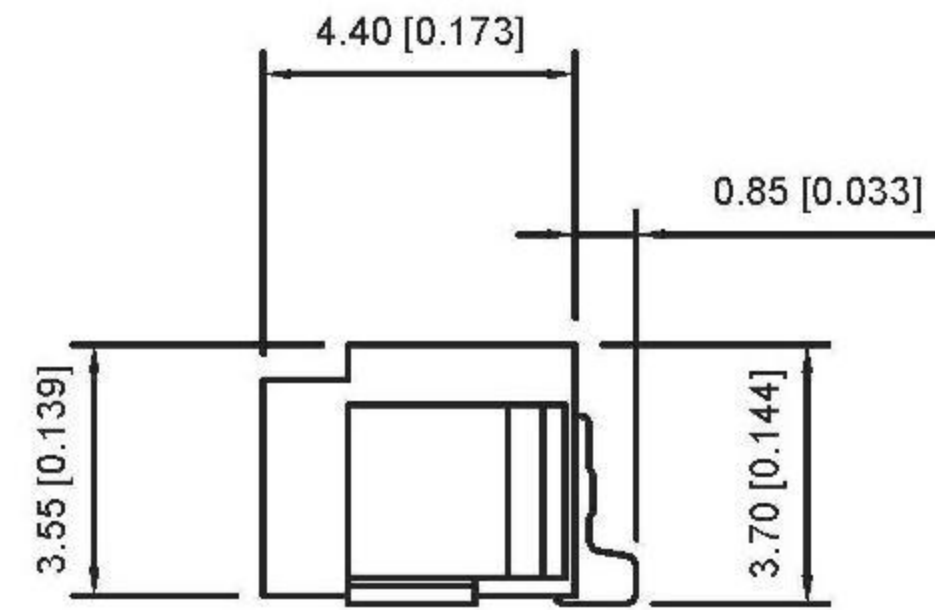
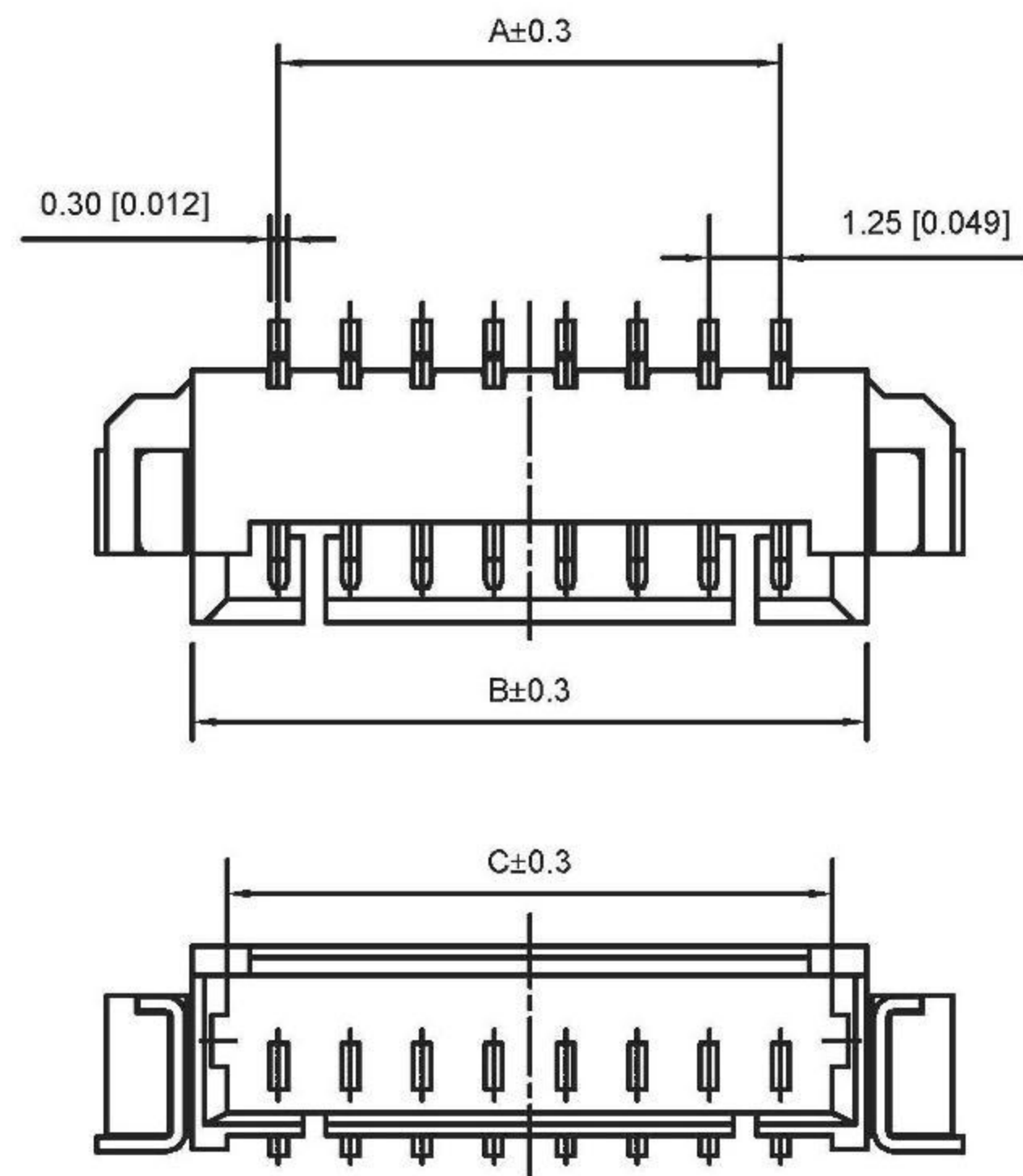
DSND		SCALE: N/A	MODEL TYPE: BOARD TO BOARD CONNECTOR
DWN		VIEW:	PART NO.:
CHKD		UNIT: mm/in	DWG NO.:
APPD		SIZE: A4	

				ANGULAR	±5°
				L ≤ 4	±0.2
				4 < L ≤ 16	±0.3
				16 < L ≤ 63	±0.4
				L > 63	±0.5
	DATE	REVISED	APPROVED	UNSPECIFIED TOLERANCES	
REVISIONS					
www.alpsr.com www.gdxjdz.com www.xbswitch.com					



DONG GUAN XI BANG ELECTRONIC CO., LTD

WEIGHT	SHEET	REVISION
	1/1	A0



■ Specifications :

- Voltage rating: 125V AC / DC
- Current rating: 1A AC / DC
- Withstanding voltage: 250V AC/minute
- Temperature range: -25°C~+85°C
- Insulation resistance: ≥100MΩ
- Contact resistance: ≤20mΩ
- After environmental testing : ≤40mΩ

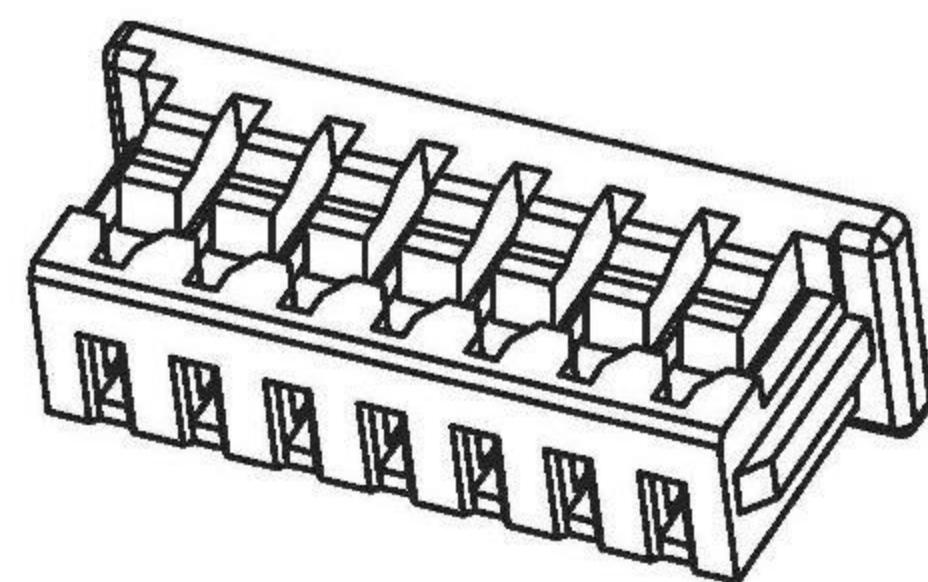
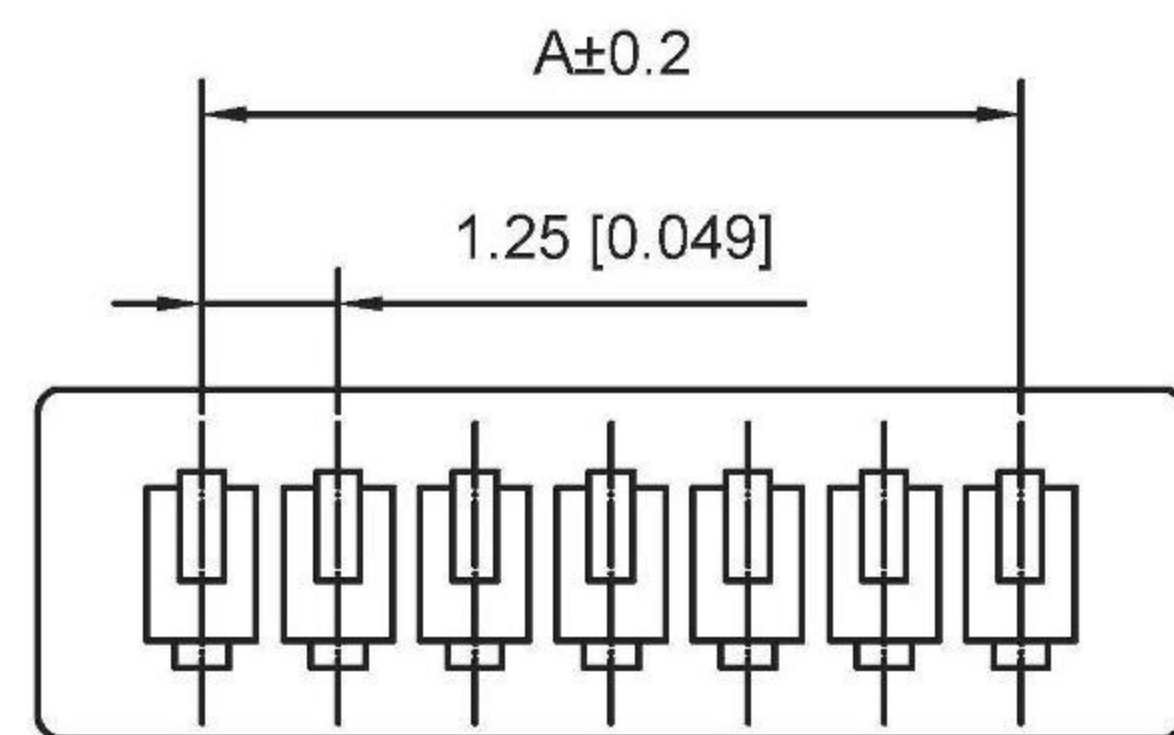
X9821 WRS-XX-9T SN
① ② ③ ④ ⑤ ⑥ ⑦

- ① Series No.
- ② Category : W-WAFER
- ③ Welding Board Angle : R-Straight 90°
- ④ Welding Way:S-SMT
- ⑤ Row No.-Pin No.: XX-02P~16P
- ⑥ Material : 9T-PA9T 94V-0
- ⑦ Plating Category: Sn-Bright Tin Plating

Poles	Dimensions(mm)			Poles	Dimensions(mm)		
	A	B	C		A	B	C
02	1.25	4.25	3.05	12	13.75	16.75	15.55
03	2.50	5.50	4.30	13	15.00	18.00	16.80
04	3.75	6.75	5.55	14	16.25	19.25	18.05
05	5.00	8.00	6.80	15	17.50	20.50	19.30
06	6.25	9.25	8.05	16	18.75	21.75	20.55
07	7.50	10.50	9.30				
08	8.75	11.75	10.55				
09	10.00	13.00	11.80				
10	11.25	14.25	13.05				
11	12.50	15.50	14.30				

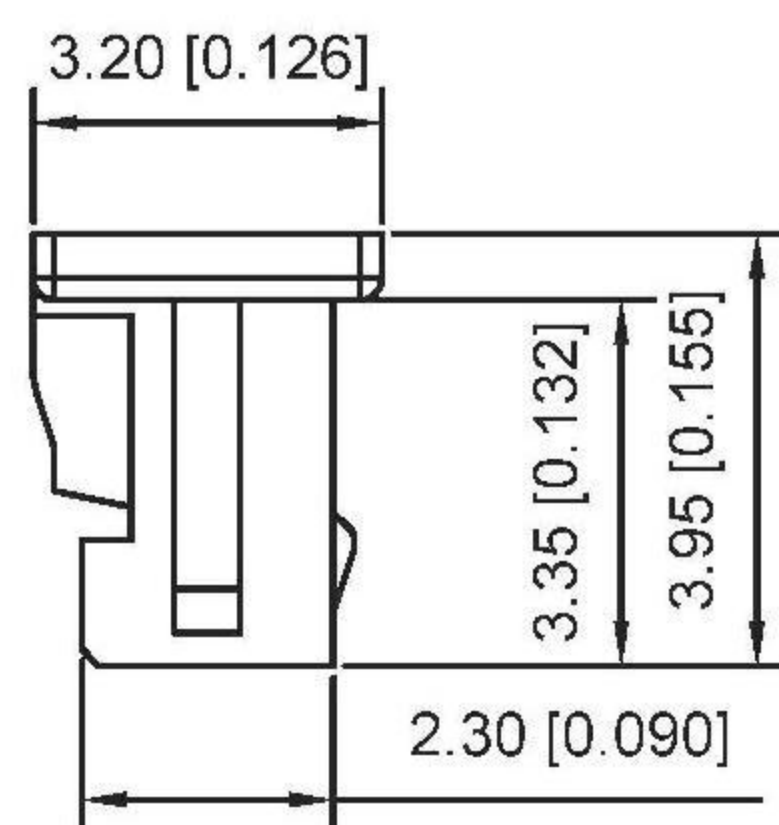
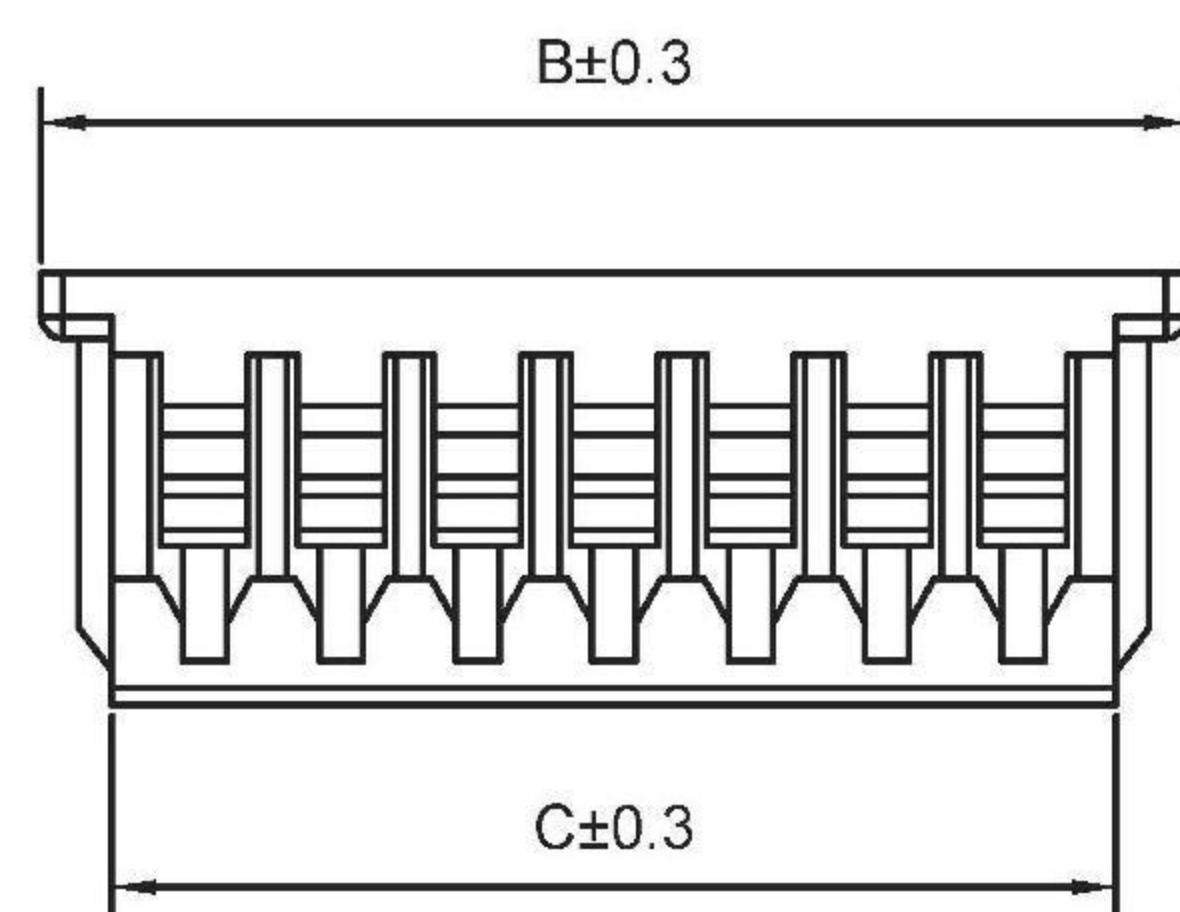
X9821WRS-XX-9TSN	PA9T UL 94V-0	Brass	Tin-Plated	X9821H
PART NO	Material	Material(pin)	Finish(pin)	Suitable Terminal

REVISIONS				UNSPECIFIED TOLERANCES		DSND	SCALE: N/A	MODEL TYPE: BOARD TO BOARD CONNECTOR
DATE	REVISED	APPROVED	ANGLAR ±5°	DWN		VIEW:	PART NO.:	
			L ≤ 4 ±0.2	CHKD	UNIT: mm/in	DWG NO.:		
			4 < L ≤ 16 ±0.3	APPD	SIZE: A4			
			16 < L ≤ 63 ±0.4	DONG GUAN XI BANG ELECTRONIC CO., LTD			WEIGHT	
			L > 63 ±0.5				SHEET	
www.alpsr.com www.gdxjdz.com www.xbswitch.com							1/1	
							REVISION	
							A0	



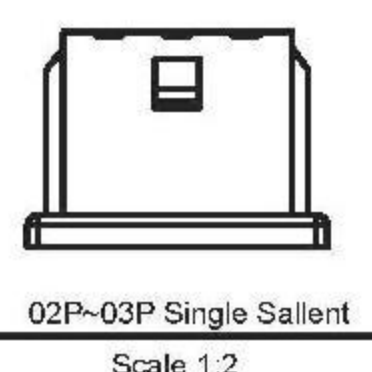
■ Specifications :

- Voltage rating: 125V AC / DC
- Current rating: 1A AC / DC
- Withstanding voltage: 250V AC/minute
- Temperature range: -25°C~+85°C
- Insulation resistance: ≥100MΩ
- Contact resistance: ≤20mΩ
- After environmental testing : ≤40mΩ

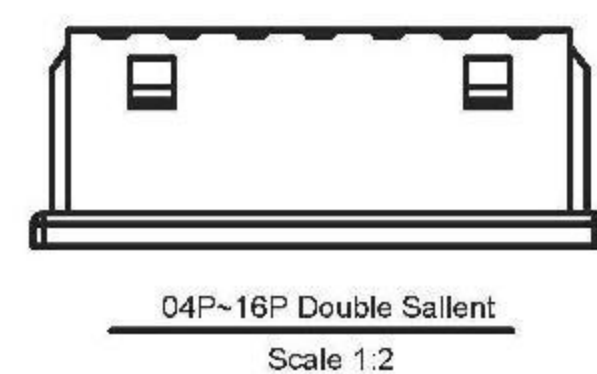
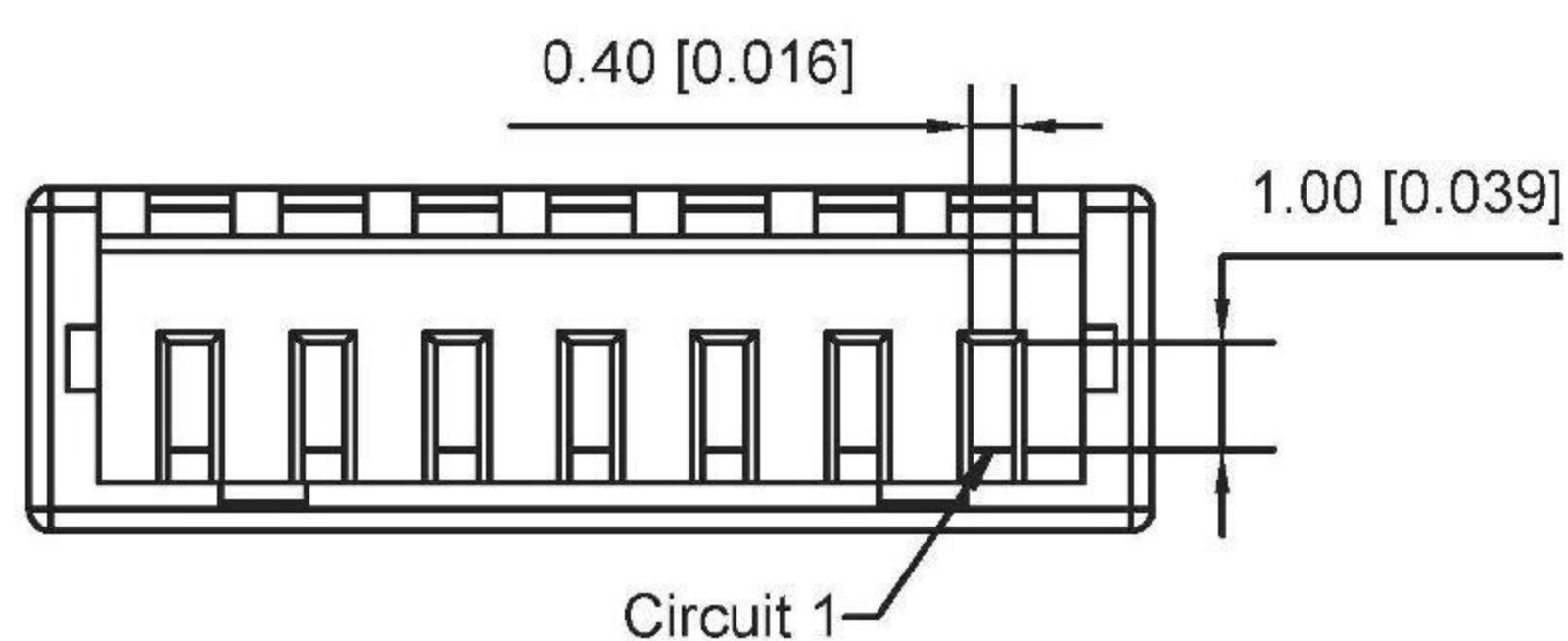


X9821 H M -XX A-XX HF

- ① Series No.
- ② Category : H-HSG
- ③ Welding Board Angle : M-male
- ④ Row No.-Pin No.: XX-02P~16P
- ⑤ Plug the Pin& Special No:A-No Gap
- ⑥ Material : N0-PA66 94V-0 ;PT-PBT 94V-0
- ⑦ HF-Halogen free



Poles	Dimensions(mm)				Poles	Dimensions(mm)			
	A	B	C	D		A	B	C	D
02	1.25	4.25	3.15		10	11.25	14.25	13.15	
03	2.50	5.50	4.40		11	12.50	15.50	14.40	
04	3.75	6.75	5.65		12	13.75	16.75	15.65	
05	5.00	8.00	6.90		13	15.00	18.00	16.90	
06	6.25	9.25	8.15		14	16.25	19.25	18.15	
07	7.50	10.50	9.40		15	17.50	20.50	19.40	
08	8.75	11.75	10.65		16	18.75	21.75	20.65	
09	10.00	13.00	11.90						



X9821HM-XXA-PT	PBT UL 94V-0	X9821TF	X9821W
X9821HM-XXA-NOHF	Nylon 66 UL 94V-0 Halogen-Free		
X9821HM-XXA-N0	Nylon 66 UL 94V-0		
PART NO	Material	Suitable Terminal	Suitable Terminal

REVISIONS				ANGLAR	±5°		DSND	SCALE: N/A	MODEL TYPE: BOARD TO BOARD CONNECTOR			
				L ≤ 4	±0.2		DWN	VIEW:	PART NO.:			
				4 < L ≤ 16	±0.3		CHKD	UNIT: mm/in	DWG NO.:			
				16 < L ≤ 63	±0.4		APPD	SIZE: A4				
	DATE	REVISED	APPROVED	L > 63	±0.5	DONG GUAN XI BANG ELECTRONIC CO., LTD			WEIGHT	SHEET	REVISION	
				UNSPECIFIED TOLERANCES							1/1	A0
www.alpsr.com www.gdxjdz.com www.xbswitch.com												