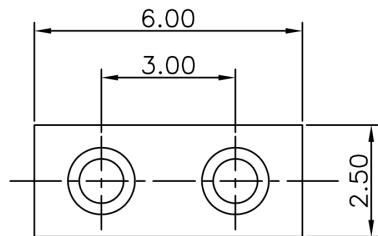
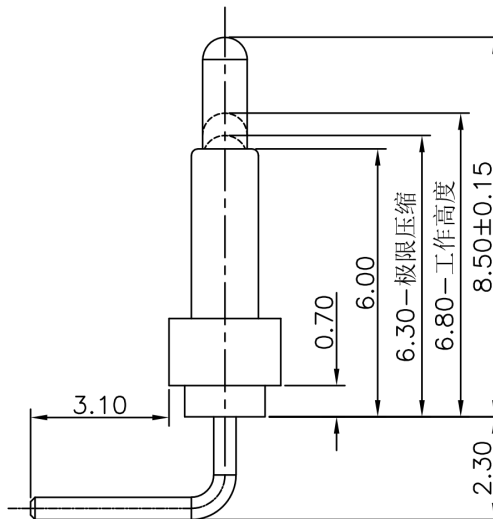


图为焊盘位置和大小



NOTE

- Material  
Plunger: Brass  
Barrel: Brass  
Spring: SUS  
Housing: PA46
- Plating  
Plunger: Au over NI  
Barrel: Au over NI
- Electrical  
Rated current & voltage: DC 12V; 2.0A Max.
- Mechanical  
Spring force: 60g±20% at normal working height  
Durability: 10,000 cycles(minimum)
- To ensure the best usage, please operate it based on the working height. Based on the engineering drawings, shall not exceed the maximum allowed compression
- To avoid arcing issue, The adaptor start to power supply after connector mated fully.



**东莞市溪榜电子有限公司**  
DONG GUAN XI BANG ELECTRONICS CO., LTD.

TOLERANCE UNLESS OTHERWISE STATED :

Up to 5 ±0.2  
Above 5 ~ 15 ±0.3  
Above 15 ~ 30 ±0.4  
Above 30 ~ 50 ±0.5  
Angle ±0.3

3RD. ANGEL'S



UNITS

MM

DRAWN BY:	DATE
Jack Lu	04/01/21
CHECKED BY:	DATE
Jacky Chen	04/01/21
APPROVED BY:	DATE
Tony Kao	04/01/21

MAT'L		TITLE	CONNECTOR
FINISH		MODLE	POGO PIN
SCALE	1 : 1	DWG NO.	XB-PGC-W-300-2P-L-G
SHEET NO.	1 of 1	PART NO.	Thimble Connector

ITEM NO.	DESCRIPTION	DRAWN	DATE
----------	-------------	-------	------

SIZE	A4
VER	R