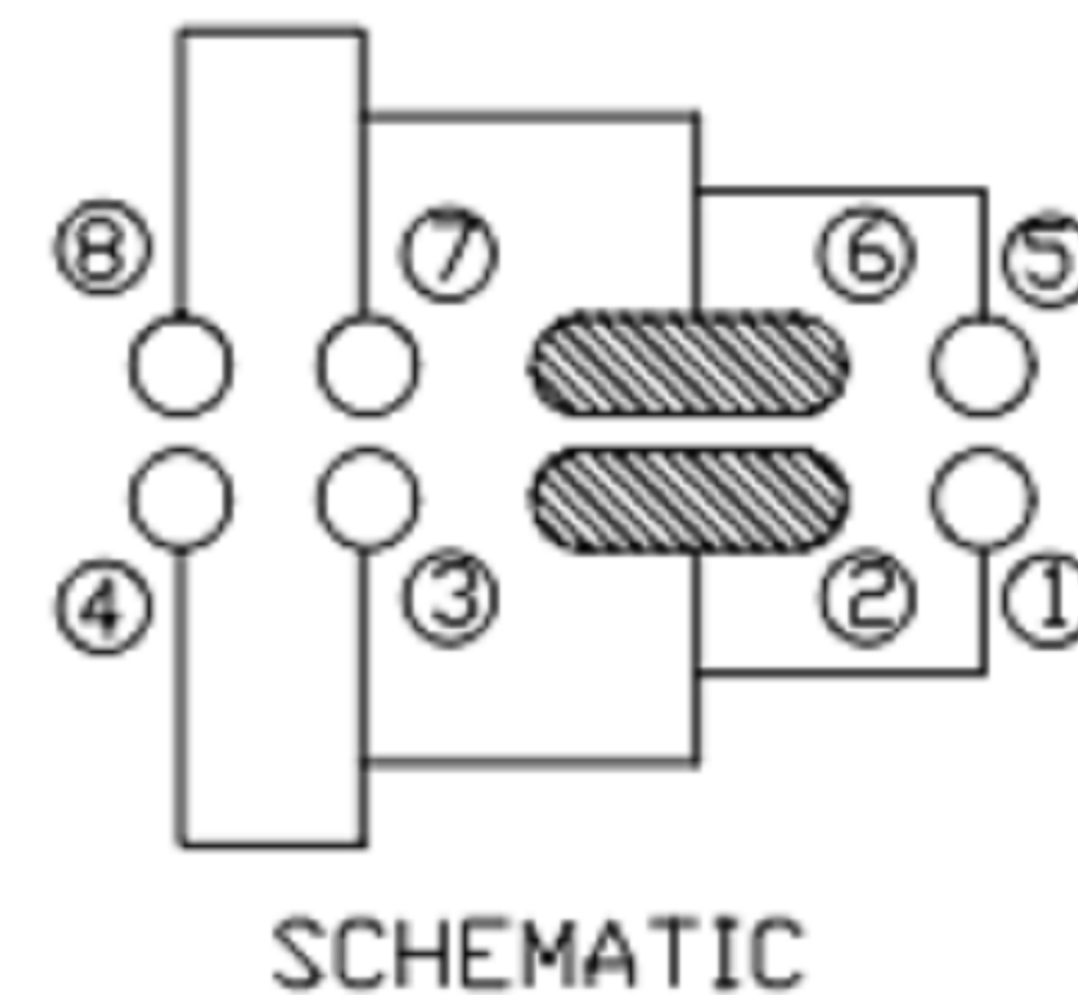
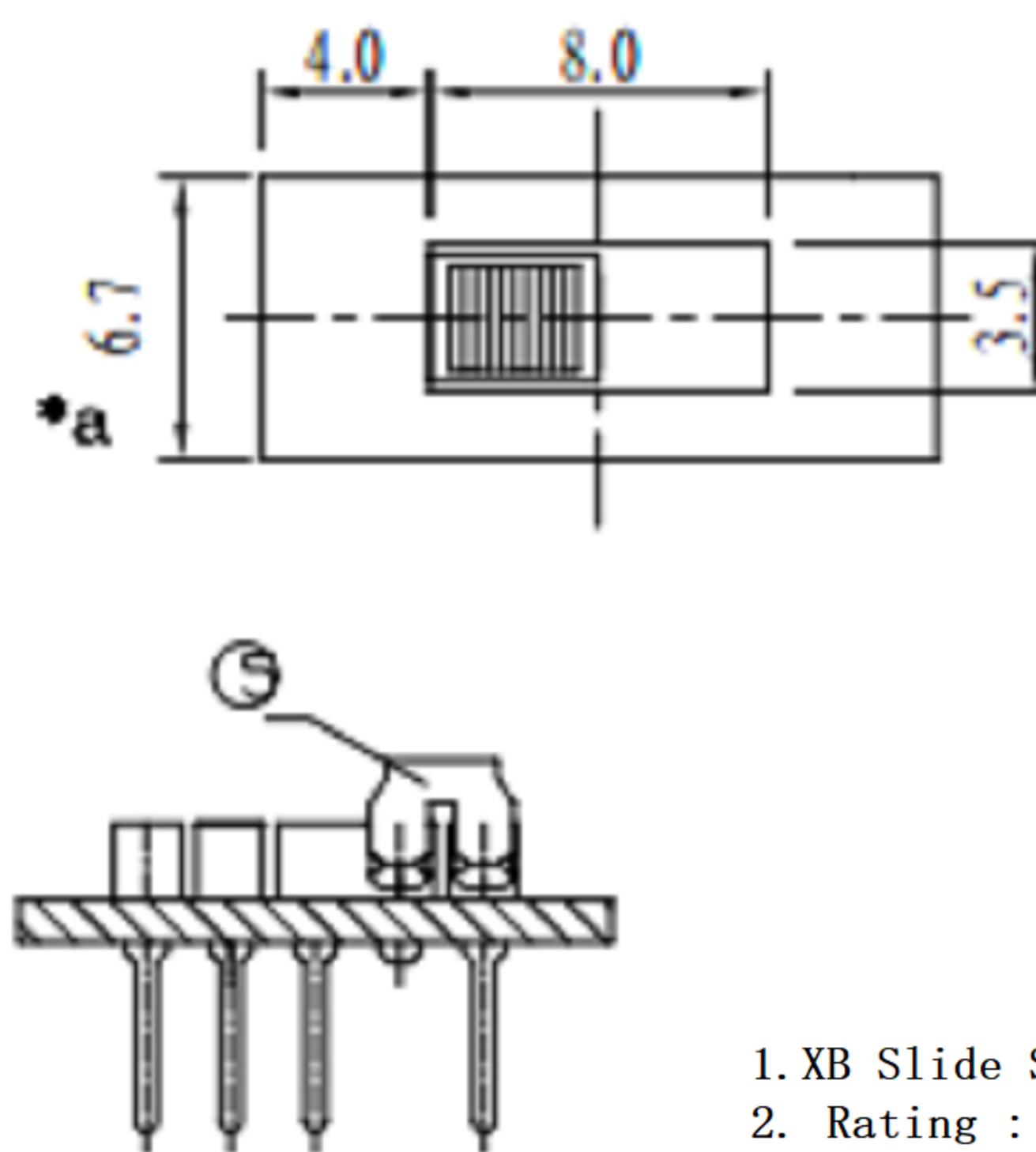
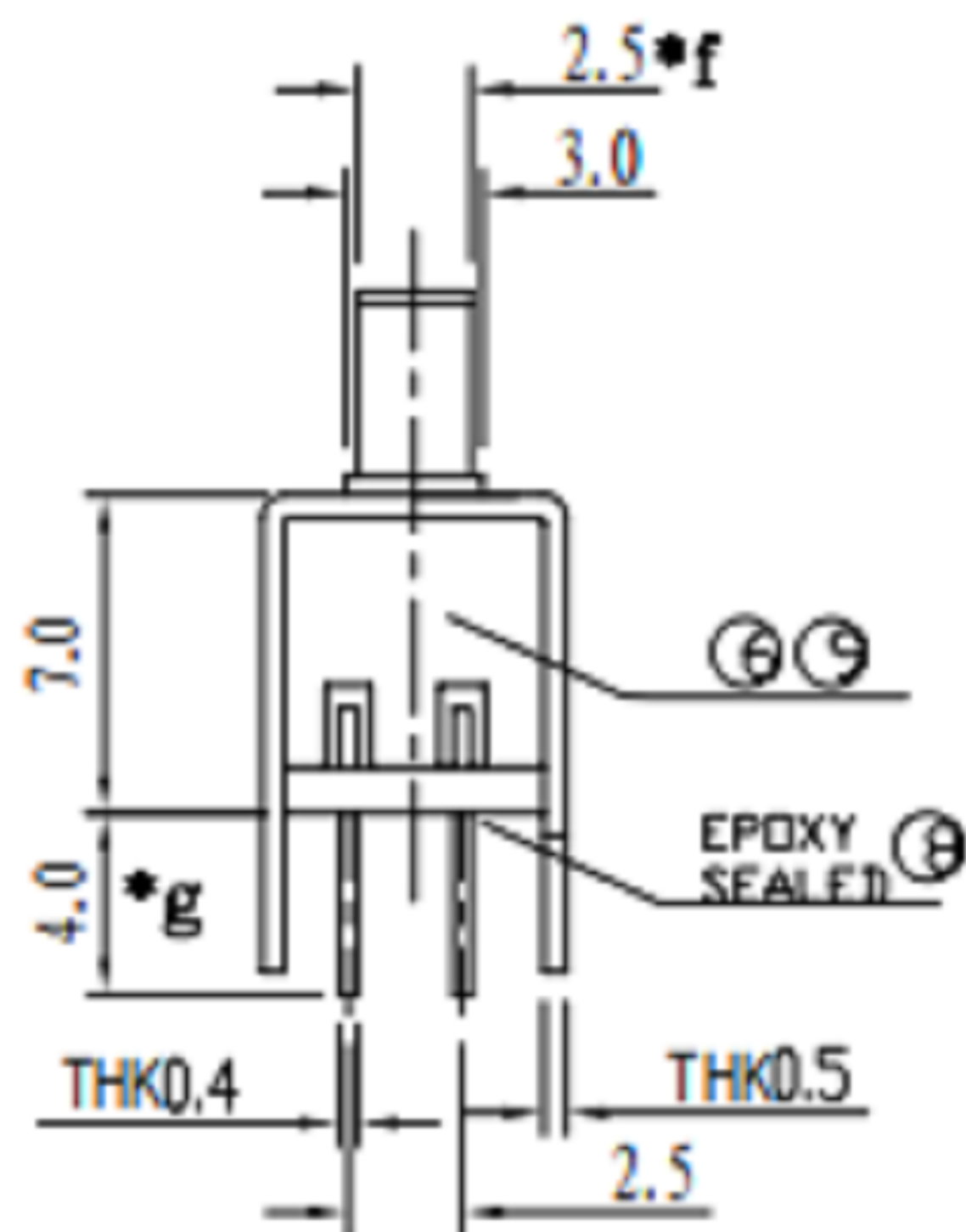
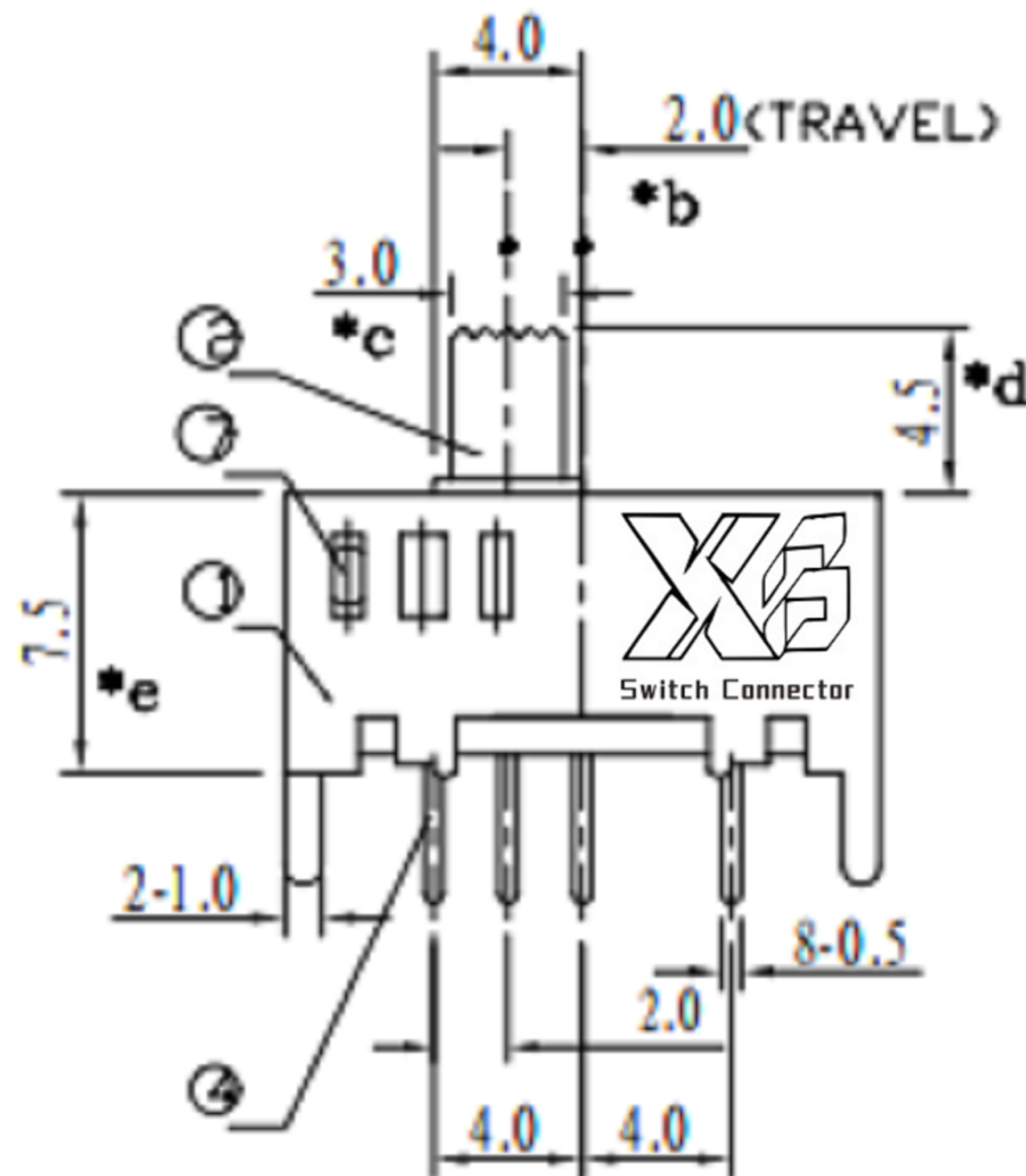


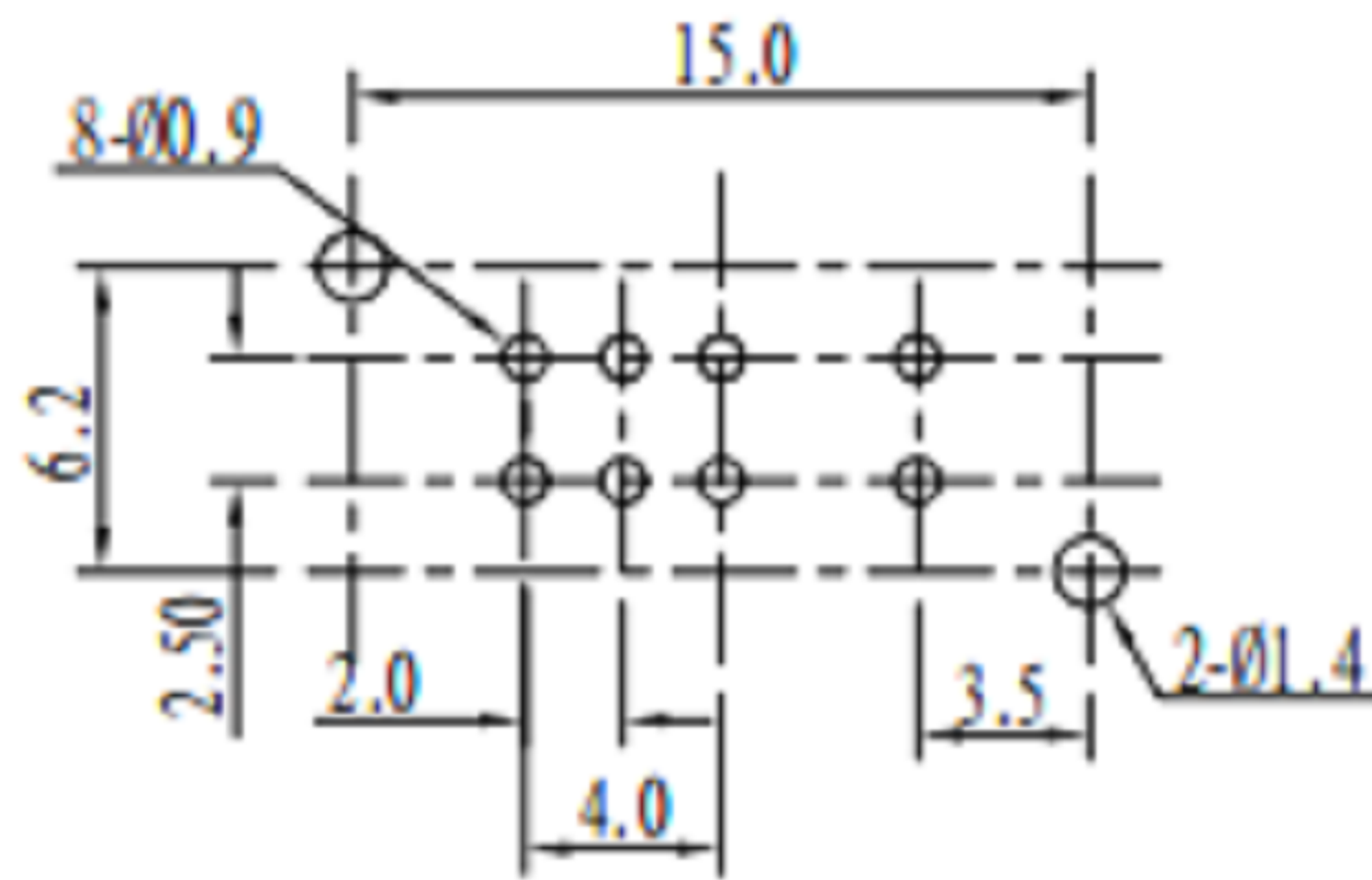
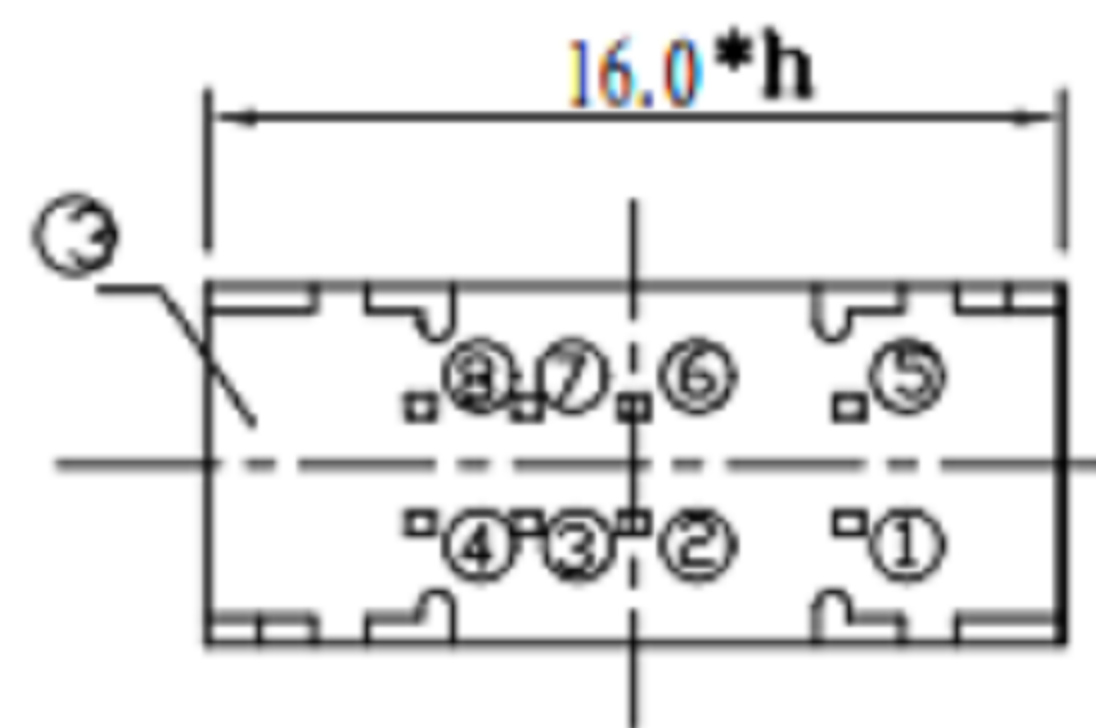
CAD FILE:

**ROHS**



1. XB Slide Switch electrical parameters
2. Rating : DC 12V 30V 0.3A 0.5A
3. Circuit : 2P3T
4. Operating gear:3rd gear
5. Travel : 2.0mm
6. Operating Force : T1-2 : 250±100gf  
T2-3 : 250±100gf
7. Contact resistance: 30M Ω
8. Withstand voltage: 500V AC for 1 minute
9. Handle length: 2.0-10mm
10. Terminal : P.C. Board Terminal

- Instructions for bolt inspection:
1. The dimensions marked with \* are mandatory for CTQ inspection.
  2. The material must meet environmental requirements.
  3. Note that the rubber head is parked on the right side.



PIERCING PLAN

注：帶"\*"的為重點尺寸共8處

8					TOLERANCE				
7					UNLESS SPECIFIED				
6					WITHIN 1.5mm : ±0.1mm	A	2012-9-25	初版	ZENQ. CHEN
5					OVER 1.5mm : ±0.2mm	ISSUE	DATE	DESCRIPTIONS OF REVISION	APPD.
4	CONTACT	SUS	1	Ag CLAD	TITLE : <b>SLide Switch</b>			UNIT : mm	DRWG NO.: XB-SK-23D34
3	CASE	PPA/BRASS SRTIP	1	BLACK/Ag PLATED	MODEL: XB-SK-23D34			SCALE: 5:1	DWN. JUN. YANG 2012-9-25
2	COVER	STEEL STRIP	1	Ni PLATED	<b>东莞市溪榜电子有限公司</b> DONG GUAN XI BANG ELECTRONI CS CO., LTD.			CHK'D	DONG. PANG 2012-9-25
1	KNOB	PPA	1	BLACK				APPD.	ZENQ. CHEN 2012-9-25
NO.	PARTS	MATERIALS	Q'TY	FINISH					