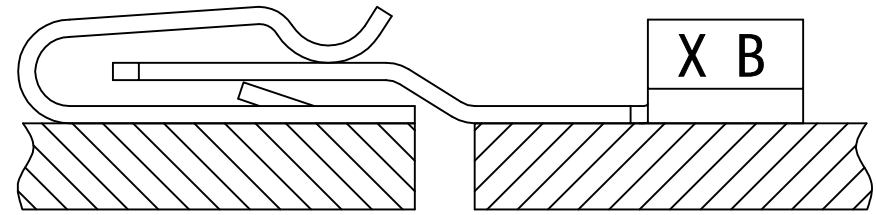
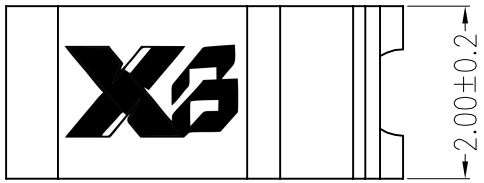
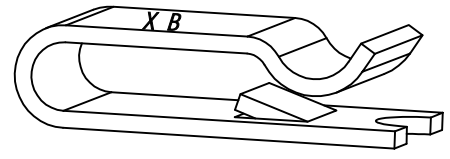
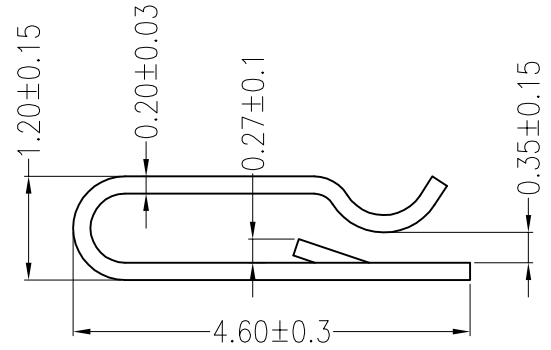


REV	DESCRIPTION	DESIGN	DATE
A0	Release	吴丹平	2016.04.30



### Assembly Layout



### 主要技术参数 Main Specifications

- 线数 (Poles): 01
- 接触电阻 (Contact resistance):  $\leq 20\text{m}\Omega$
- 绝缘电阻 (Insulation resistance):  $\geq 800\text{M}\Omega$
- 额定电压 (Rated voltage): 250 V AC DC
- 额定电流 (Rated current): 3.0A AC DC
- 耐电压 (Withstand Voltage): 1500V AC/minute
- 温度范围 (Temperature Range):  $-45^{\circ}\text{C} \sim +125^{\circ}\text{C}$

### ORDER INFORMATION:

**XB-L059B-01-T2CB-R**

PART No. \_\_\_\_\_

No. FOR CIRCUITS: \_\_\_\_\_

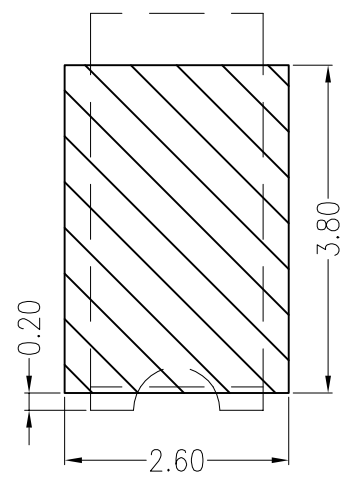
01

PLASTIC MATERIAL: \_\_\_\_\_

T2C=PBR (BEIGE)

PACKAGING: R=REEL

PLATING: B=MATTE Sn



### Board Layout

General Tolerance:  $\pm 0.05$

ITEM	COMPONENT	Q'TY	MATERIAL	FINISH
A	CONTACT	1 PCS	PhosphorBronze	MATTE Sn-plated

东莞市溪榜电子有限公司 <small>Switch Connector DONG GUAN XI BANG ELECTRONICS CO., LTD</small>		TITLE: -	
X.±0.5	X.±5'	USE:	PART NO.:
.X±0.3	.X±2'	CUSTOMER	L059B-01-T2CB-R
.XX±0.25	.XX±1'	APPD: 邵敬和	DWG NO.:
--	--	CHKD: 田峰	
		DR: 蒋建银	SCALE: 1 : 1
UNITS: mm			SHEET: 1 / 1