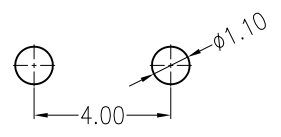
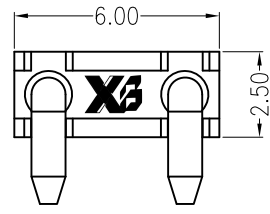
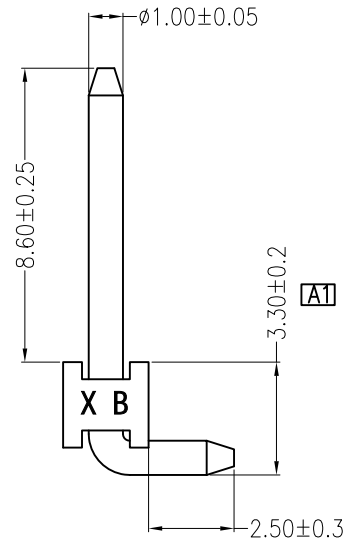
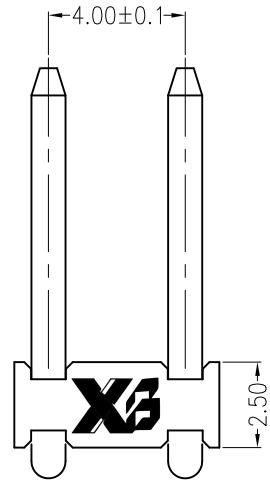
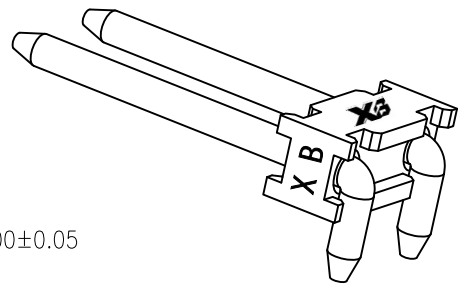


REV	DESCRIPTION	DESIGN	DATE
A0	NEW RELEASE	李润	2016/03/28
A1	按当前机台可管控精度更改公差	Jiangjanyin	2019/08/17

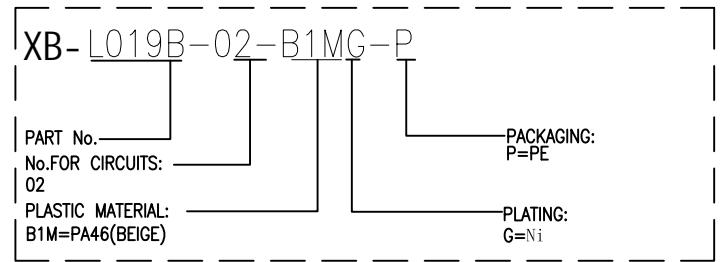


SUGGESTED PCB LAYOUT
(COMPONENT SIDE)

Specifications:

- Poles: 02
- Contact resistance: $\leq 20m\Omega$
- Insulation resistance: $\geq 1000M\Omega$
- Rated voltage: 250V AC DC
- Rated current: 2.0A AC DC
- Withstand Voltage: 2000V AC/minute
- Temperature Range: $-40^{\circ}C \sim +110^{\circ}C$
- Housing: PA46 UL94V-0, Natural (Beige)
- Contacts: Brass/Ni-plated

ORDER INFORMATION:



东莞市溪榜电子有限公司 <small>Switch Connector DONG GUAN XI BANG ELECTRONICS CO., LTD</small>		TITLE: -	
GENERAL TOLERANCE		USE: CUSTOMER	PART NO.:
X. ±0.50	X. ±5°	APPD: Liuzhenling	L019B-02-B1MG-P
X.X ±0.30	X.X ±2°	CHKD: Wangliang	DWG NO.:
X.XX ±0.20	X.XX ±1°	DR: Jiangjanyin	GCKH-0255
	UNITS: mm	SCALE 1 : 1	SHEET 1 / 1