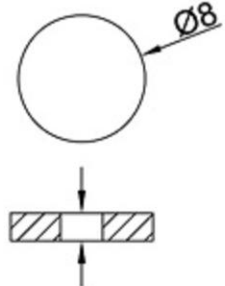


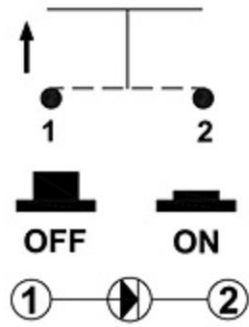
ROHS

PANEL MOUNTING



6.5mm MAX.

FUNCTION



SPECIFICATIONS

Circuit	:SPST
Current rating	:0.5A
Voltage rating	:250VAC
Dielectric withstanding voltage	:1000VAC for 1 minute
Contact resistance	:50mΩ Max
Insulation resistance	:100MΩ Min
Travel	:2.0mm±0.5mm
Operating Force	:600±200gf
Mechanical Life	:Over 100,000 cycles
Electrical Life	:Over 50,000 cycles
Manual Welding	:350°C for 3 seconds
Function	:OFF-(ON)
Operating temperature	:-20°C ~ +85°C
Level of Protection	: IP65

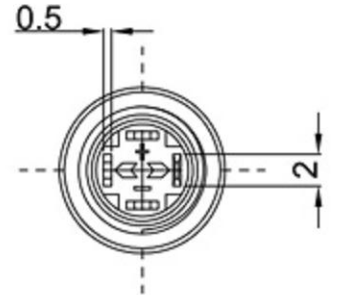
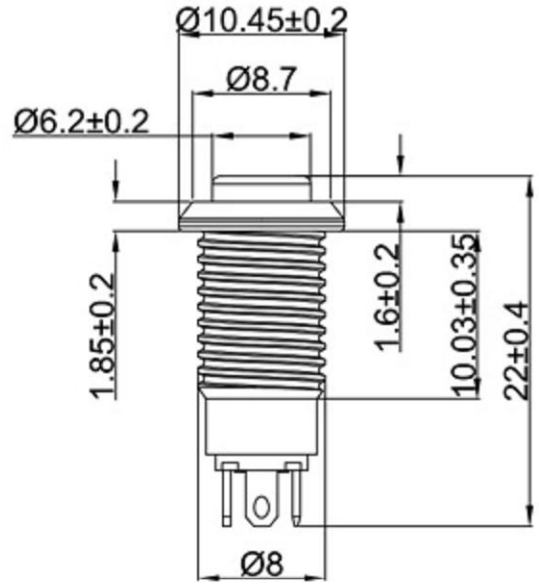
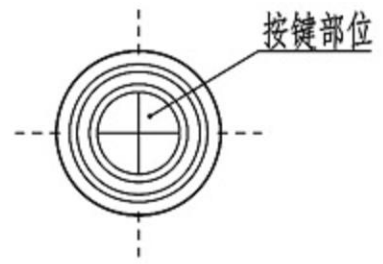
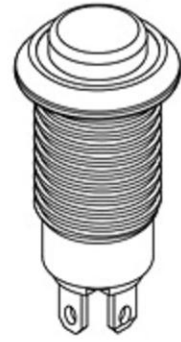
MATERIAL:

Base: SUS;
 Cap: SUS;
 Terminal: Copper, Golden plated ;
 Nut: Brass, NI Plated .

W6	白色	5.0	6.0	9.0	15
U6	蓝色	5.0	6.0	9.0	15
G6	纯绿色	5.0	6.0	9.0	15
Y6	黄色	5.0	6.0	9.0	15
R6	红色	5.0	6.0	9.0	15
W3	白色	2.8	3.0	3.4	15

LED Specifications

LED 类型	双向LED灯珠 (交直流通用)			U3	蓝色	2.8	3.0	3.4	15
寿命	40000小时 (参考值)			G3	纯绿色	2.8	3.0	3.4	15
额定电压	AC/DC12V	AC/DC24V	AC/DC110V	Y2	黄色	1.8	2.0	2.4	15
	AC/DC36V	AC/DC48V	AC/DC220V	R2	红色	1.8	2.0	2.4	15
额定电流	约15mA		约3mA	灯发光颜色 X Emitted color X	最小	一般	最大	额定 电流 (mA)	
降压方式	采用3V灯, 需内置电阻				顺向电压(V)				



MATERIAL:
 Actuator: SUS ;
 Top Base: SUS;
 Bottom Base: PA66+GF ;
 Terminal: Brass, Silver plated ;
 Nut: Brass, Ni plated .

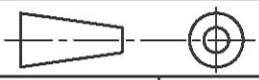
The material contained in this drawing is the property of XiBang. Any use other than that specifically authorized by XiBang is prohibited. The above drawing is subjected to change for improvement without prior notice.



东莞市溪榜电子有限公司
 DONG GUAN XI BANG ELECTRONICS CO., LTD

TITLE : METAL PUSH BUTTON SWITCH

MODEL : XB-PBM8-Z-H-RR3-S0



TOLERANCE
 <=1.5mm±0.1
 > 1.5mm±0.2
 >=10mm±0.3

ANGLE
 ±2°

UNIT : MM	DWN.	ZENQ. CHEN	DATE
SCALE : 3 : 1	CHK'D	PENG. GAO	DATE
VERSION	01	APPD.	FEI. LONG. HE

7	SPRING	STEEL WIRE	1	NATURE
6	STEEL BALL	STEEL	1	NATURE
5	BOARD	PHENOLIC RESIN	1	NATURE
4	CONTACT CLIP	PBS STRIP	2	Ag PLATED
3	FRAME	IRON STRIP	1	Ni PLATED
2	TERMINAL	BRASS STRIP	8	Ag PLATED
1	KNOB	POM	1	BLACK
NO.	PART NAME	MATERIAL	QTY.	FINISHING