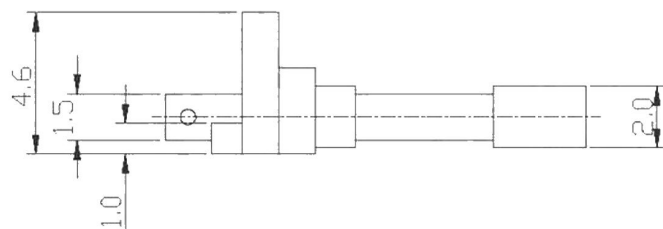
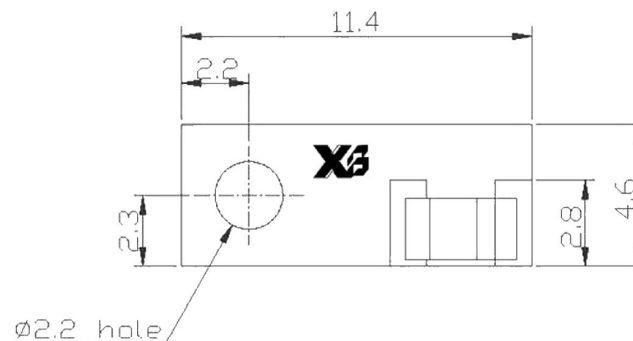


Technical drawing of a mechanical part, likely a bracket or support, showing dimensions in millimeters. The drawing includes a side view and a top view. Key dimensions are:

- Overall height: 11.4
- Overall width: 10.0
- Top flange width: 6.5
- Top flange thickness: 1.2
- Top flange hole diameter: 1.5
- Top flange hole offset from left edge: 2.3
- Top flange hole offset from right edge: 3.0
- Top flange hole diameter: 1.2



1. Blade switch
2. Base: POM/PA66
3. Terminal: Phosphorus copper
4. Contact point: Purple copper
5. Electroplating: Silver/Gold Plating
6. Temperature range for use:  $-10\text{ }^{\circ}\text{C} \pm 60\text{ }^{\circ}\text{C}$
7. Current and voltage: 0.5A 12V DC
8. Operating force:  $30\text{GF} \pm 10\text{GF}$
9. Voltage withstand: 500V 0.5mA/min
10. Insulation resistance:  $100\text{M } \Omega$
11. Contact resistance:  $30\text{M } \Omega$
12. Lifetime: 50000 times



**东莞市溪榜电子有限公司**  
DONG GUAN XI BANG ELECTRONICS CO., LTD

TITLE : LEAF SWITCH

MODEL : LF-042



UNIT : MM

DWN.

DATE \_\_\_\_\_

## TOLERANCE

ANGLE TOL

SCALE : 4 : 1

CHK' D

DATE \_\_\_\_\_

 $\leq 1.5\text{mm} \pm 0.1$  $\pm 2$ 

VERSION

APPD.

DATE \_\_\_\_\_

$$> 1.5\text{mm} \pm 0.2$$
 $\pm 2$ 

NO.

[illegible]

## MATERIAL

QTY.	DESCRIPTION	UNIT PRICE	TOTAL
1	1000	1000	1000
2	2000	2000	2000
3	3000	3000	3000
4	4000	4000	4000
5	5000	5000	5000
6	6000	6000	6000
7	7000	7000	7000
8	8000	8000	8000
9	9000	9000	9000
10	10000	10000	10000

## FINISHING