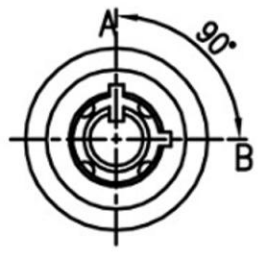


Unit: mm



Recommended hole size

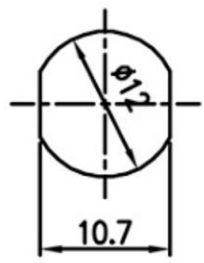


Fig.1

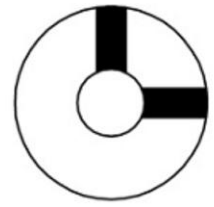


Fig.2

Mechanical key switch

Brass housing and cylinder.
Bright chrome plated standard.
4 pin tumbler mechanism.
Steel made tubular keys, nickel plated.
Cam is affixed by screw.
Hex nut mounted.

Fig No	Lock Number	Positions	Key Pulls	Turn
1	C175-1	2	1	90°
2	C175-2	2	2	90°

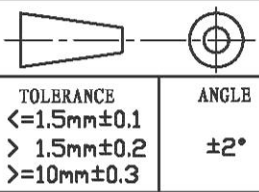
The material contained in this drawing is the property of XiBang. Any use other than that specifically authorized by XiBang is prohibited. The above drawing is subjected to change for improvement without prior notice.



东莞市溪榜电子有限公司
DONG GUAN XI BANG ELECTRONICS CO., LTD

TITLE : XB KEY SWITCH ELECTRONIC LOCK
MODEL : XB-C-175

UNIT : MM	DWN.	ZENQ. CHEN	DATE
SCALE : 3 : 1	CHK'D	PENG. GAO	DATE
VERSION : 01	APPD.	FEI. LONG. HE	DATE



NO.	PART NAME	MATERIAL	QTY	FINISHING
7	SPRING	STEEL WIRE	1	NATURE
6	STEEL BALL	STEEL	1	NATURE
5	BOARD	PHENOLIC RESIN	1	NATURE
4	CONTACT CLIP	PBS STRIP	2	Ag PLATED
3	FRAME	IRON STRIP	1	Ni PLATED
2	TERMINAL	BRASS STRIP	8	Ag PLATED
1	KNOB	POM	1	BLACK