

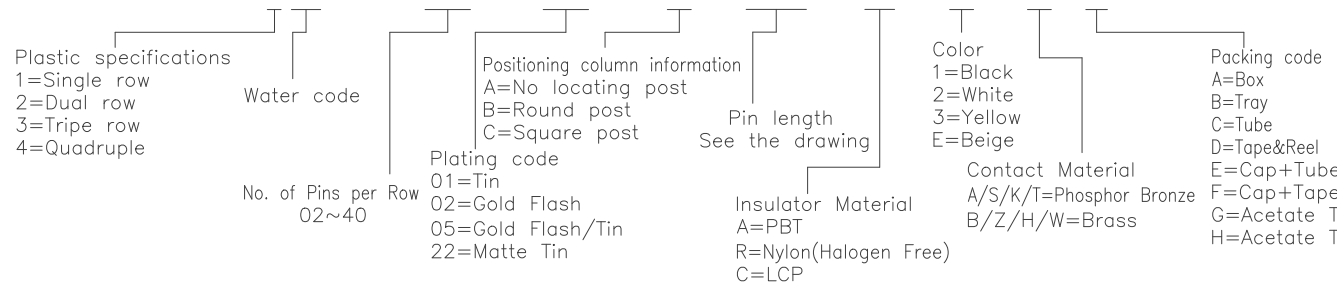
Specifications
 Current Rating:1.0Amp
 Insulation Resistance:1000MΩMin.
 Dielectric Withstanding Voltage:300VAC
 Contact Resistance:20mΩMax.
 Operating Temperature:-40°C to +105°C
 Materials
 Contact Material:Phosphor Bronze
 Insulator Material:High Temperature Thermoplastic, UL 94V-0 LCP or the equivalent material
 All materials must meet Greenconn hazardous substances control standards.

Dim.E	NOTE
3.00mm	02~04Pins
5.00mm	05~40Pins

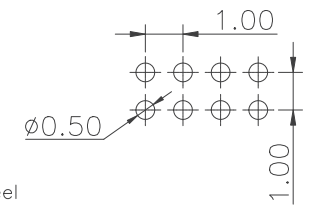
No. of PIN/ROW	Dimension Information	
	M	L
02	1.00	2.00
03	2.00	3.00
04	3.00	4.00
05	4.00	5.00
06	5.00	6.00
07	6.00	7.00
08	7.00	8.00
09	8.00	9.00
10	9.00	10.00
11	10.00	11.00
12	11.00	12.00
13	12.00	13.00
14	13.00	14.00
15	14.00	15.00
16	15.00	16.00
17	16.00	17.00
18	17.00	18.00
19	18.00	19.00
20	19.00	20.00
21	20.00	21.00
22	21.00	22.00
23	22.00	23.00
24	23.00	24.00
25	24.00	25.00
26	25.00	26.00
27	26.00	27.00
28	27.00	28.00
29	28.00	29.00
30	29.00	30.00
31	30.00	31.00
32	31.00	32.00
33	32.00	33.00
34	33.00	34.00
35	34.00	35.00
36	35.00	36.00
37	36.00	37.00
38	37.00	38.00
39	38.00	39.00
40	39.00	40.00

Ordering Information

XB-PZ-A-10-203



Recommended P.C.Board Layout
 (Tolerance:±0.05)



东莞市溪榜电子有限公司
 DONG GUAN XI BANG ELECTRONICS CO., LTD.
 Switch Connector

REV. 01	UNIT. mm	SCALE. 5:1	PAGE. 1/1
---------	----------	------------	-----------

GENERAL TOLERANCE	
X.*±5.0°	X.±0.30
.X*±3.0°	.X±0.25
.XX*±2.0°	.XX±0.15
.XXX*±1.0°	.XXX±0.10

DWG. NO.
XB-PZ-A-10-203

PART NO.
XB-PZ-A-10-203

TITLE.
 1.00 PIN HEADER
 DUAL ROWS DIP TYPE
 CONNECTOR

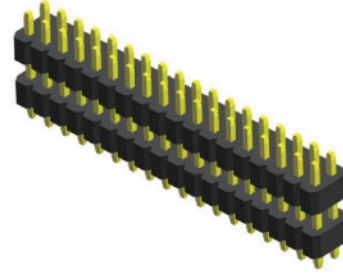
Specifications

Current Rating : 1.0 Ampere
 Insulation Resistance : 1000 MΩ Min
 Dielectric Withstanding : 300V AC
 Contact Resistance : 20 mΩ Max
 Operating Temperature : -40°C to +105°C

Materials

Contact Material : Phosphor Bronze
 Insulation Material : High Temperature Thermoplastic, 94V-0 LCP

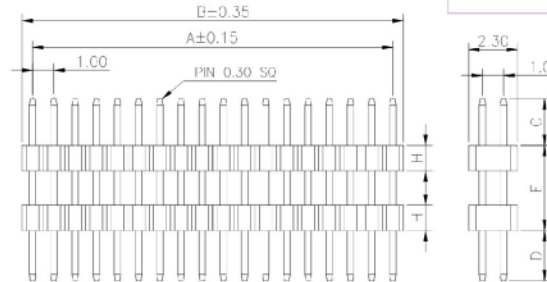
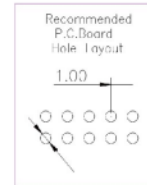
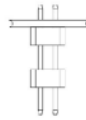
All materials must meet Greenncon's requirements for environmental protection.



Mating with



B20



* For Coded Dimension Not Inside The Table, Please Refer To "Ordering Information"

No. of Pins/Row	Dimension Information			No. of Pins/Row	Dimension Information			No. of Pins/Row	Dimension Information			No. of Pins/Row	Dimension Information		
	A	B			A	B			A	B			A	B	
02	1.00	2.00		11	10.00	11.00		21	20.00	21.00		31	30.00	31.00	
03	2.00	3.00		12	11.00	12.00		22	21.00	22.00		32	31.00	32.00	
04	3.00	4.00		13	12.00	13.00		23	22.00	23.00		33	32.00	33.00	
05	4.00	5.00		14	13.00	14.00		24	23.00	24.00		34	33.00	34.00	
06	5.00	6.00		15	14.00	15.00		25	24.00	25.00		35	34.00	35.00	
07	6.00	7.00		16	15.00	16.00		26	25.00	26.00		36	35.00	36.00	
08	7.00	8.00		17	16.00	17.00		27	26.00	27.00		37	36.00	37.00	
09	8.00	9.00		18	17.00	18.00		28	27.00	28.00		38	37.00	38.00	
10	9.00	10.00		19	18.00	19.00		29	28.00	29.00		39	38.00	39.00	
				20	19.00	20.00		30	29.00	30.00		40	39.00	40.00	

东莞市溪榜电子有限公司
 DONG GUAN XI BANG ELECTRONICS CO., LTD.

REV. 01 UNIT. mm SCALE. 5:1 PAGE. 1/1

GENERAL TOLERANCE		DESIGN:	DATE:	DWG. NO.	TITLE: 2.00 FEMALE HEADER SINGLE ROW DIP TYPE BASE 4.30H
X.±5.0'	X.±0.30	CHECKED:	DATE:	XB-PZ-A-10-203	
.X'±3.0'	.X±0.25	AUD TED:	DATE:	PART NO.	
.XX'±2.0'	.XX±0.15	APPROVED:	DATE:	XB-PZ-A-10-203	
.XXX'±1.0'	.XXX±0.10				