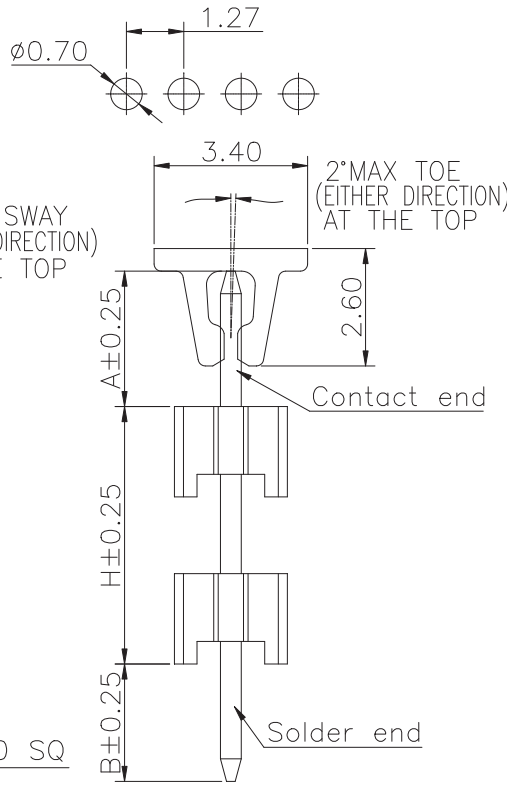
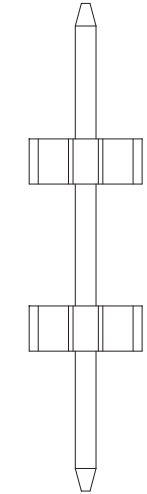


Recommended P.C.Board Layout  
(Tolerance:±0.05)



Specifications  
 Current Rating:1.0Amp  
 Insulation Resistance:1000MΩMin.  
 Dielectric Withstanding Voltage:300VAC  
 Contact Resistance:20mΩMax.  
 Operating Temperature:-40°C to +105°C  
 Materials  
 Contact Material:Brass  
 Insulator Material:High Temperature Thermoplastic, UL 94V-0 LCP or the equivalent material  
 All materials must meet Greenconn hazardous substances control standards.



No. of PIN/ROW	Dimension Information	
	L	M
02	2.54	1.27
03	3.81	2.54
04	5.08	3.81
05	6.35	5.08
06	7.62	6.35
07	8.89	7.62
08	10.16	8.89
09	11.43	10.16
10	12.70	11.43
11	13.97	12.70
12	15.24	13.97
13	16.51	15.24
14	17.78	16.51
15	19.05	17.78
16	20.32	19.05
17	21.59	20.32
18	22.86	21.59
19	24.13	22.86
20	25.40	24.13
21	26.67	25.40
22	27.94	26.67
23	29.21	27.94
24	30.48	29.21
25	31.75	30.48
26	33.02	31.75
27	34.29	33.02
28	35.56	34.29
29	36.83	35.56
30	38.10	36.83
31	39.37	38.10
32	40.64	39.37
33	41.91	40.64

### Ordering Information

**XB-PZ-A-127-135**

- Plastic specifications
  - 1=Single row
  - 2=Dual row
  - 3=Tripe row
  - 4=Quadruple
- Water code
  - 31:H1=2.54
  - 32:H1=1.00
  - 33:H1=1.50
  - 35:H1=2.00
- No. of Pins per Row
  - 02~33
- Positioning column information
  - A=No locating post
  - B=Round post
  - C=Square post
- Plating code
  - 01=Tin
  - 02=Gold Flash
  - 05=Gold Flash/Tin
  - 22=Matte Tin
- Insulator Material
  - A=PBT
  - R=Nylon(Halogen Free)
  - C=LCP
- Pin length
  - See the drawing
- Color
  - 1=Black
  - 2=White
  - 3=Yellow
  - E=Beige
- Contact Material
  - A/S/K/T=Phosphor Bronze
  - B/Z/H/W=Brass
- Packing code
  - A=Box
  - B=Tray
  - C=Tube
  - D=Tape&Reel
  - E=Cap+Tube
  - F=Cap+Tape&Reel
  - G=Acetate Tape+Tube
  - H=Acetate Tape+Tape&Reel

GPEA131/133/135  
have Stand-off

GPEA132  
No Stand-off

**东莞市溪榜电子有限公司**  
 DONG GUAN XI BANG ELECTRONICS CO., LTD.  
 Switch Connector

REV. A    UNIT. mm    SCALE. 6:1    PAGE. 1/1

GENERAL TOLERANCE	
X.*±5.0°	X.±0.30
.X.*±3.0°	.X.±0.25
.XX.*±2.0°	.XX±0.15
.XXX.*±1.0°	.XXX±0.10

DWG. NO.  
**XB-PZ-A-127-135**

PART NO.  
**XB-PZ-A-127-135**

TITLE.  
**1.27 PIN HEADER  
SINGLE ROW DIP TYPE  
CONNECTOR**

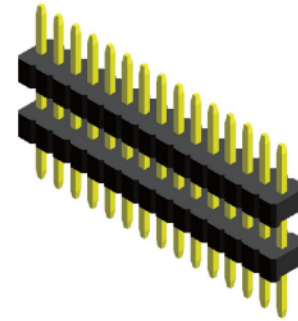
### Specifications

Current Rating : 1.0 Ampere  
 Insulation Resistance : 1000 MΩ Min  
 Dielectric Withstanding : 300V AC  
 Contact Resistance : 20 mΩ Max  
 Operating Temperature : -40°C to +105°C

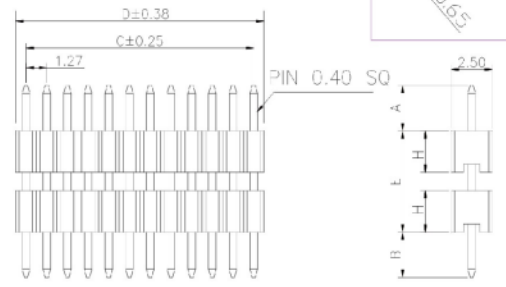
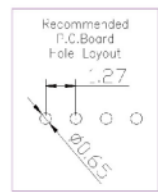
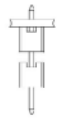
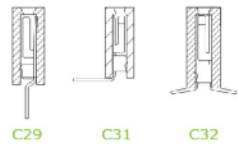
### Materials

Contact Material : Brass  
 Insulation Material : High Temperature Thermoplastic, 94V-0 LCP

All materials must meet Greenconn's requirements for environmental protection.



### Mating with



\* For Coded Dimension Not Inside The Table, Please Refer To "Ordering Information"

No. of Pins/Row	Dimension Information		No. of Pins/Row	Dimension Information		No. of Pins/Row	Dimension Information		No. of Pins/Row	Dimension Information	
	C	D		C	D		C	D		C	D
01		1.27	14	16.51	17.78	27	33.02	34.29	40	49.53	50.80
02	1.27	2.54	15	17.78	19.05	28	34.29	35.56	41	50.80	52.07
03	2.54	3.81	16	19.05	20.32	29	35.56	36.83	42	52.07	53.34
04	3.81	5.08	17	20.32	21.59	30	36.83	38.10	43	53.34	54.61
05	5.08	6.35	18	21.59	22.86	31	38.10	39.37	44	54.61	55.88
06	6.35	7.62	19	22.86	24.13	32	39.37	40.64	45	55.88	57.15
07	7.62	8.89	20	24.13	25.40	33	40.64	41.91	46	57.15	57.42
08	8.89	10.16	21	25.40	26.67	34	41.91	43.18	47	57.42	59.69
09	10.16	11.43	22	26.67	27.94	35	43.18	44.45	48	59.69	60.96
10	11.43	12.70	23	27.94	29.21	36	44.45	45.72	49	60.96	62.23
11	12.70	13.97	24	29.21	30.48	37	45.72	46.99	50	62.23	63.50
12	13.97	15.24	25	30.48	31.75	38	46.99	48.26			
13	15.24	16.51	26	31.75	33.02	39	48.26	49.53			

**XB** 东莞市溪榜电子有限公司  
 DONG GUAN XI BANG ELECTRONICS CO., LTD.

REV. 01 UNIT. mm SCALE. 5:1 PAGE. 1/1

GENERAL TOLERANCE	
X.*±5.0'	X.±0.30
.X'±3.0'	.X±0.25
.XX'±2.0'	.XX±0.15
.XXX'±1.0'	.XXX±0.10

DESIGN:	DATE:
CHECKED:	DATE:
AUDITED:	DATE:
APPROVED:	DATE:

DWG. NO. XB-PZ-A-127-135  
 PART NO. XB-PZ-A-127-135

TITLE. 2.00 FEMALE HEADER SINGLE ROW DIP TYPE BASE 4.30H