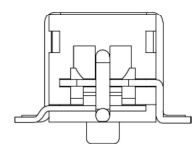
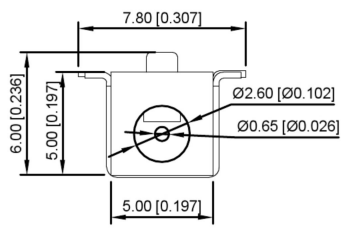
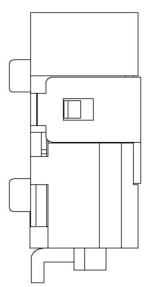
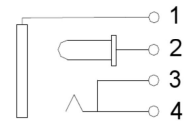
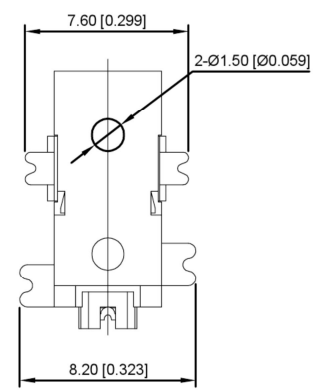
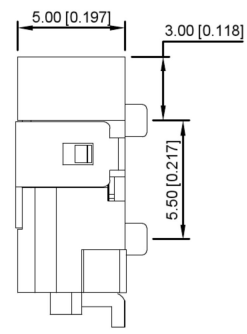
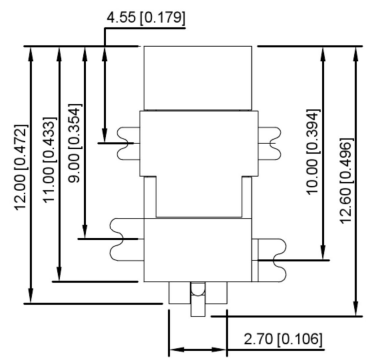


### Main technical performance

Voltage rating	DC 30V\0.5A
Contact resistance	≤0.03Ω
Insulation resistance	≥100MΩ
Withstanding voltage	AC500V(50Hz)/min
Insertion force	3-20N
Temperature range	-30-70℃
Life	5000次



SCHEMATIC	
Model	DC-011C-SMT
Center Pin	Ø0.65 mm




	MATERIAL	PLATING
center pin	Brass	tin
terminal 1	Brass	ni
terminal 2	Brass	tin
terminal 3	Brass	ag
terminal 4	Phosphor Bronze	ag
plastic	PPA	

REVISIONS	DATE	REVISED	APPROVED	UNSPECIFIED TOLERANCES
				ANGULAR ±5°
				L ≤ 4 ±0.2
				4 < L ≤ 16 ±0.3
				16 < L ≤ 63 ±0.4
				L > 63 ±0.5

www.alpsr.com www.gdxjdz.com www.xbswitch.com



DSND	SCALE: N/A	MODEL TYPE: DC POWER JACK
DWN	VIEW: 	PART NO.: DC-011C-SMT
CHKD	UNIT: mm/in	DWG NO.:
APPD	SIZE: A4	
		WEIGHT
		SHEET
		REVISION
		1/1
		A0

DONG GUAN XI BANG ELECTRONIC CO., LTD